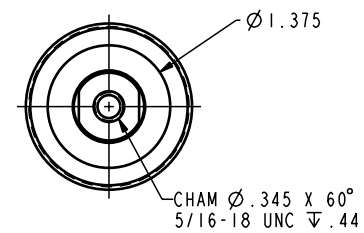
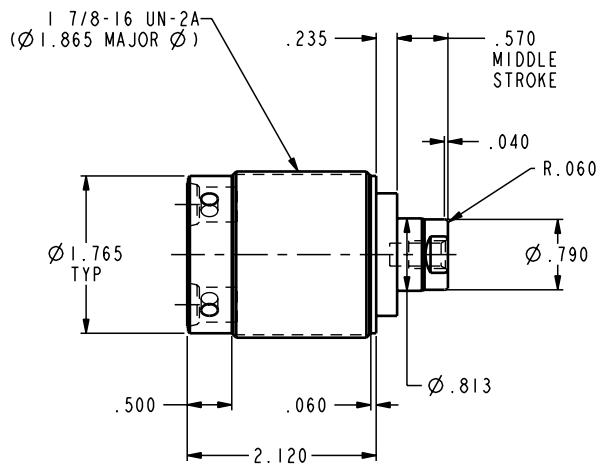
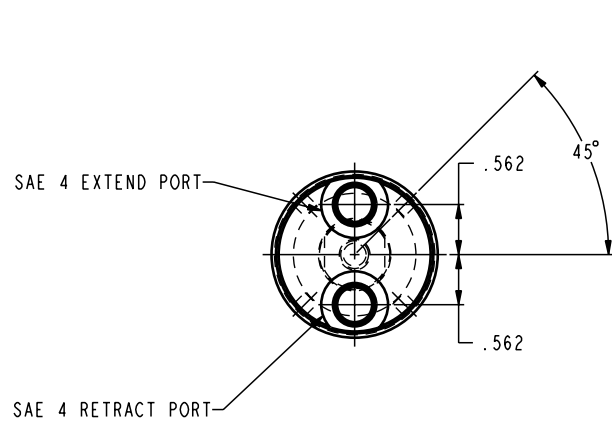


ILC20021000 REV A ECN 704



CAD CONTROL DRAWING



VEKTEK, INC.  
1334 E. SIXTH AVE. P.O. BOX 625  
EMPORIA, KS. 66801 U.S.A.

A	704	RELEASE	K. ROEMER	03-29-05	20021000	G	CYL, TB, DA, .5 STRK, 3900
REV	IN ACCORDANCE WITH ECN	EFFECTIVE DATE	REVISED BY	DATE	REFERENCE MODEL	REF REV	
DRW BY:	K. ROEMER	DRAWING STATUS: <b>Released</b>			TOLERANCES DO NOT APPLY DIMENSIONS ARE NOMINAL		SIZE D
DATE:	08-19-02	PRODUCTION APPROVED FOR RELEASED STATUS ONLY			ILC20021000		REV A

FORM FEG036, Rev. A

SHEET 1 OF 1