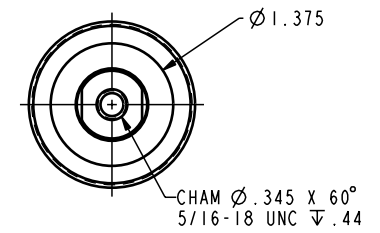
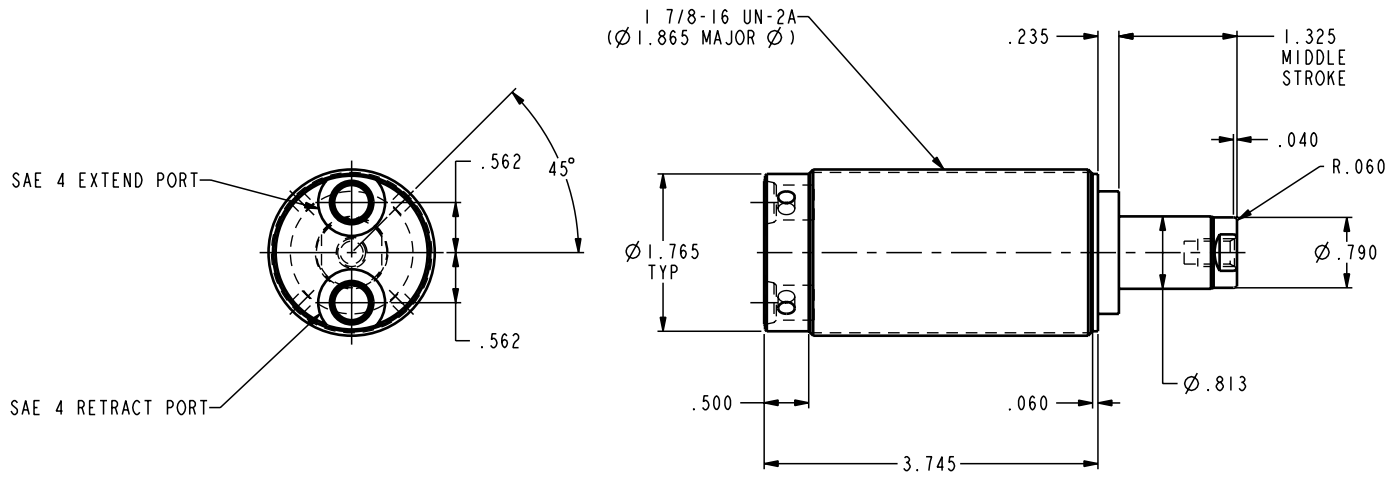


ILC20021002 REV A ECN 704



CAD CONTROL DRAWING



VEKTEK, INC.
 1334 E. SIXTH AVE. P.O. BOX 625
 EMPORIA, KS. 66801 U.S.A.

A	704	RELEASE	K. ROEMER	03-29-05	20021002	F	CYL, TB, DA, 2.0 STRK, 3900
REV	IN ACCORDANCE WITH ECN	EFFECTIVE DATE	REVISED BY	DATE	REFERENCE MODEL	REF REV	
DRW BY:	K. ROEMER	DRAWING STATUS: Released			TOLERANCES DO NOT APPLY DIMENSIONS ARE NOMINAL		SIZE D
DATE:	08-19-02	PRODUCTION APPROVED FOR RELEASED STATUS ONLY			REV A		ILC20021002

FORM FEG036, Rev. A

SHEET 1 OF 1