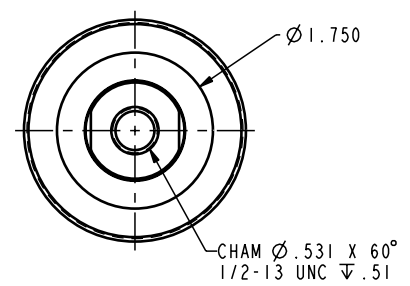
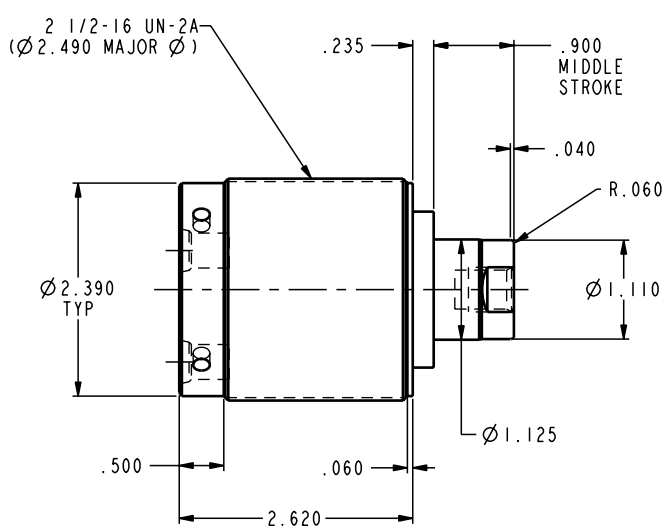
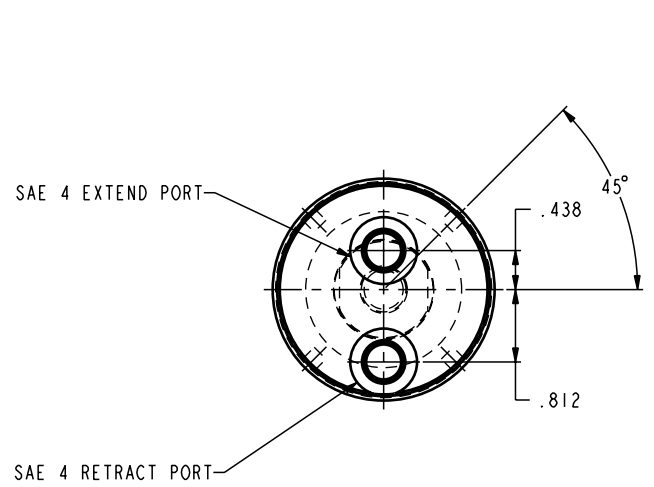


ILC20021501 REV A ECN 704



CAD CONTROL DRAWING



VEKTEK, INC.  
1334 E. SIXTH AVE. P.O. BOX 625  
EMPORIA, KS. 66801 U.S.A.

REV	A	704	RELEASE	K. ROEMER	03-29-05	20021501	G	CYL, TB, DA, 1.0 STRK, 8800
REV	IN ACCORDANCE WITH ECN		EFFECTIVE DATE	REVISED BY	DATE	REFERENCE MODEL	REF REV	
DRW BY:	K. ROEMER		DRAWING STATUS: <b>Released</b>			TOLERANCES DO NOT APPLY		SIZE
DATE:	08-19-02		PRODUCTION APPROVED FOR RELEASED STATUS ONLY			DIMENSIONS ARE NOMINAL		D ILC20021501

FORM FEG036, Rev. A