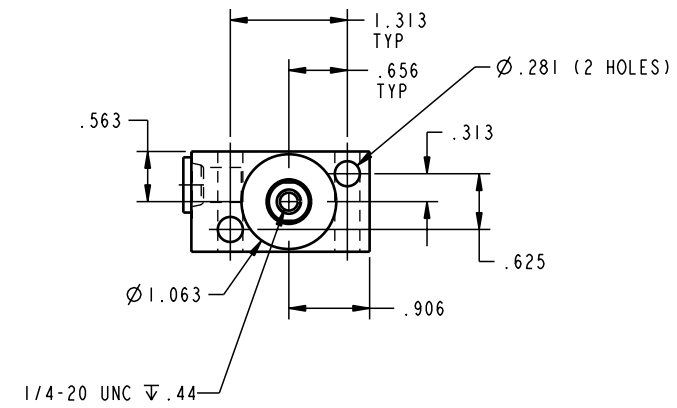
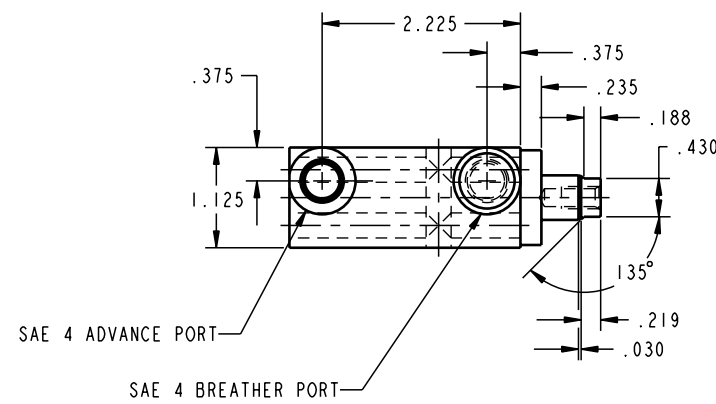
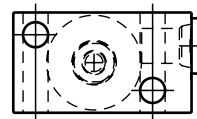
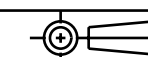


ILC20110801 REV A ECN 642  
SCALE 1.000



CAD CONTROL  
DRAWING



VEKTEK, INC.  
1334 E. SIXTH AVE. P.O. BOX 625  
EMPORIA, KS. 66801 U.S.A.

A	642	RELEASE	K. ROEMER	04-01-05	20110801	F	CYL, BB, SA, 2200, .75 STRK
REV	IN ACCORDANCE WITH ECN	EFFECTIVE DATE	REVISED BY	DATE	REFERENCE MODEL	REF REV	
DRW BY:	K. ROEMER			DRAWING STATUS: <b>Released</b>			
DATE:	04-03-02			PRODUCTION APPROVED FOR RELEASED STATUS ONLY			

TOLERANCES DO NOT APPLY  
DIMENSIONS ARE NOMINAL

SIZE D ILC20110801 REV A

FORM FEG036, Rev. A

SHEET 1 OF 1