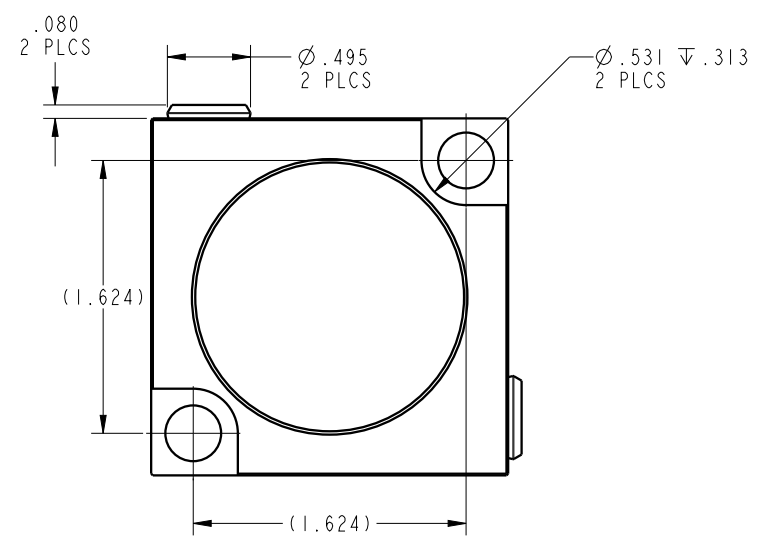
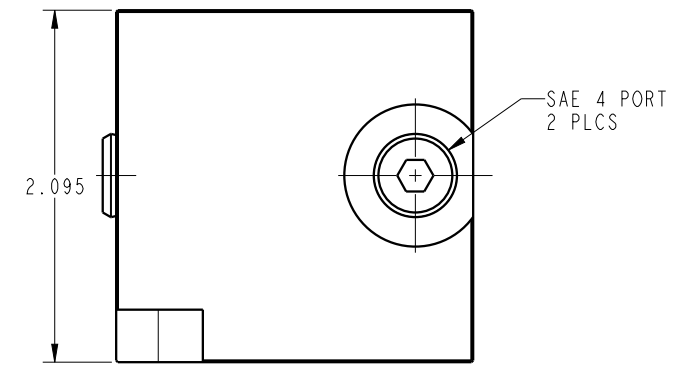
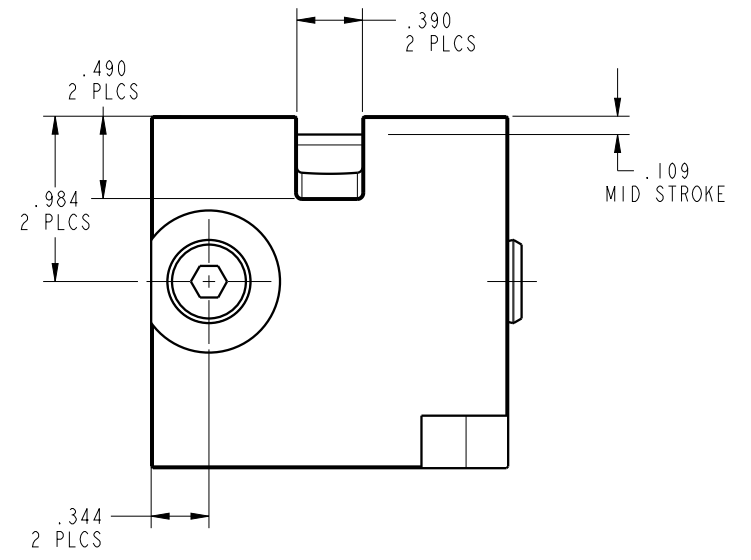



ILC20111301 REV A ECN 3539



<b>CAD CONTROL DRAWING</b>				 VEKTEK, INC. 1334 E. SIXTH AVE. P.O. BOX 625 EMPORIA, KS. 66801 U.S.A.			
A	3539	RELEASE	MJUST	7/30/18	20111301	A	CYL, BB, PULL, 5200LB
REV	IN ACCORDANCE WITH ECN	EFFECTIVE DATE	REVISED BY	DATE	REFERENCE MODEL	REF REV	1/2-13 THREAD
DRW BY:	MJUST	<b>DRAWING STATUS: Released</b>			TOLERANCES DO NOT APPLY DIMENSIONS ARE NOMINAL		SIZE B
DATE:	7/24/18	PRODUCTION APPROVED FOR RELEASED STATUS ONLY			ILC20111301		REV A
							FORM FEG036, Rev. B