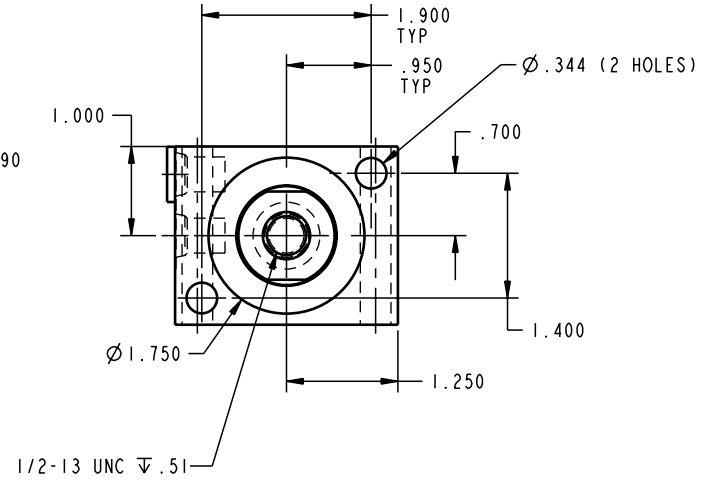
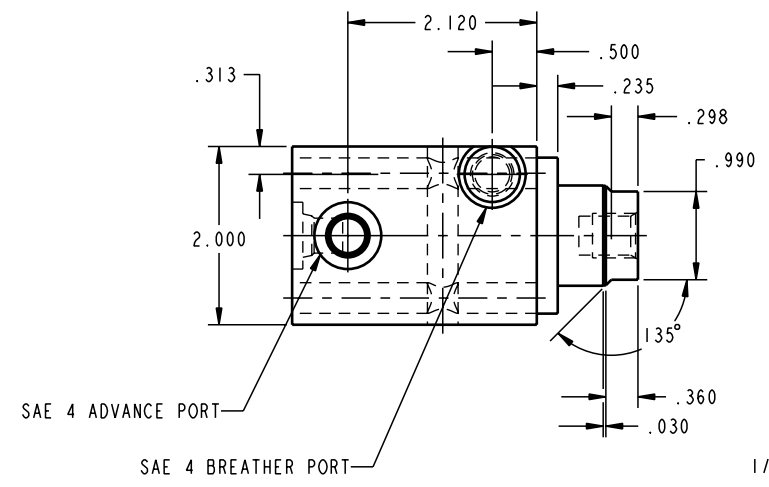
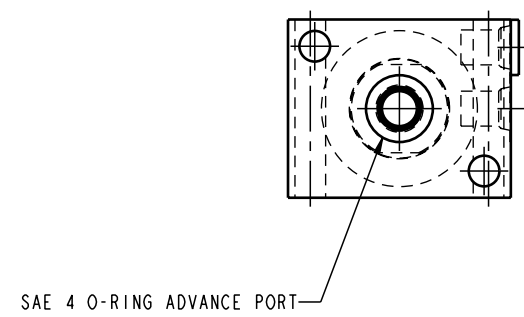


ILC20111501 REV A ECN 642
SCALE 1.000



CAD CONTROL
DRAWING



VEKTEK, INC.
1334 E. SIXTH AVE. P.O. BOX 625
EMPORIA, KS. 66801 U.S.A.

A	642	RELEASE	K. ROEMER	04-01-05	20111501	E	CYL, BB, SA, 8800, I. O STRK
REV	IN ACCORDANCE WITH ECN	EFFECTIVE DATE	REVISED BY	DATE	REFERENCE MODEL	REF REV	
DRW BY:	DRAWING STATUS: Released				TOLERANCES DO NOT APPLY		SIZE
DATE:	PRODUCTION APPROVED FOR RELEASED STATUS ONLY				DIMENSIONS ARE NOMINAL		D ILC20111501 REV A

FORM FEG036, Rev. A