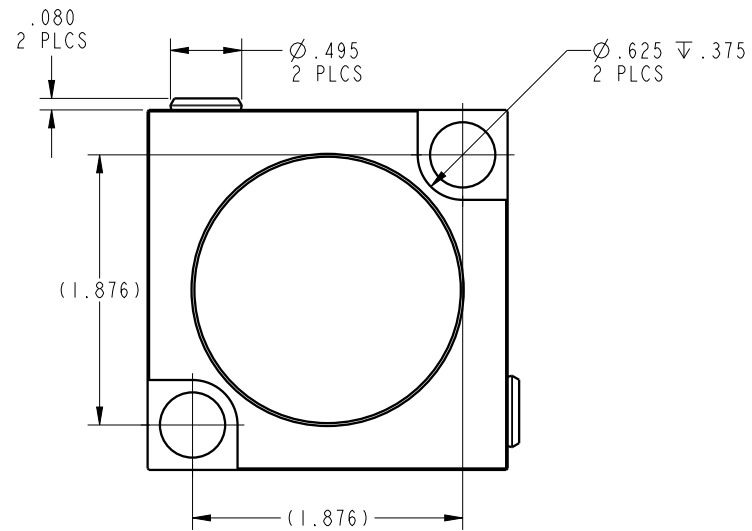
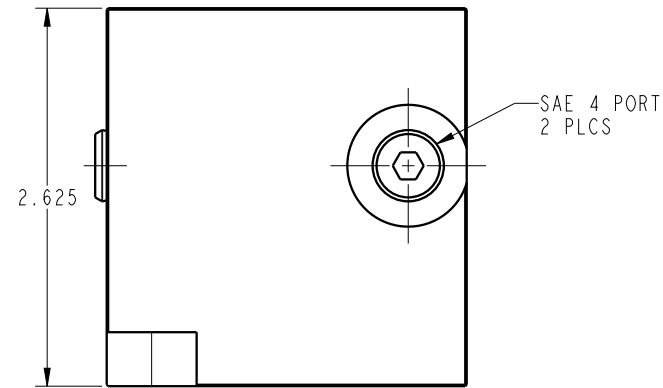
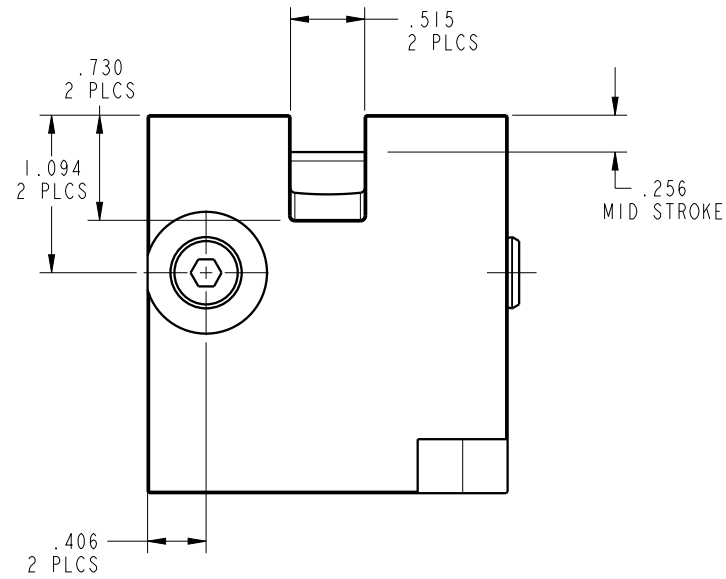


ILC20111600 REV A ECN 3539



CAD CONTROL DRAWING



VEKTEK, INC.
1334 E. SIXTH AVE. P.O. BOX 625
EMPORIA, KS. 66801 U.S.A.

A	3539	RELEASE	MJUST	7/30/18	20111600	A	CYL, BB, PULL, 9000LB
REV	IN ACCORDANCE WITH ECN	EFFECTIVE DATE	REVISED BY	DATE	REFERENCE MODEL	REF REV	1/2-13 THREAD
DRW BY:	MJUST	DRAWING STATUS: Released			TOLERANCES DO NOT APPLY DIMENSIONS ARE NOMINAL		SIZE B
DATE:	7/24/18	PRODUCTION APPROVED FOR RELEASED STATUS ONLY			ILC20111600		REV A

FORM FEG036, Rev. B

SHEET 1 OF 1