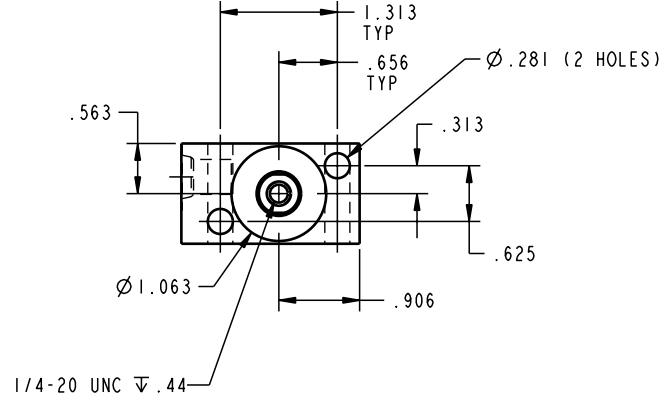
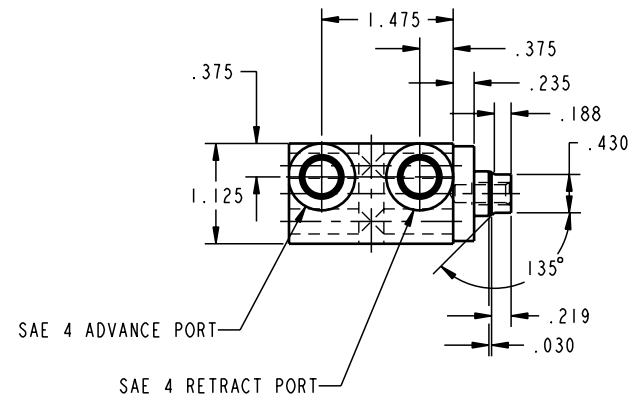
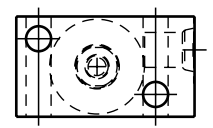


ILC20120800 REV A ECN 642
SCALE 1.000



CAD CONTROL
DRAWING



VEKTEK, INC.
1334 E. SIXTH AVE. P.O. BOX 625
EMPORIA, KS. 66801 U.S.A.

| | | | | | | | |
|---------|------------------------|----------------|------------|--|-----------------|---------|-----------------------------|
| A | 642 | RELEASE | K. ROEMER | 04-01-05 | 20120800 | F | CYL, BB, DA, 2200, .25 STRK |
| REV | IN ACCORDANCE WITH ECN | EFFECTIVE DATE | REVISED BY | DATE | REFERENCE MODEL | REF REV | |
| DRW BY: | K. ROEMER | | | DRAWING STATUS: Released | | | |
| DATE: | 04-03-02 | | | PRODUCTION APPROVED FOR RELEASED STATUS ONLY | | | |

TOLERANCES DO NOT APPLY
DIMENSIONS ARE NOMINAL

SIZE
D ILC20120800 REV
A

FORM FEG036, Rev. A

SHEET 1 OF 1