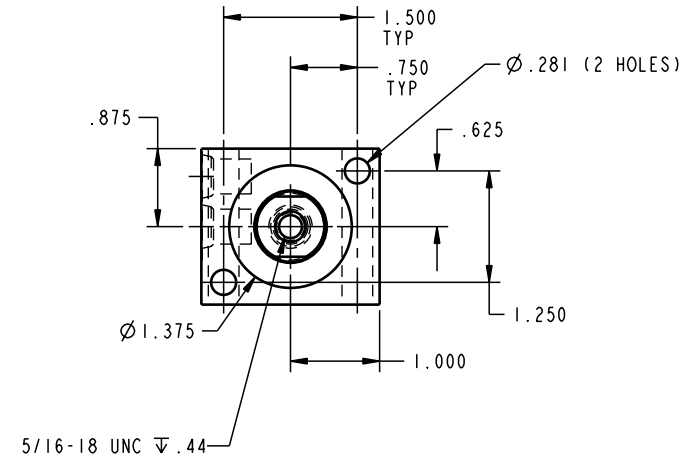
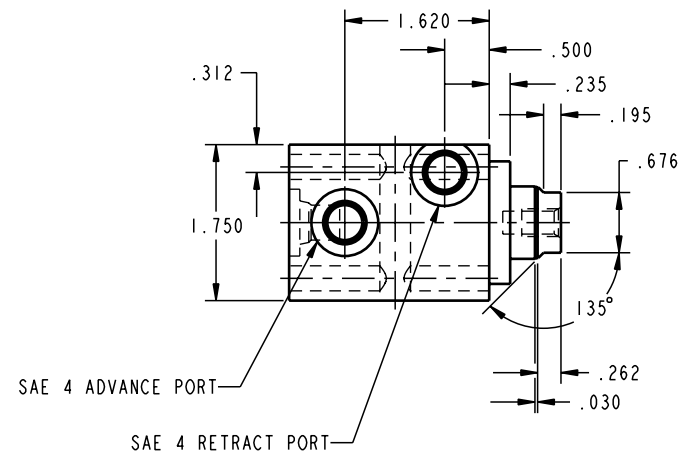
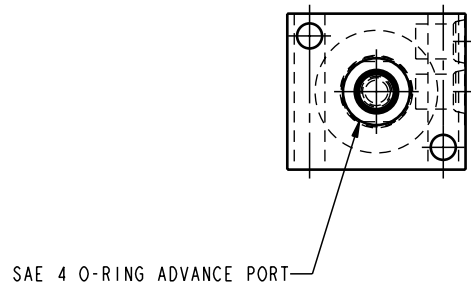


ILC20121000 REV A ECN 642
SCALE 1.000



CAD CONTROL
DRAWING



VEKTEK, INC.
1334 E. SIXTH AVE. P.O. BOX 625
EMPORIA, KS. 66801 U.S.A.

A	642	RELEASE	K. ROEMER	04-01-05	20121000	G	CYL, BB, DA, 3900, .50 STRK
REV	IN ACCORDANCE WITH ECN	EFFECTIVE DATE	REVISED BY	DATE	REFERENCE MODEL	REF REV	
DRW BY:	K. ROEMER				TOLERANCES DO NOT APPLY		SIZE
DATE:	04-03-02				DIMENSIONS ARE NOMINAL		D
DRAWING STATUS: Released					ILC20121000		REV
PRODUCTION APPROVED FOR RELEASED STATUS ONLY					FORM FEG036, Rev. A		A

SHEET 1 OF 1