

1

2

3

4

D

D

C

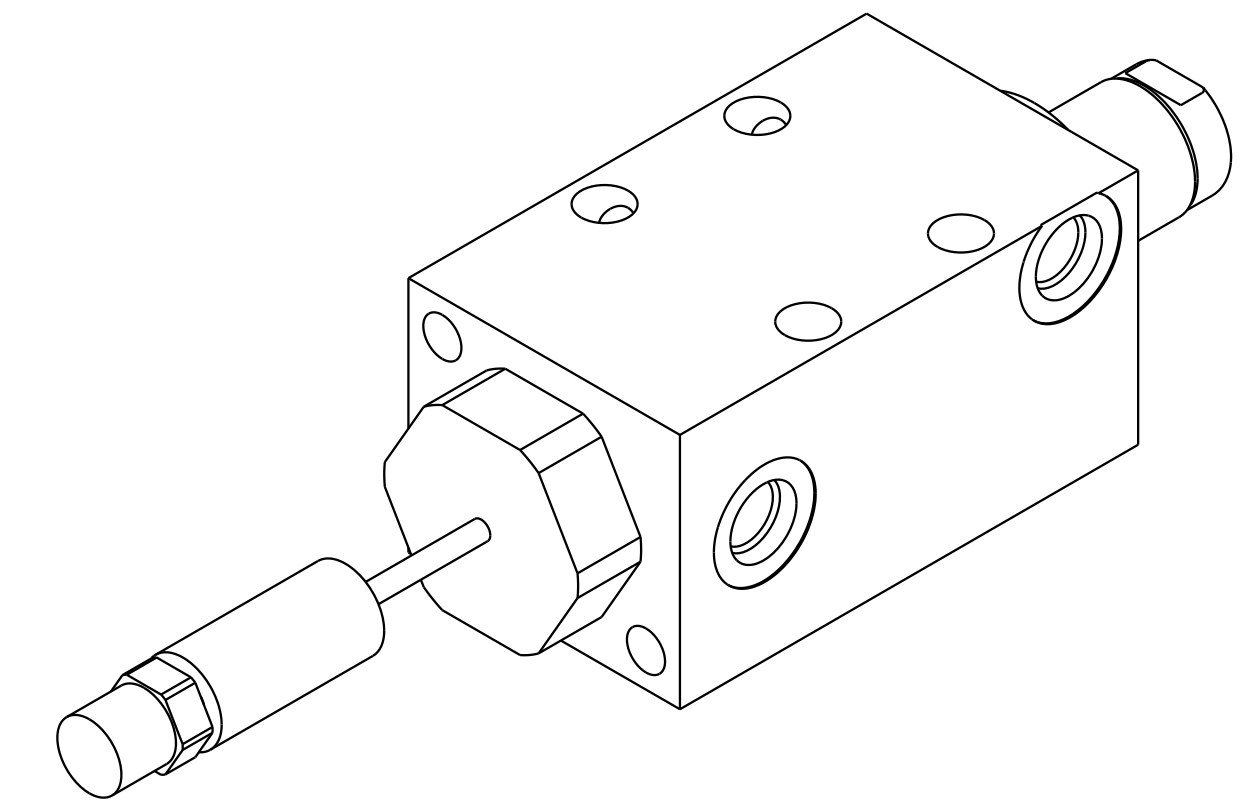
C

B

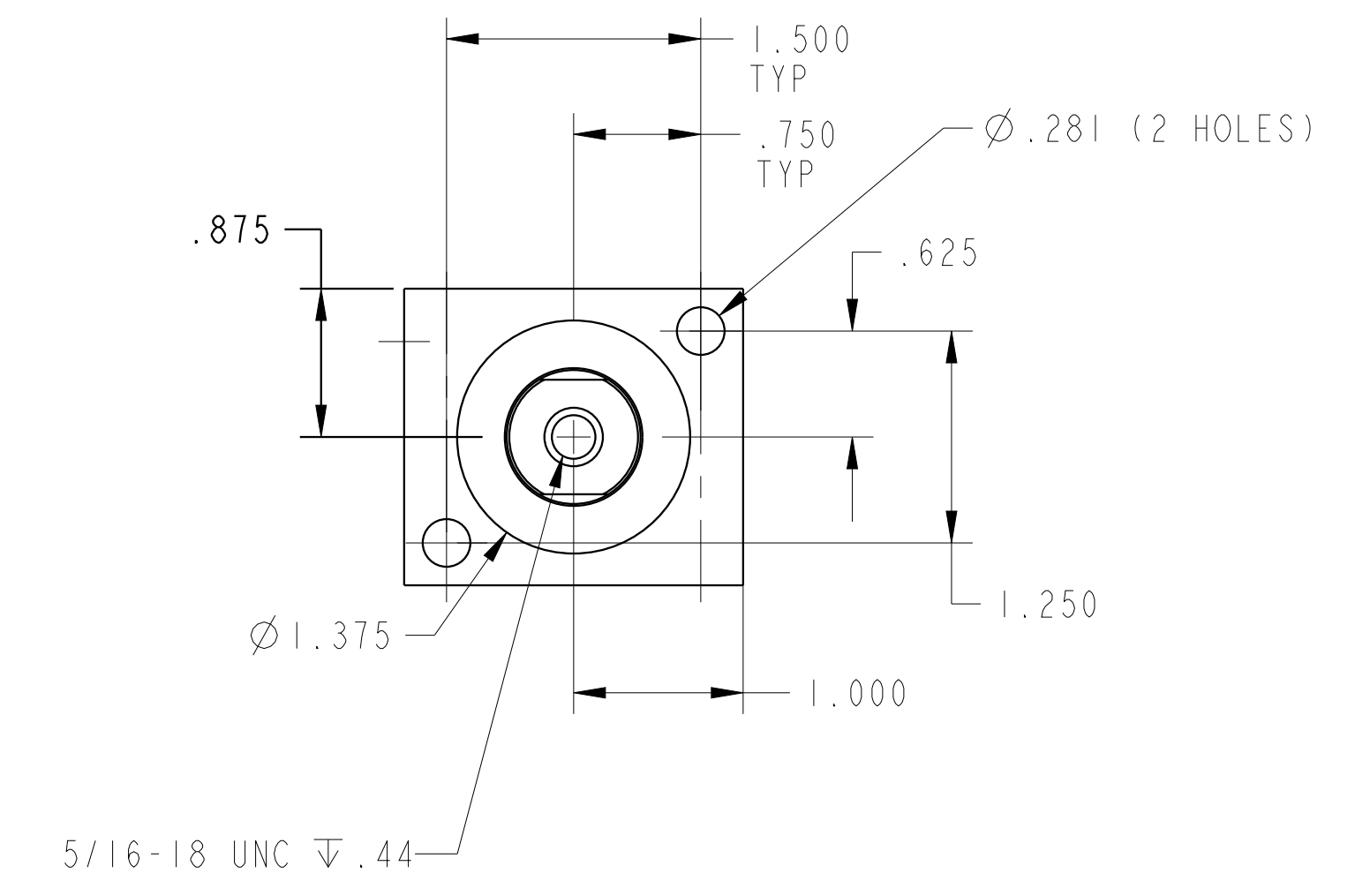
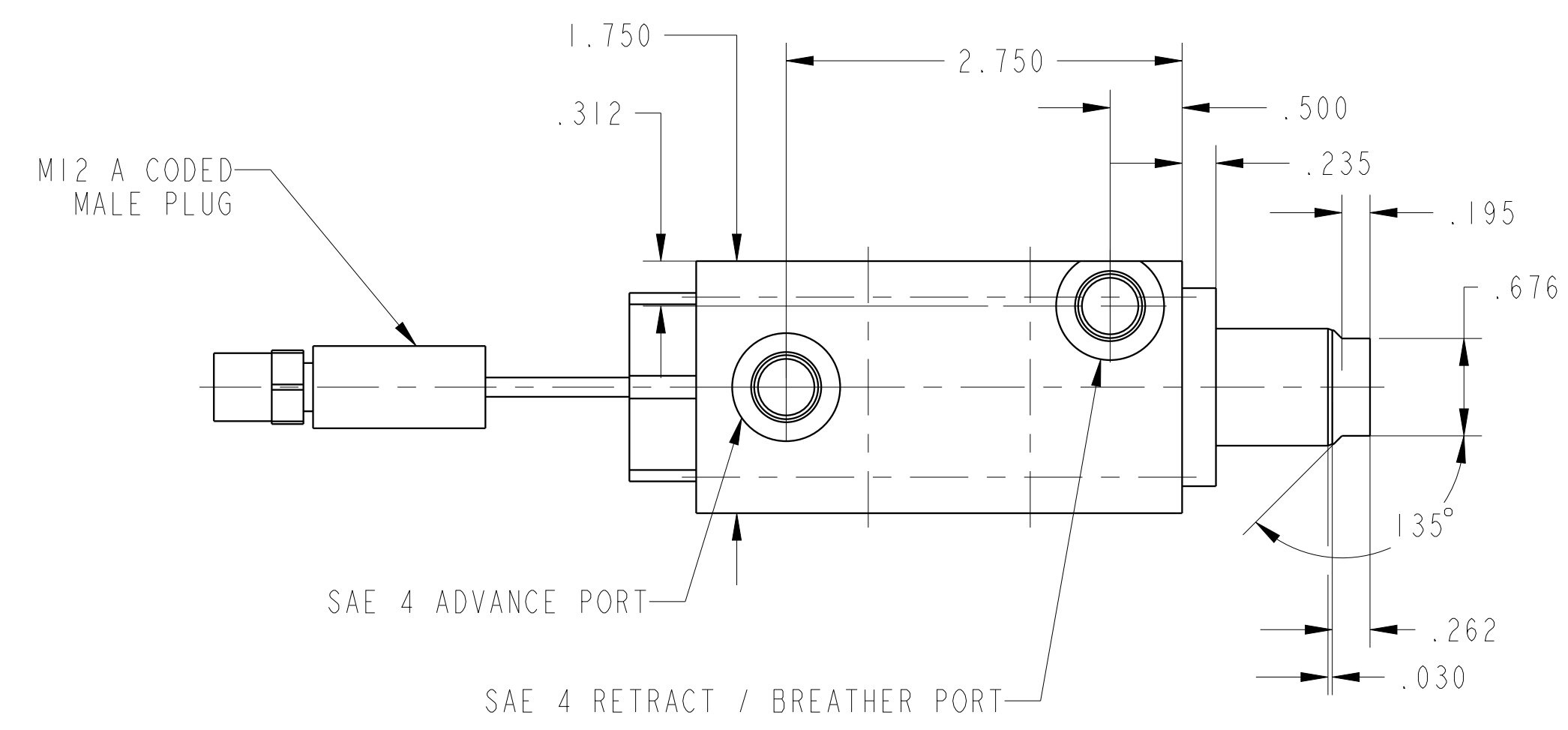
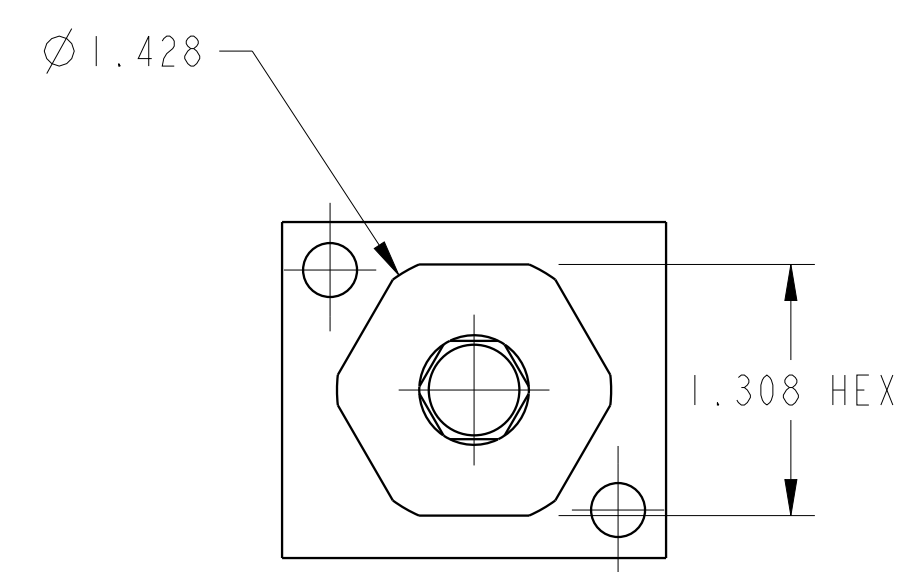
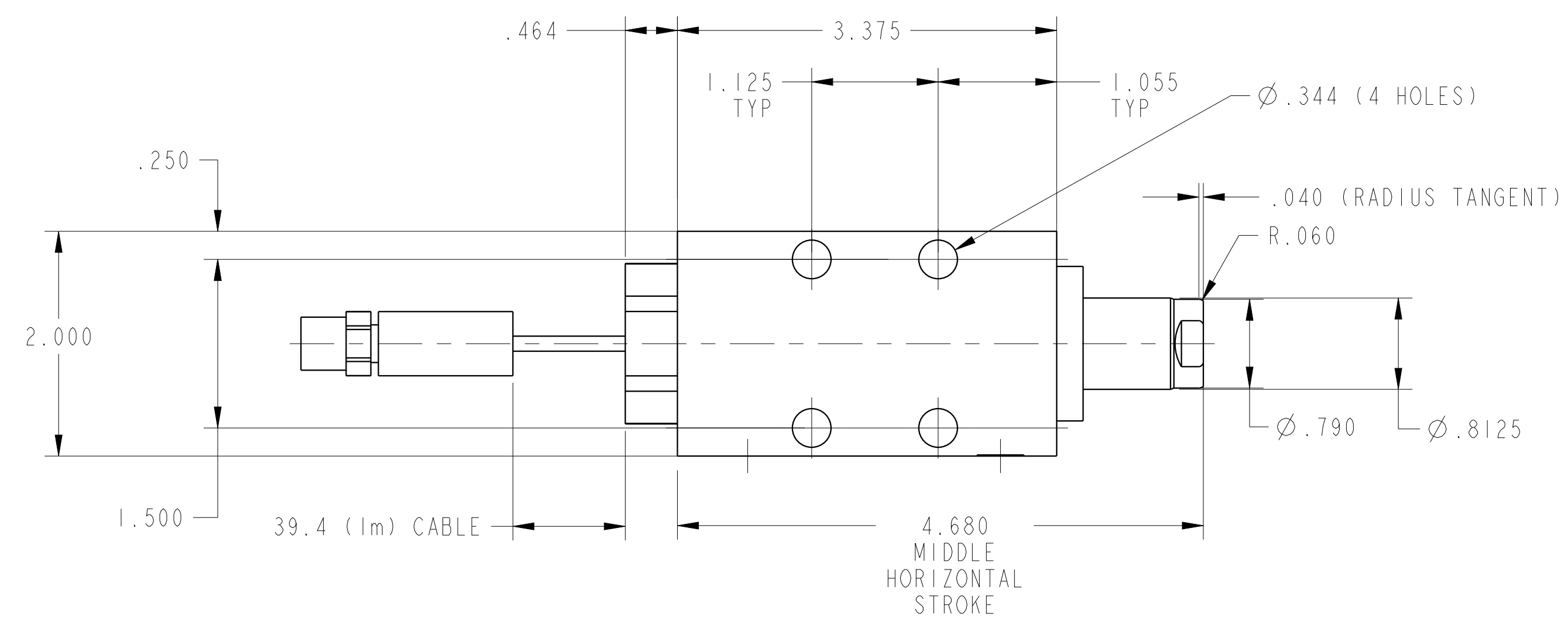
B

A

A



ILC20121004US REV A ECN 5529



**CAD CONTROL DRAWING**



VEKTEK, INC.  
1334 E. SIXTH AVE. P.O. BOX 625  
EMPORIA, KS. 66801 U.S.A.

A	5529	RELEASE	ALS	3/18/25
REV	IN ACCORDANCE WITH ECN	EFFECTIVE DATE	REVISED BY	DATE
DRW BY:	ALS	<b>DRAWING STATUS: Released</b>		
DATE:	10/29/24	PRODUCTION APPROVED FOR RELEASED STATUS ONLY		

20121004US	A
REFERENCE MODEL	REF REV
TOLERANCES DO NOT APPLY DIMENSIONS ARE NOMINAL	

SIZE D	ILC20121004US	REV A
FORM FEG036, Rev. B		