

1

2

3

4

D

D

C

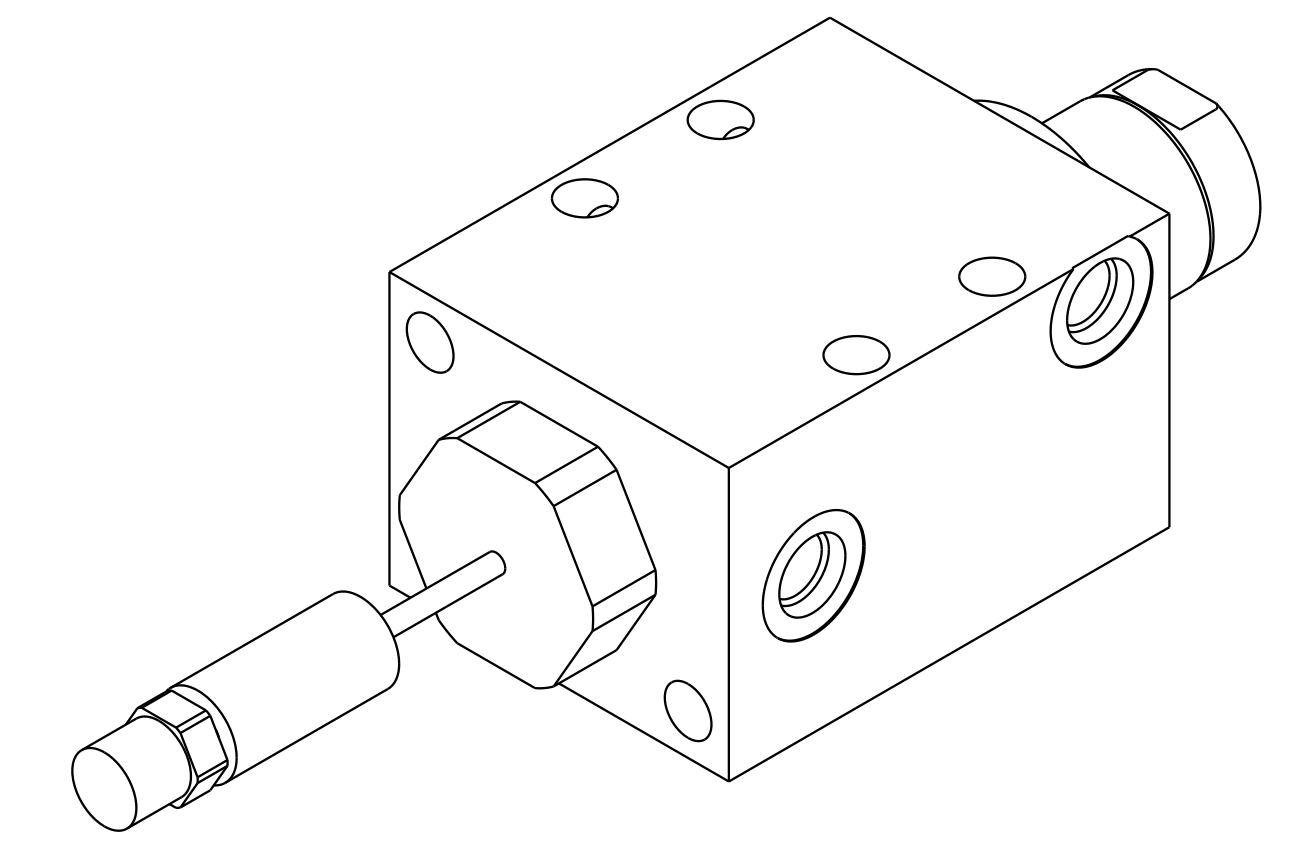
C

B

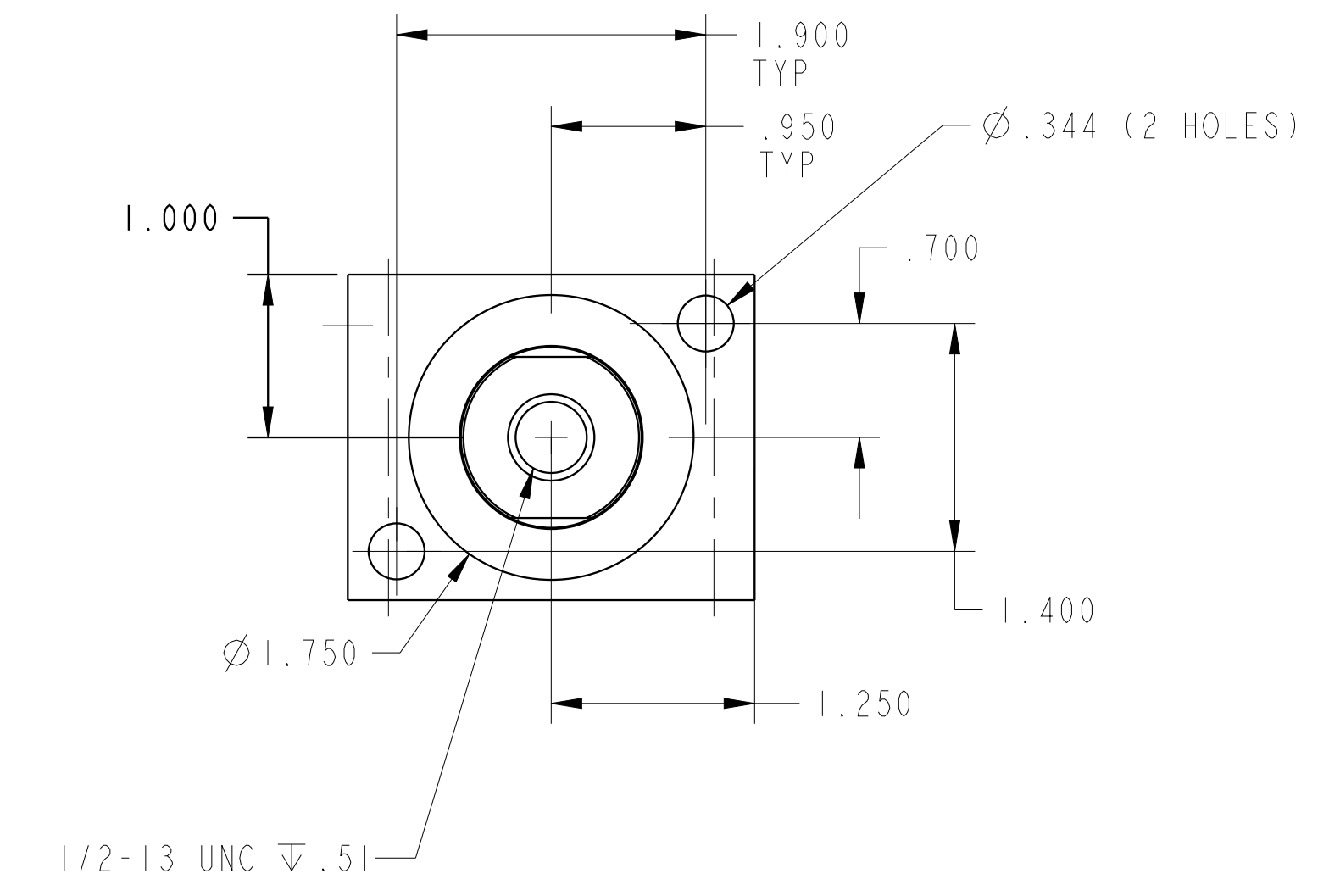
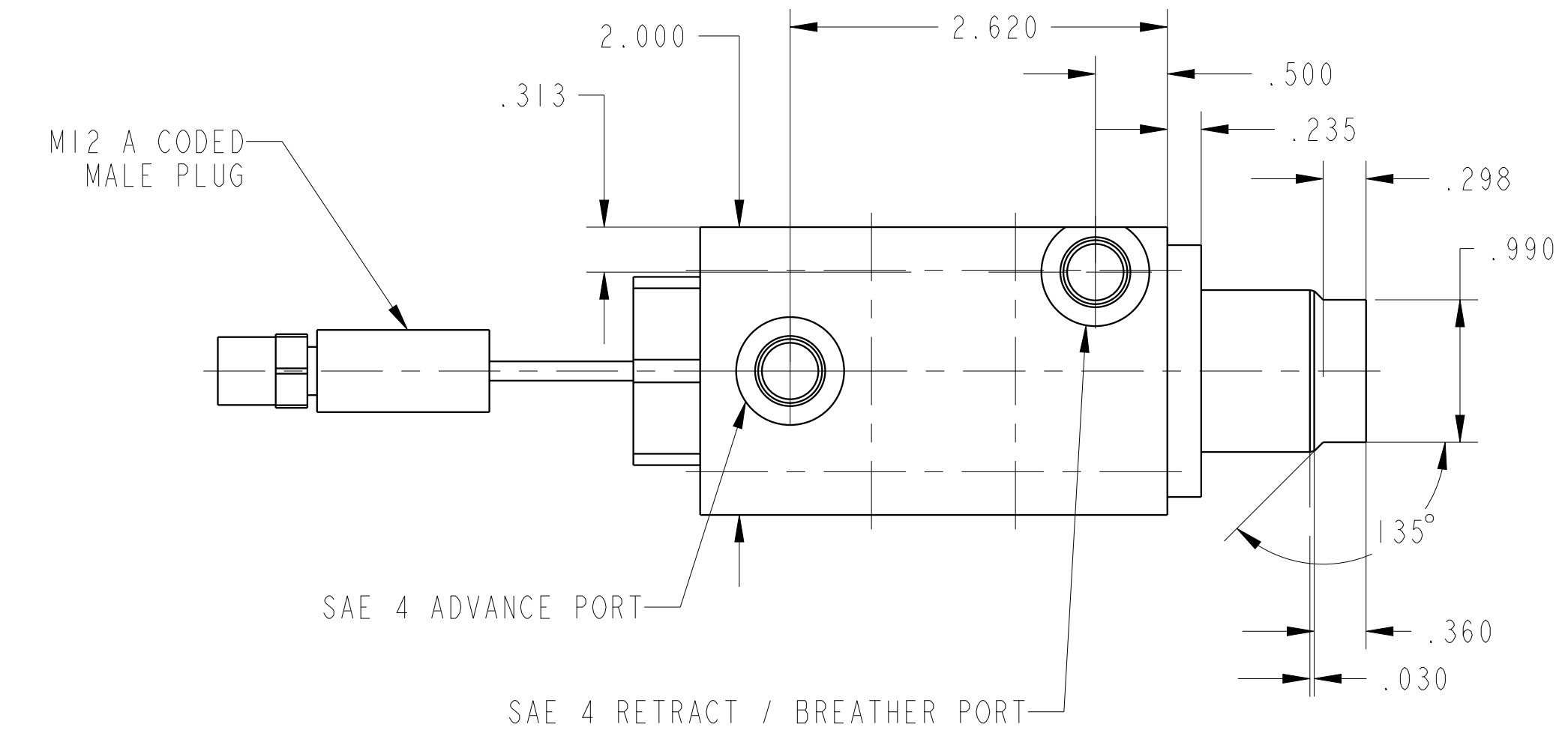
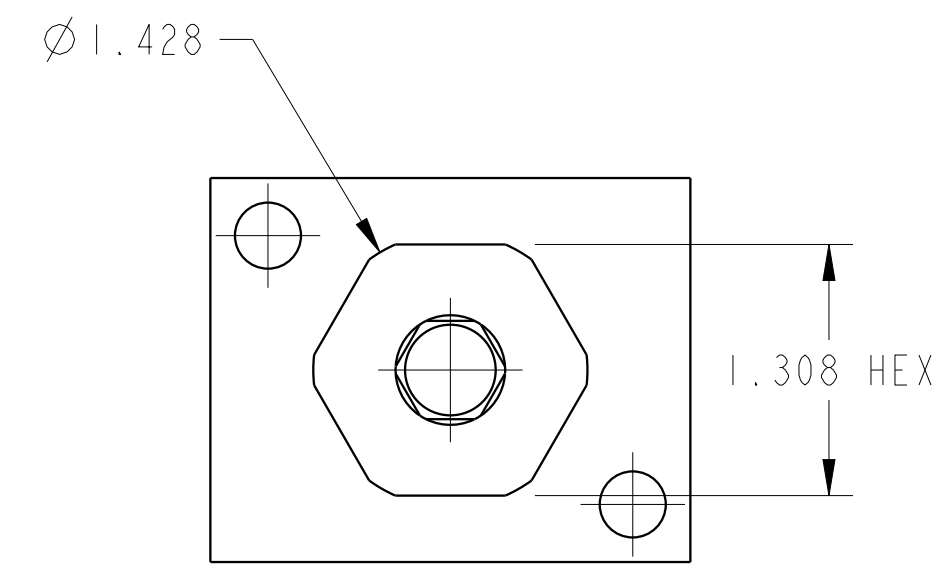
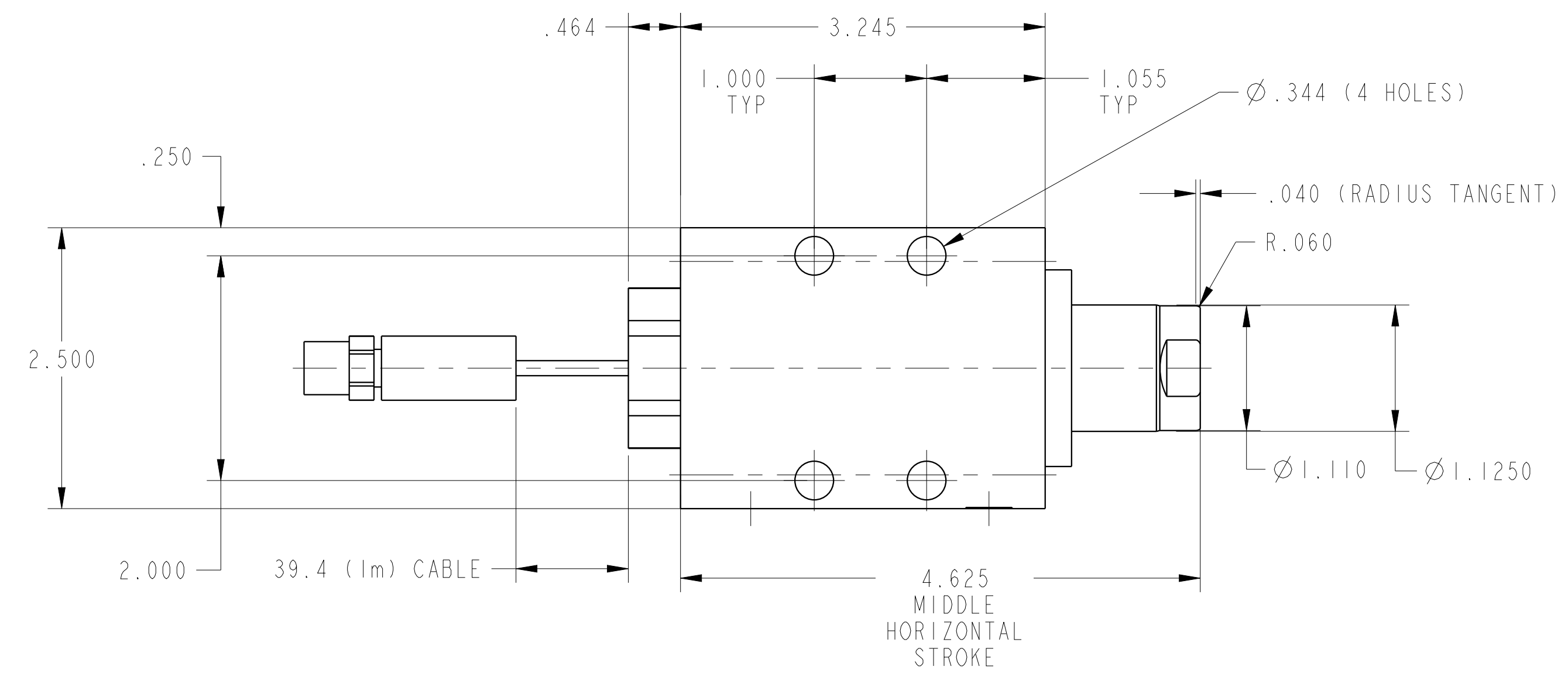
B

A

A



ILC20121504US REV A ECN 5529



**CAD CONTROL DRAWING**



VEKTEK, INC.  
1334 E. SIXTH AVE. P.O. BOX 625  
EMPORIA, KS. 66801 U.S.A.

A	5529	RELEASE	ALS	3/18/25	20121504US	A	CYL, BB, DA, 8800, 1.5 STRK, US
REV	IN ACCORDANCE WITH ECN	EFFECTIVE DATE	REVISED BY	DATE	REFERENCE MODEL	REF REV	
DRW BY:	ALS	DRAWING STATUS: Released			TOLERANCES DO NOT APPLY		SIZE D
DATE:	10/29/24	PRODUCTION APPROVED FOR RELEASED STATUS ONLY			DIMENSIONS ARE NOMINAL		ILC20121504US REV A