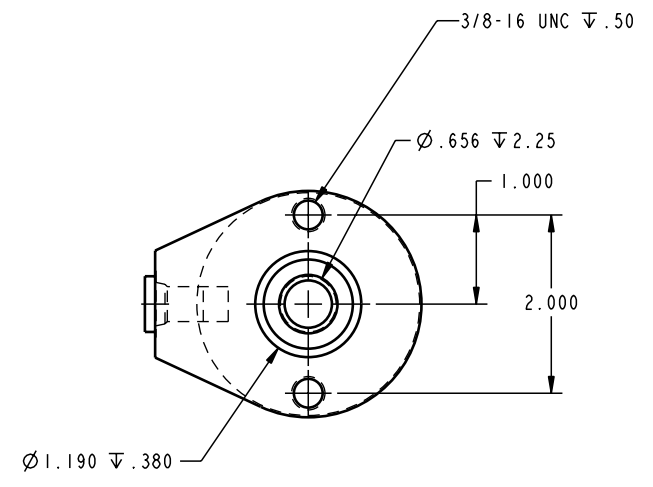
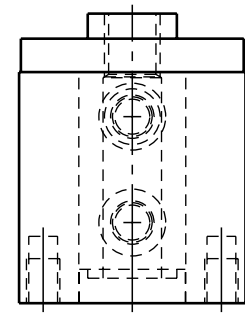
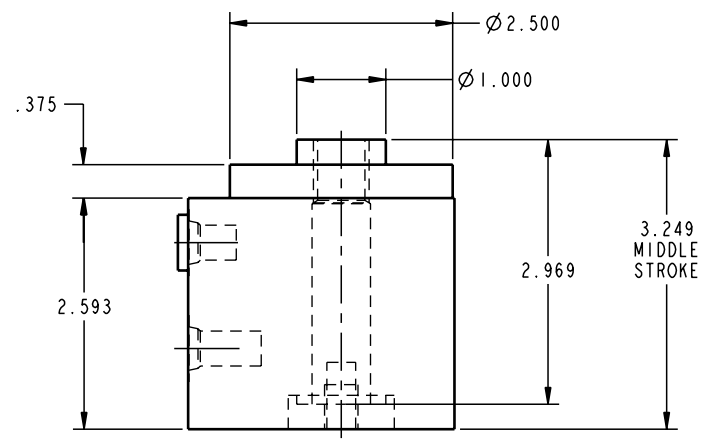
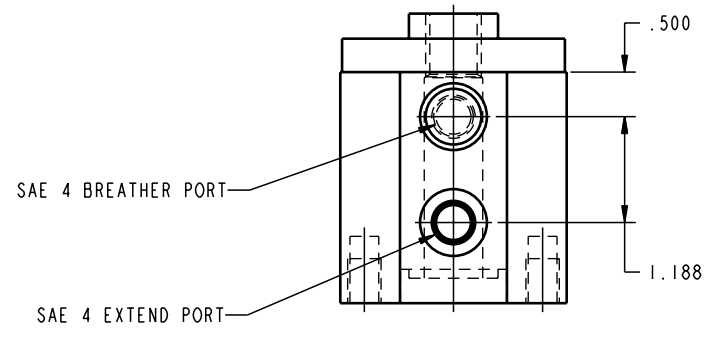


SCALE 1.000  
 ILC20212005 REV A ECN 648



CAD CONTROL  
 DRAWING



VEKTEK, INC.  
 1334 E. SIXTH AVE. P.O. BOX 625  
 EMPORIA, KS. 66801 U.S.A.

|         |                        |  |            |          |                         |         |                            |
|---------|------------------------|--|------------|----------|-------------------------|---------|----------------------------|
| A       | 648                    | RELEASE                                      | K. ROEMER  | 04-07-05 | 20212005                | J       | CYL, HR, SA, 11700 .50 STK |
| REV     | IN ACCORDANCE WITH ECN | EFFECTIVE DATE                               | REVISED BY | DATE     | REFERENCE MODEL         | REF REV |                            |
| DRW BY: | K. ROEMER              | DRAWING STATUS: <b>Released</b>              |            |          | TOLERANCES DO NOT APPLY |         | SIZE                       |
| DATE:   | 06-07-02               | PRODUCTION APPROVED FOR RELEASED STATUS ONLY |            |          | DIMENSIONS ARE NOMINAL  |         | D ILC20212005 REV A        |

FORM FEG036, Rev. A