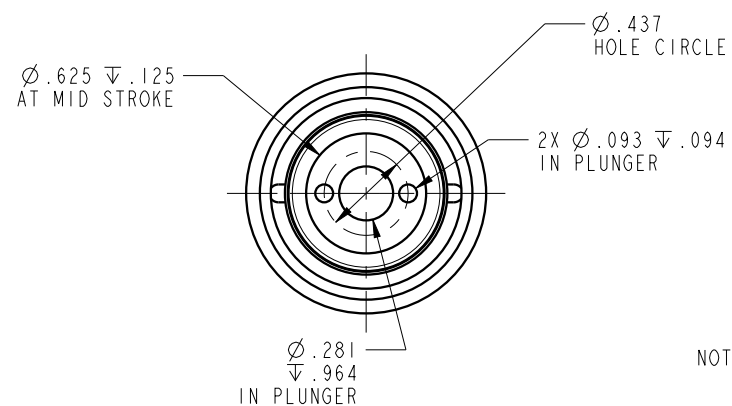
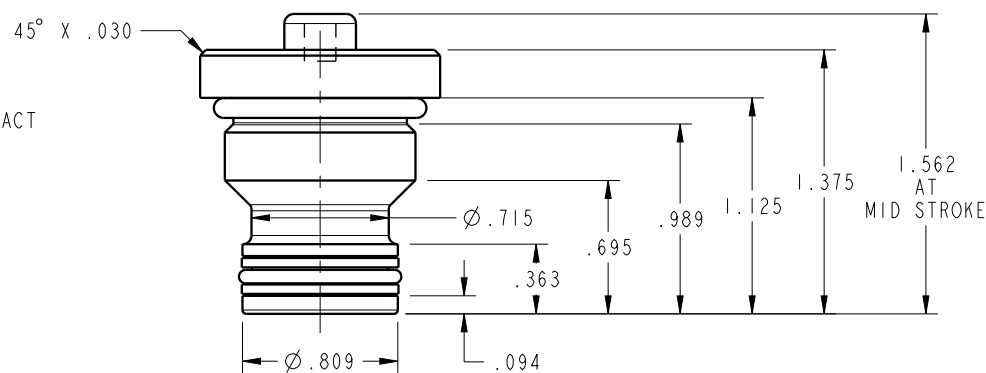
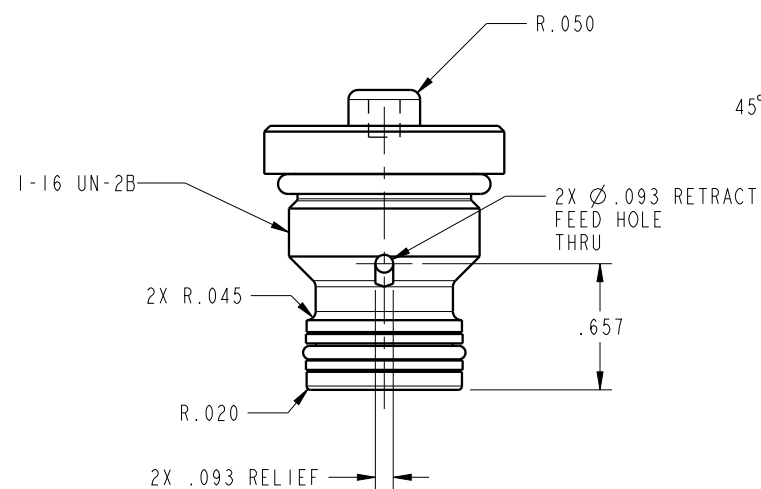


1LC21020601 REV C ECN 4055



NOTE: RETURN SPRING INCLUDED WITH CYLINDER.
SPRING OMITTED FOR CLARITY

**CAD CONTROL
DRAWING**



VEKTEK, INC.
1334 E. SIXTH AVE. P.O. BOX 625
EMPORIA, KS. 66801 U.S.A.

REV	C	4055	RELEASE	MJUST	1/28/20	21020601	B	CYL, CM, PP, 1500LB
REV	IN ACCORDANCE WITH ECN		EFFECTIVE DATE	REVISED BY	DATE	REFERENCE MODEL	REF REV	8-32 THREAD
DRW BY:	DKC		DRAWING STATUS: Released			TOLERANCES DO NOT APPLY DIMENSIONS ARE NOMINAL		SIZE B
DATE:	8/25/14		PRODUCTION APPROVED FOR RELEASED STATUS ONLY			ILC21020601		REV C

FORM FEG036, Rev. B

SHEET 1 OF 1