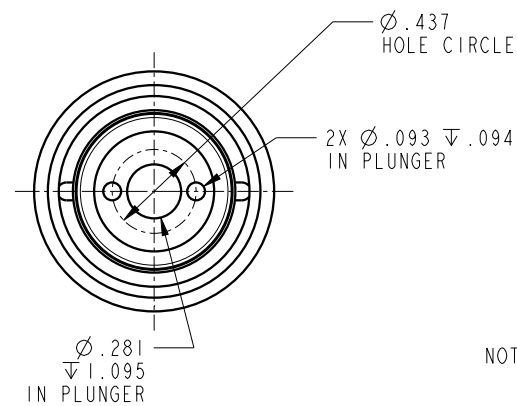
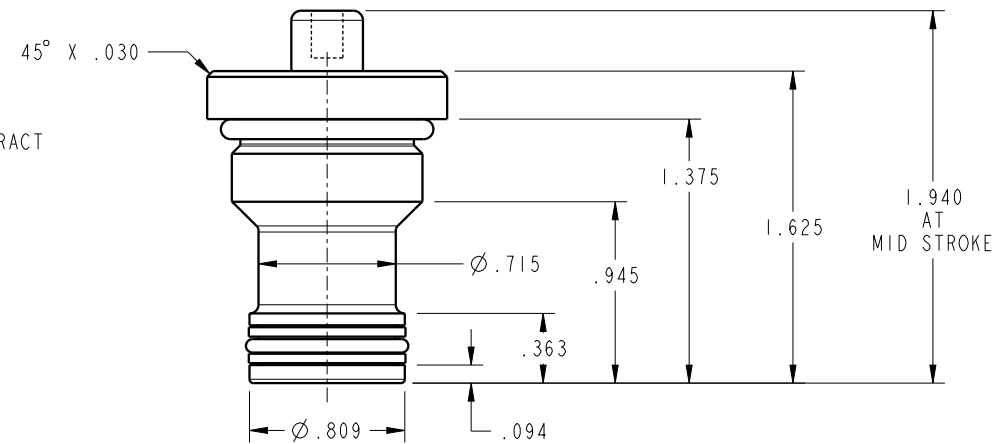
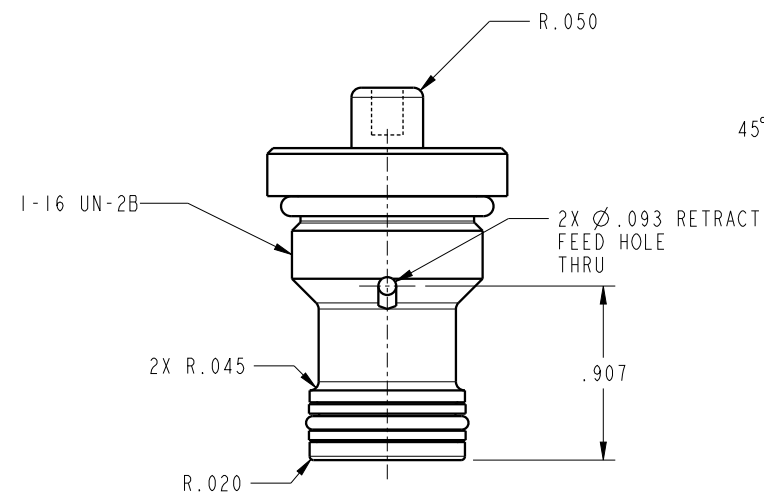

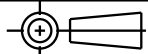


ILC21020611 REV A ECN 5579



NOTE: RETURN SPRING INCLUDED WITH CYLINDER.
SPRING OMITTED FOR CLARITY

CAD CONTROL DRAWING				 VEKTEK, INC. 1334 E. SIXTH AVE. P.O. BOX 625 EMPORIA, KS. 66801 U.S.A.			
							
A	5579	RELEASE	BDC	11/18/24	21020611	A	CYL, CM, PP, 1500LB, .50 STROKE
REV	IN ACCORDANCE WITH ECN	EFFECTIVE DATE	REVISED BY	DATE	REFERENCE MODEL	REF REV	8-32 THREAD
DRW BY:	BDC	DRAWING STATUS: Released			TOLERANCES DO NOT APPLY		SIZE
DATE:	11/17/24	PRODUCTION APPROVED FOR RELEASED STATUS ONLY			DIMENSIONS ARE NOMINAL		B
						ILC21020611	REV A
						FORM FEG036, Rev. B	

SHEET 1 OF 1