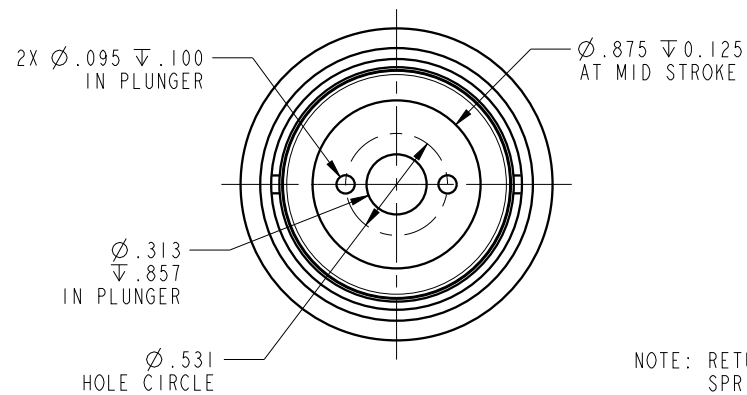
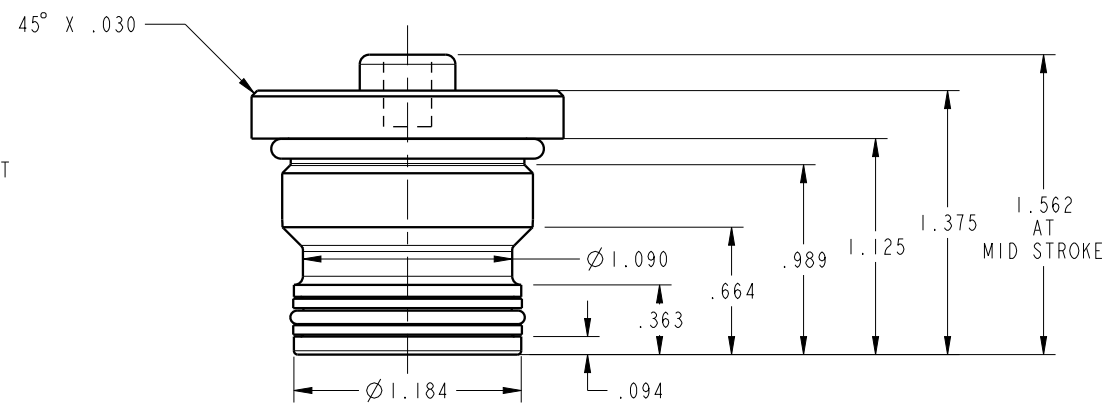
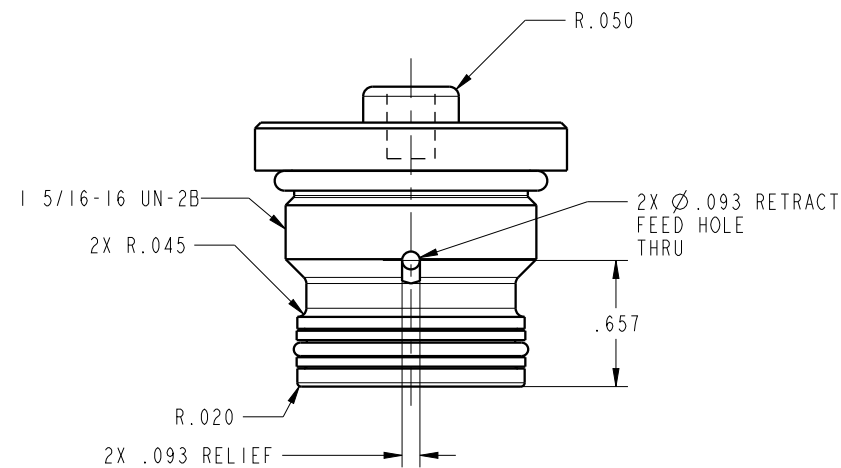


ILC21020901 REV C ECN 4055

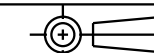


NOTE: RETURN SPRING INCLUDED WITH CYLINDER.  
SPRING OMITTED FOR CLARITY

**CAD CONTROL  
DRAWING**



VEKTEK, INC.  
1334 E. SIXTH AVE. P.O. BOX 625  
EMPORIA, KS. 66801 U.S.A.



C	4055	RELEASE	MJUST	1/28/20	21020901	B	CYL, CM, PP, 2900LB
REV	IN ACCORDANCE WITH ECN	EFFECTIVE DATE	REVISED BY	DATE	REFERENCE MODEL	REF REV	1/4-20 THREAD
DRW BY:	DKC	<b>DRAWING STATUS: Released</b>			TOLERANCES DO NOT APPLY DIMENSIONS ARE NOMINAL		SIZE B
DATE:	8/25/14	PRODUCTION APPROVED FOR RELEASED STATUS ONLY					ILC21020901 REV C

FORM FEG036, Rev. B

SHEET 1 OF 1