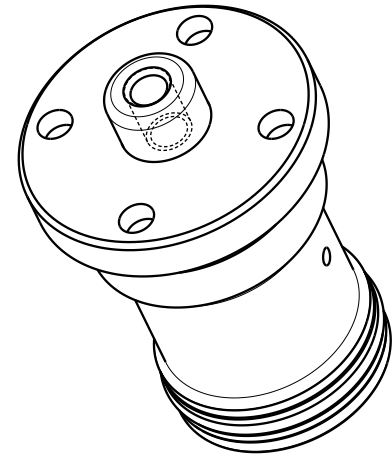
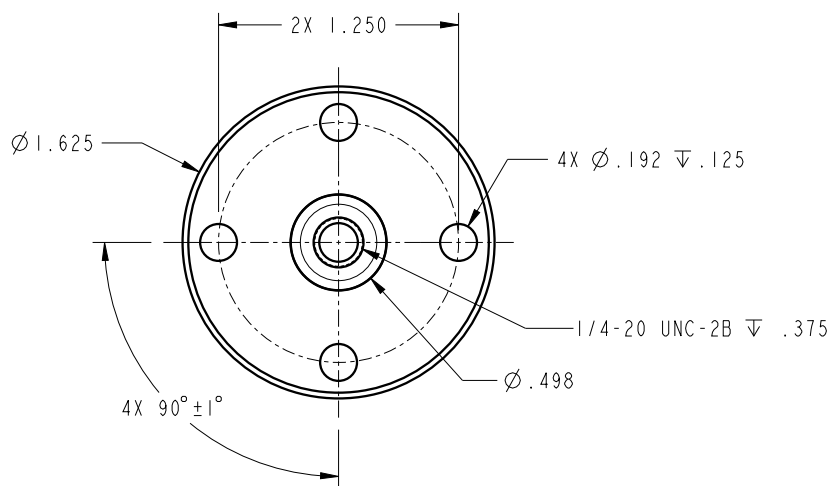


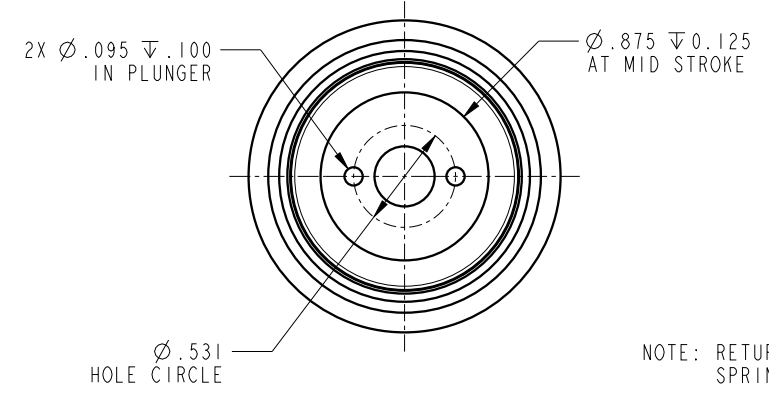
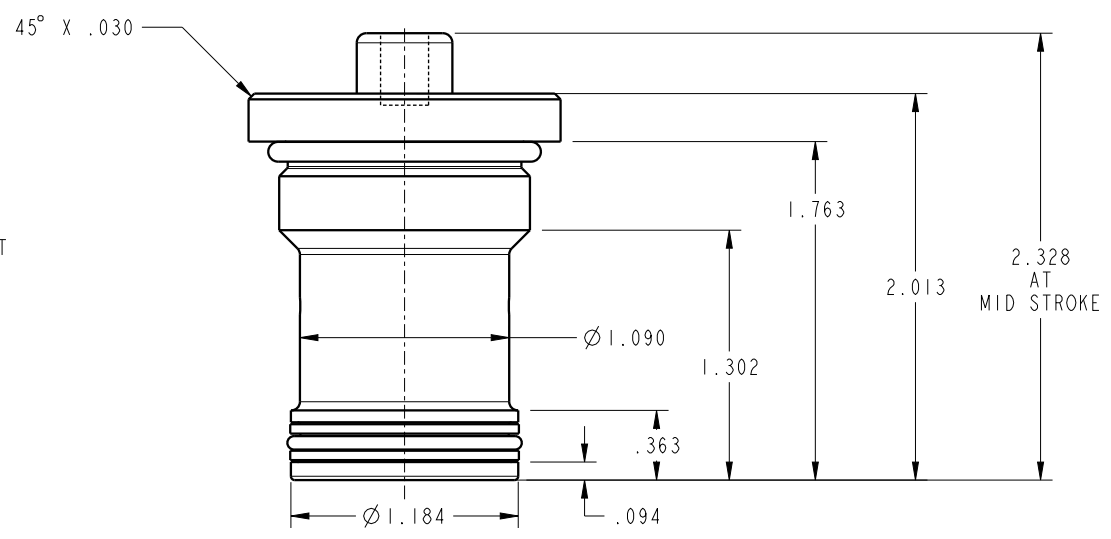
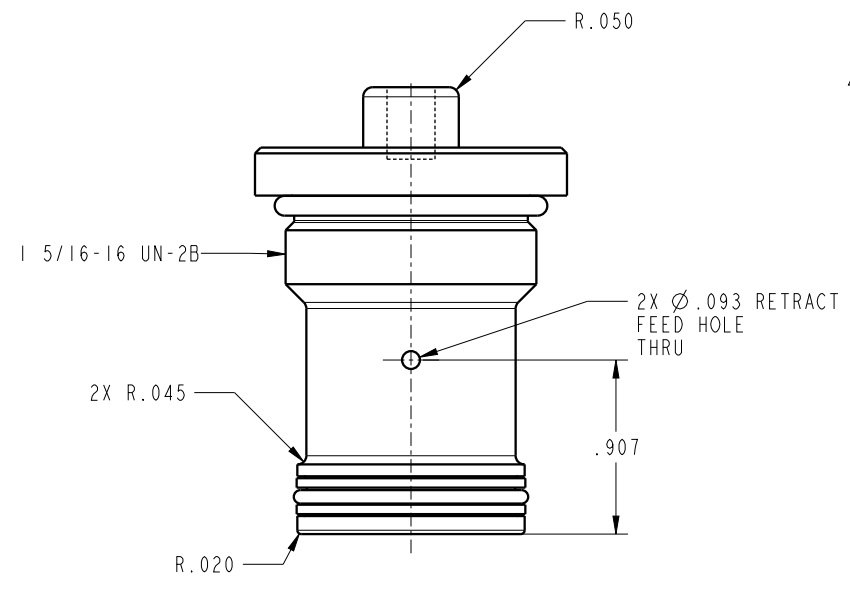
1 2 3 4

D  
C  
B  
A

D  
C  
B  
A



ILC21020911 REV A ECN 5579



NOTE: RETURN SPRING INCLUDED WITH CYLINDER.  
SPRING OMITTED FOR CLARITY

<b>CAD CONTROL DRAWING</b> 	 VEKTEK, INC. 1334 E. SIXTH AVE. P.O. BOX 625 EMPORIA, KS. 66801 U.S.A.

A	5579	RELEASE	BDC	11/18/24	21020911	A	
REV	IN ACCORDANCE WITH ECN	EFFECTIVE DATE	REVISED BY	DATE	REFERENCE MODEL	REF REV	
DRW BY:	BDC	<b>DRAWING STATUS: Released</b>				TOLERANCES DO NOT APPLY	SIZE
DATE:	11/17/24	PRODUCTION APPROVED FOR RELEASED STATUS ONLY				DIMENSIONS ARE NOMINAL	B

SIZE	B	ILC21020911	REV	A
FORM FEG036, Rev. B				

SHEET 1 OF 1

1 2 3 4