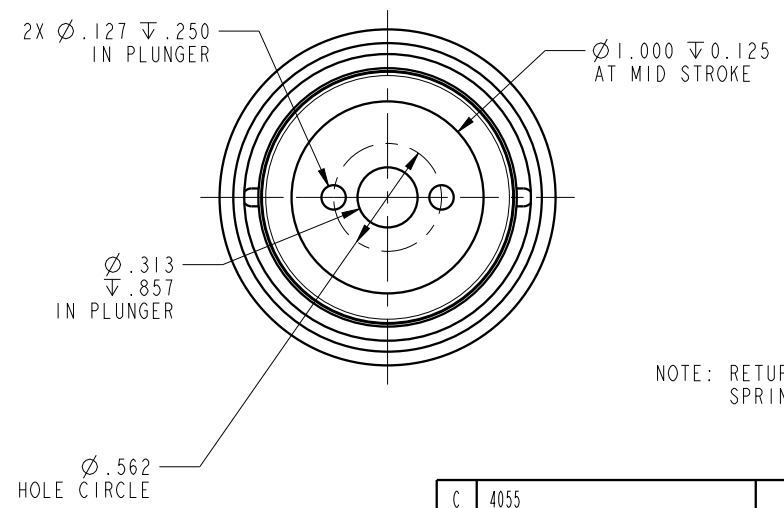
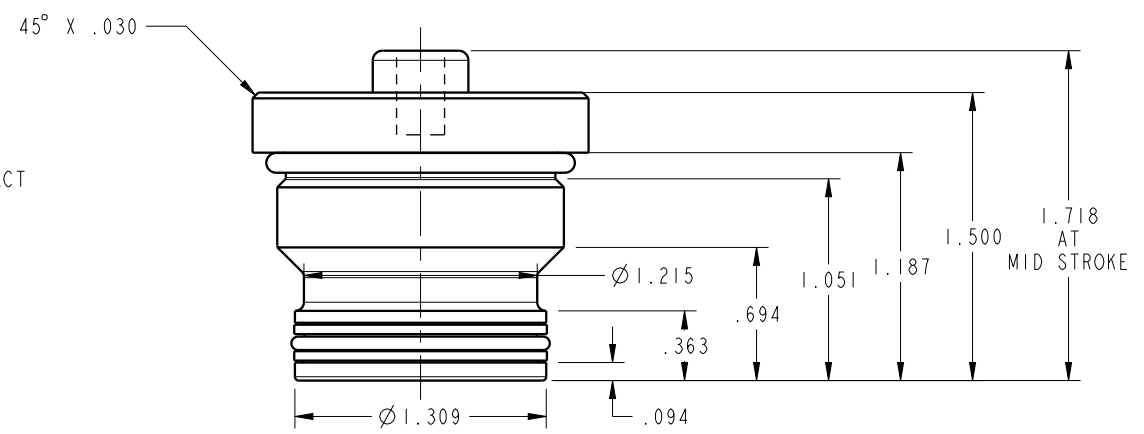
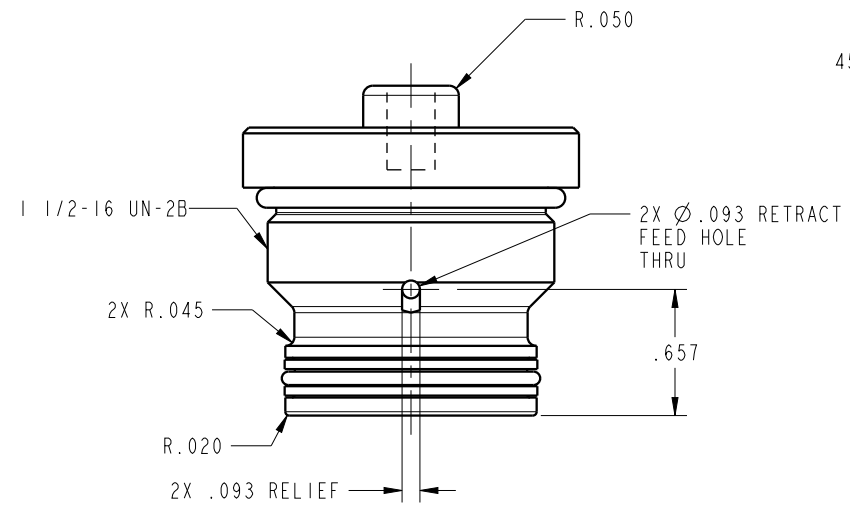


ILC21021000 REV C ECN 4055



NOTE: RETURN SPRING INCLUDED WITH CYLINDER.
SPRING OMITTED FOR CLARITY

CAD CONTROL DRAWING		 VEKTEK, INC. 1334 E. SIXTH AVE. P.O. BOX 625 EMPORIA, KS. 66801 U.S.A.

C	4055	RELEASE	MJUST	1/28/20
REV	IN ACCORDANCE WITH ECN	EFFECTIVE DATE	REVISED BY	DATE
DRW BY:	DRAWING STATUS: Released		TOLERANCES DO NOT APPLY	
DATE:	PRODUCTION APPROVED FOR RELEASED STATUS ONLY		DIMENSIONS ARE NOMINAL	

21021000	B	CYL, CM, PP, 3900LB
REFERENCE MODEL	REF REV	1/4-20 THREAD
SIZE B	ILC21021000	REV C