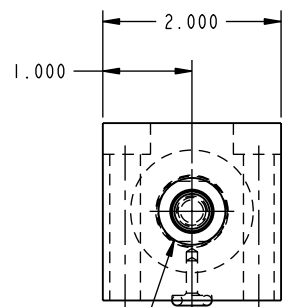
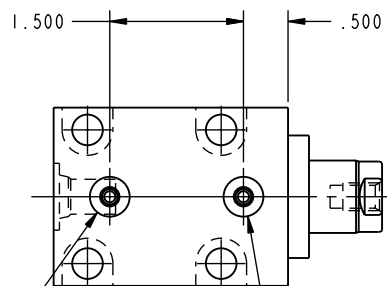
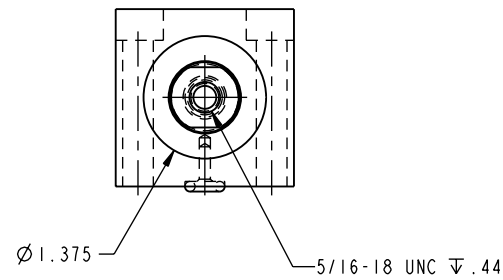
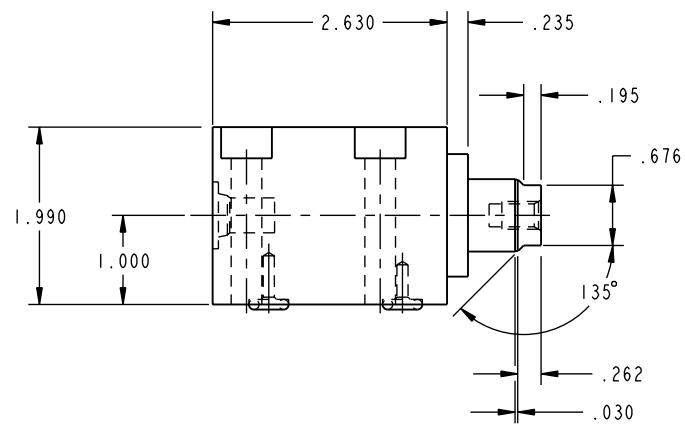


ILC21111001 REV C ECN 1873
 SCALE 1.000



SAE 4 EXTEND PORT WITH .065 ∇ SPOTFACE



O-RING EXTEND PORT O-RING BREATHER PORT

CAD CONTROL DRAWING



VEKTEK, INC.
 1334 E. SIXTH AVE. P.O. BOX 625
 EMPORIA, KS. 66801 U.S.A.

C	1873	RELEASE	GLR	03/12/08	21111001	E	CYL, BB, MM, SA, 3900, 1.0 STRK
REV	IN ACCORDANCE WITH ECN	EFFECTIVE DATE	REVISED BY	DATE	REFERENCE MODEL	REF REV	''''
DRW BY:	K. ROEMER	DRAWING STATUS: Released			TOLERANCES DO NOT APPLY		SIZE
DATE:	04-01-02	PRODUCTION APPROVED FOR RELEASED STATUS ONLY			DIMENSIONS ARE NOMINAL		D ILC21111001 C

FORM FEG036, Rev. A

SHEET 1 OF 1