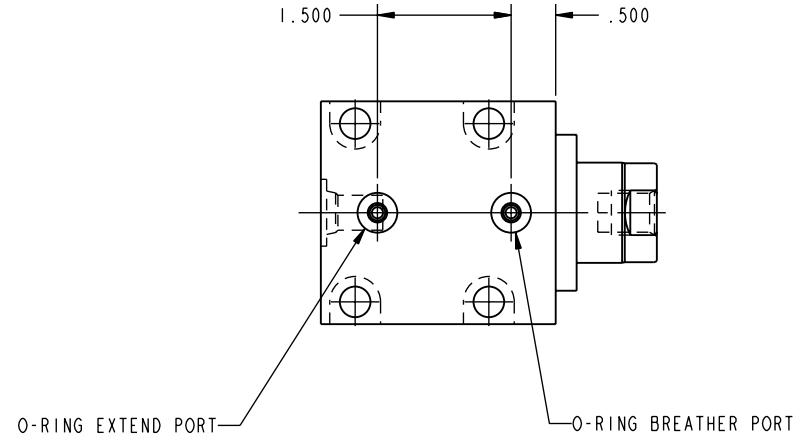
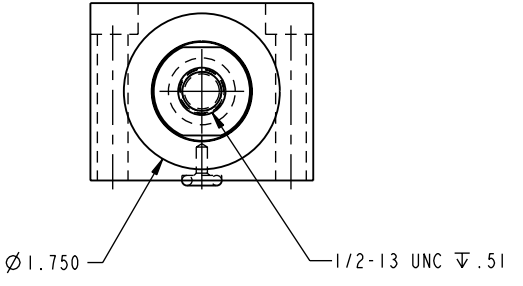
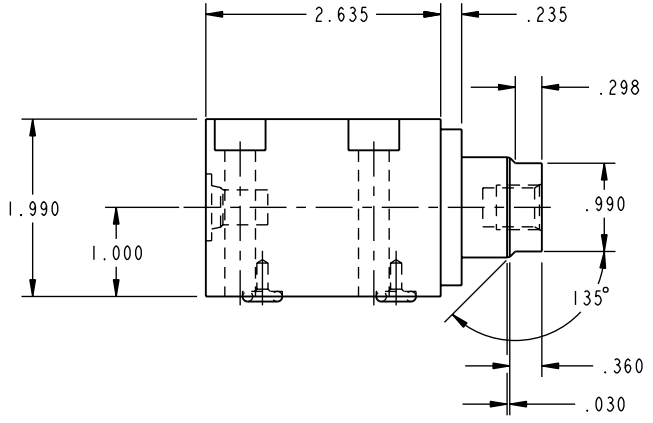
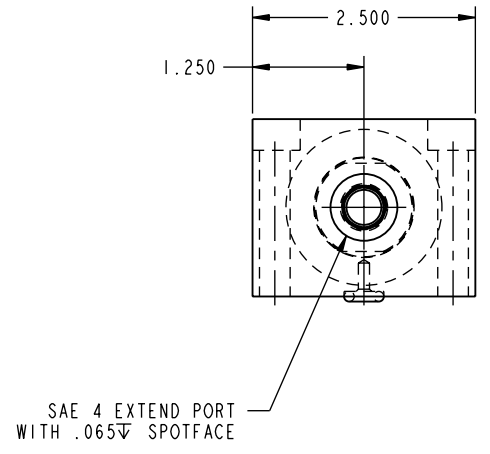


ILC21111501 REV C ECN 1873  
SCALE 1.000



CAD CONTROL DRAWING



VEKTEK, INC.  
1334 E. SIXTH AVE. P.O. BOX 625  
EMPORIA, KS. 66801 U.S.A.

REV	1873	RELEASE	GLR	03/12/08	21111501	D	CYL, BB, MM, SA, 8800, 1.0 STR
REV	IN ACCORDANCE WITH ECN		EFFECTIVE DATE	REVISED BY	DATE	REFERENCE MODEL	REF REV
DRW BY:	K. ROEMER		DRAWING STATUS: Released		TOLERANCES DO NOT APPLY		SIZE
DATE:	04-01-02		PRODUCTION APPROVED FOR RELEASED STATUS ONLY		DIMENSIONS ARE NOMINAL		D ILC21111501 REV C

FORM FEG036, Rev. A