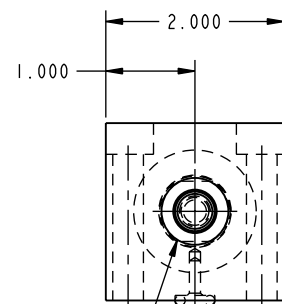
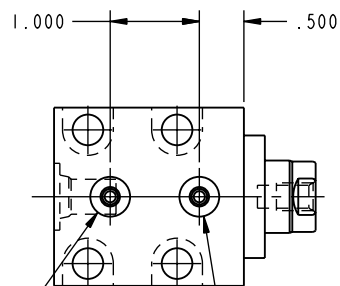
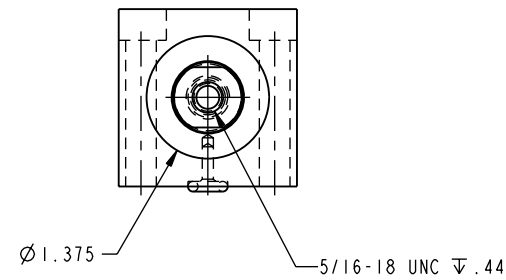
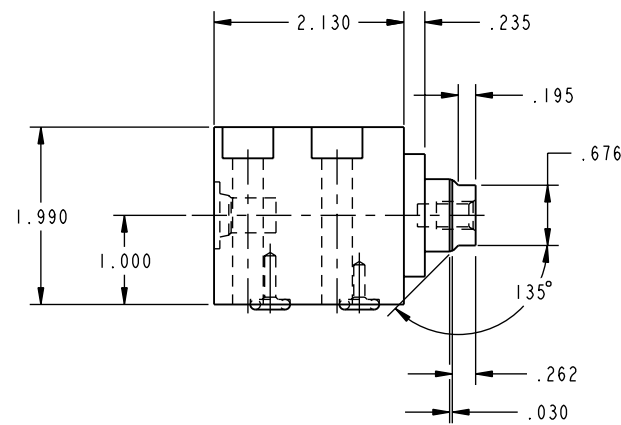


ILC21121000 REV C ECN 1873  
SCALE 1.000



SAE 4 EXTEND PORT  
WITH .065√ SPOTFACE



O-RING EXTEND PORT O-RING RETRACT PORT

CAD CONTROL  
DRAWING



VEKTEK, INC.  
1334 E. SIXTH AVE. P.O. BOX 625  
EMPORIA, KS. 66801 U.S.A.

C	1873	RELEASE	GLR	03/12/08	21121000	D	CYL, BB, MM, DA, 3900, .5 STRK
REV	IN ACCORDANCE WITH ECN	EFFECTIVE DATE	REVISED BY	DATE	REFERENCE MODEL	REF REV	''''
DRW BY:	K. ROEMER	DRAWING STATUS: <b>Released</b>			TOLERANCES DO NOT APPLY		SIZE
DATE:	04-01-02	PRODUCTION APPROVED FOR RELEASED STATUS ONLY			DIMENSIONS ARE NOMINAL		D ILC21121000 REV C

FORM FEG036, Rev. A

SHEET 1 OF 1