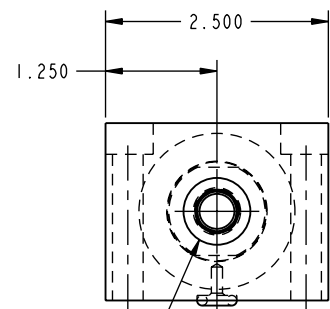
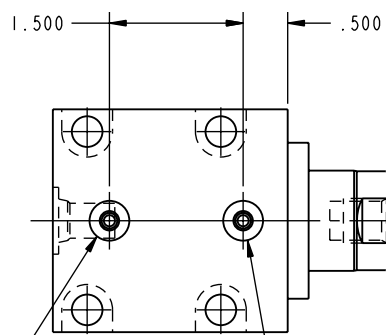
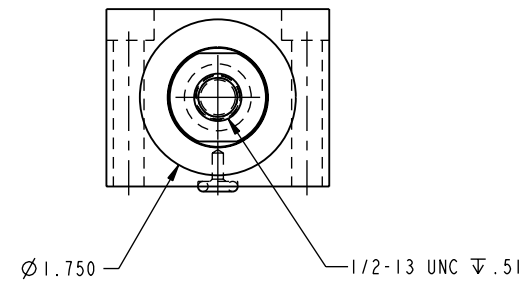
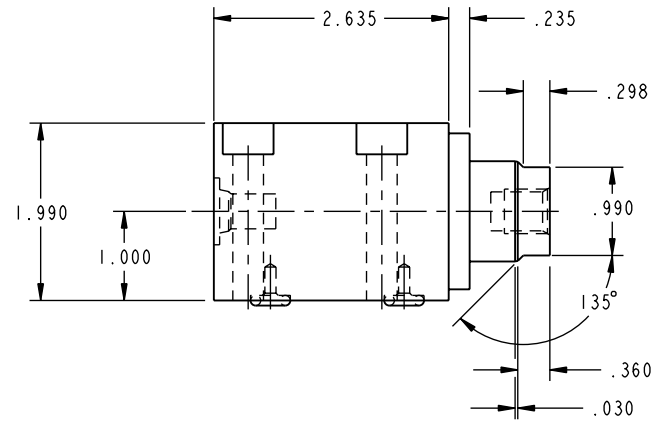


ILC21121501 REV C ECN 1873  
SCALE 1.000



SAE 4 EXTEND PORT  
WITH .065 SPOTFACE



O-RING EXTEND PORT O-RING RETRACT PORT

CAD CONTROL  
DRAWING



VEKTEK, INC.  
1334 E. SIXTH AVE. P.O. BOX 625  
EMPORIA, KS. 66801 U.S.A.

REV	1873	RELEASE	GLR	03/12/08	21121501	E	CYL, BB, MM, DA, 8800, 1.0 STRK
REV	IN ACCORDANCE WITH ECN		EFFECTIVE DATE	REVISED BY	DATE	REFERENCE MODEL	REF REV
DRW BY:	K. ROEMER		DRAWING STATUS: <b>Released</b>		TOLERANCES DO NOT APPLY		SIZE
DATE:	04-01-02		PRODUCTION APPROVED FOR RELEASED STATUS ONLY		DIMENSIONS ARE NOMINAL		D ILC21121501 C

FORM FEG036, Rev. A