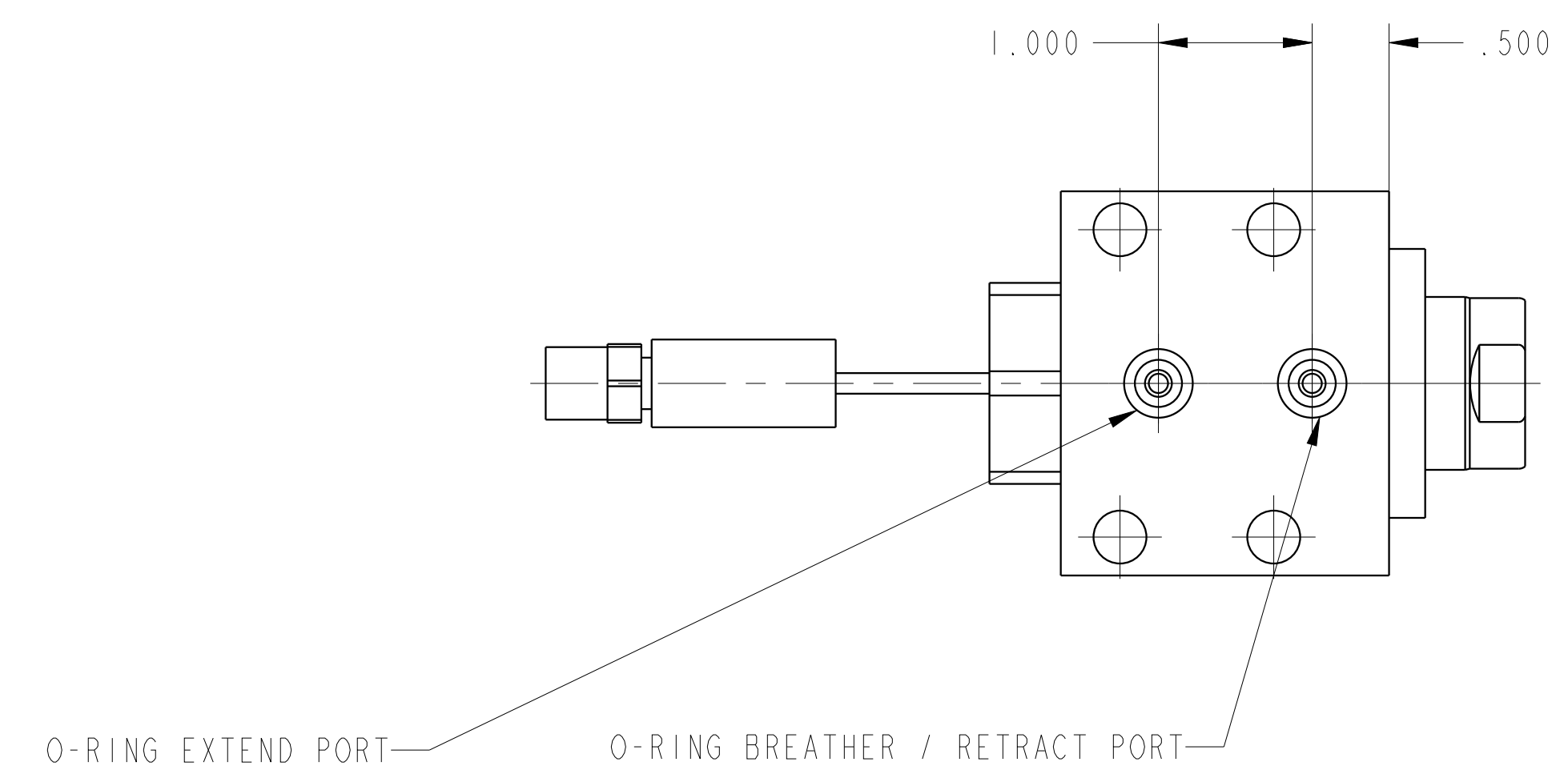
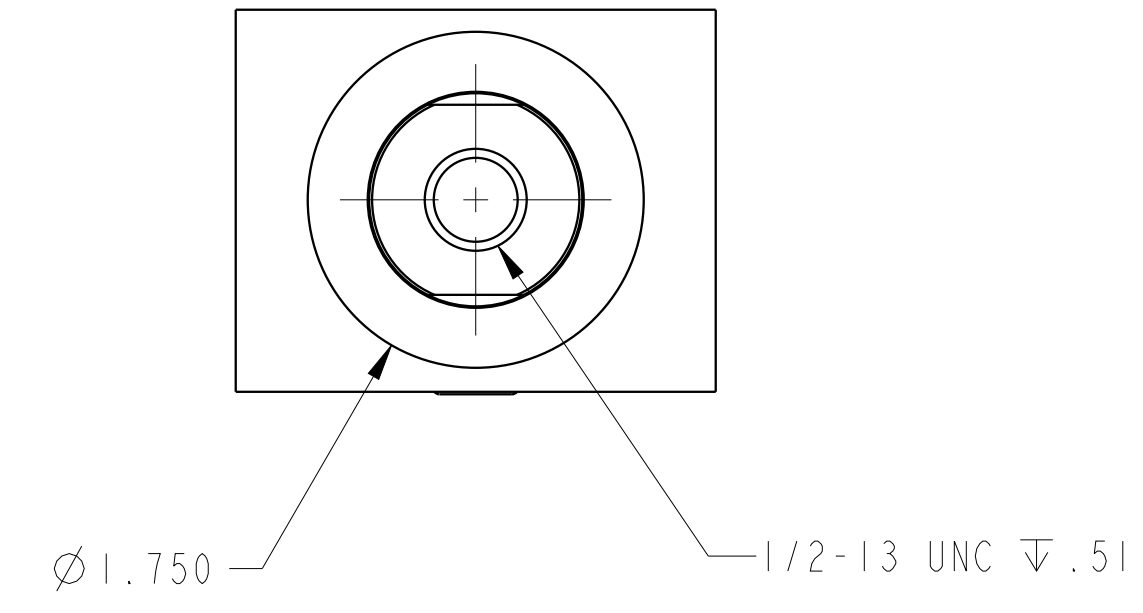
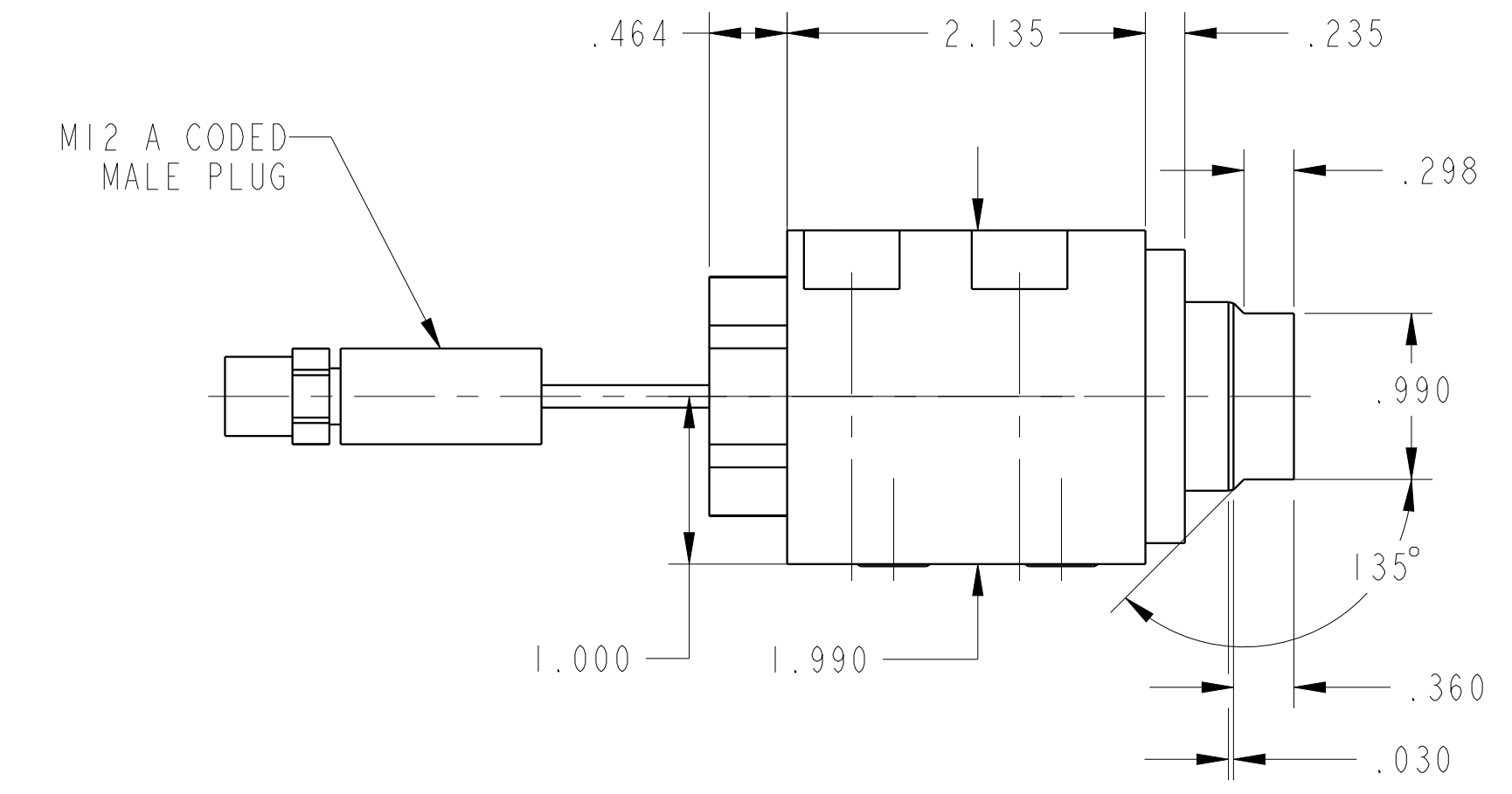
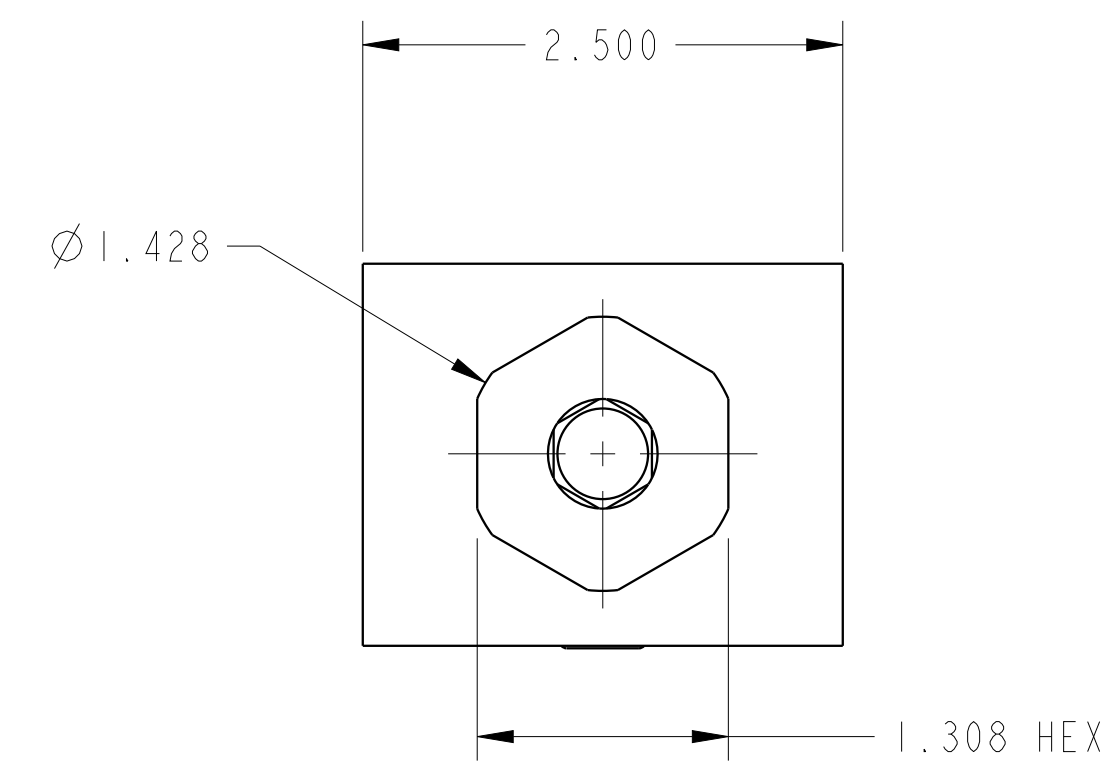


ILC21121505US REV A ECN 5529



CAD CONTROL DRAWING			
		VEKTEK, INC. 1334 E. SIXTH AVE. P.O. BOX 625 EMPORIA, KS. 66801 U.S.A.	

A	5529	RELEASE	ALS	3/18/25	21121505US	A	CYL, BB, MM, DA, 8800, .5 STRK, US
REV	IN ACCORDANCE WITH ECN	EFFECTIVE DATE	REVISED BY	DATE	REFERENCE MODEL	REF REV	
DRW BY:	ALS	DRAWING STATUS: Released			TOLERANCES DO NOT APPLY DIMENSIONS ARE NOMINAL		SIZE D
DATE:	10/29/24	PRODUCTION APPROVED FOR RELEASED STATUS ONLY			ILC21121505US		REV A