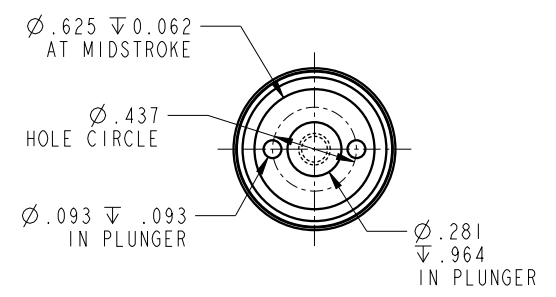
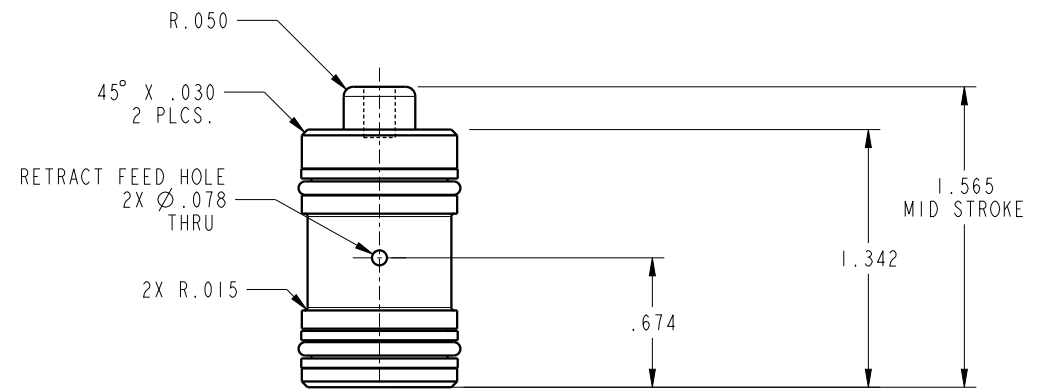


ILC21410611 REV A ECN 5580



NOTE: RETURN SPRING INCLUDED WITH CYLINDER.
 SPRING OMITTED FOR CLARITY

CAD CONTROL
 DRAWING



A	5580	RELEASE	BDC	6/30/25	21410611	A	CYL, CM, PULL, 980LB	
REV	IN ACCORDANCE WITH ECN	EFFECTIVE DATE	REVISED BY	DATE	REFERENCE MODEL	REF REV	8-32 THREAD	
DRW BY:	BDC	DRAWING STATUS: Released			TOLERANCES DO NOT APPLY	UNITS	SIZE	
DATE:	6/30/25	PRODUCTION APPROVED FOR RELEASED STATUS ONLY			DIMENSIONS ARE NOMINAL	mm [inch]	B	
							ILC21410611	REV A
								FORM FEG036, Rev. C