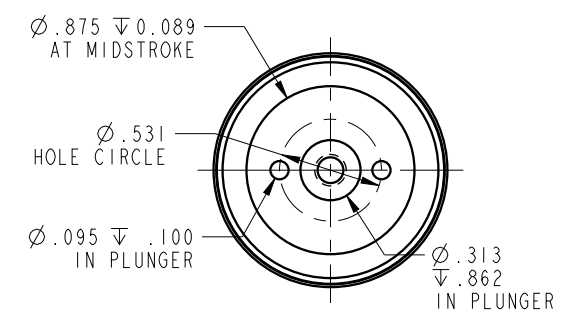
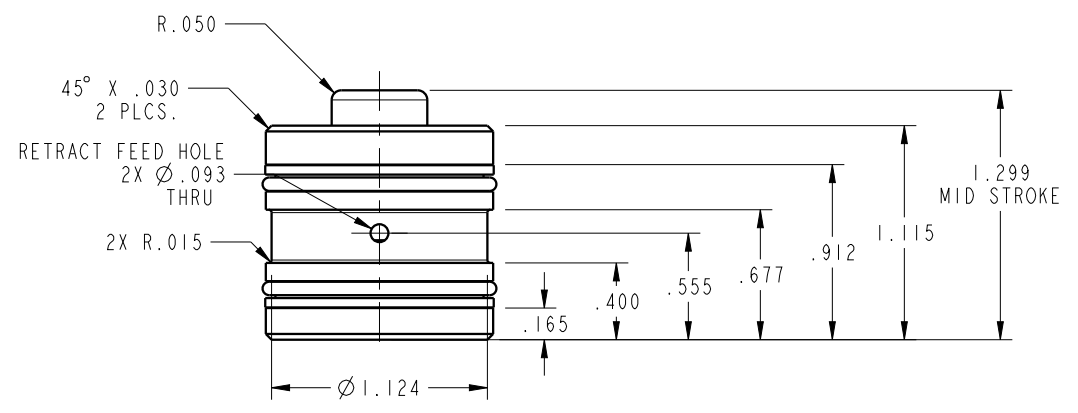


ILC21410900 REV B ECN 4055



NOTE: RETURN SPRING INCLUDED WITH CYLINDER.
 SPRING OMITTED FOR CLARITY

CAD CONTROL DRAWING		 VEKTEK, INC. 1334 E. SIXTH AVE. P.O. BOX 625 EMPORIA, KS. 66801 U.S.A.	

B	4055	RELEASE	MJUST	1/28/20	21410900	B	CYL, CM, PULL, 2000LB
REV	IN ACCORDANCE WITH ECN	EFFECTIVE DATE	REVISED BY	DATE	REFERENCE MODEL	REF REV	8-32 THREAD
DRW BY:	DKC	DRAWING STATUS: Released			TOLERANCES DO NOT APPLY	UNITS	SIZE
DATE:	8/21/14	PRODUCTION APPROVED FOR RELEASED STATUS ONLY			DIMENSIONS ARE NOMINAL	mm [inch]	B
							ILC21410900
							FORM FEG036, Rev. C