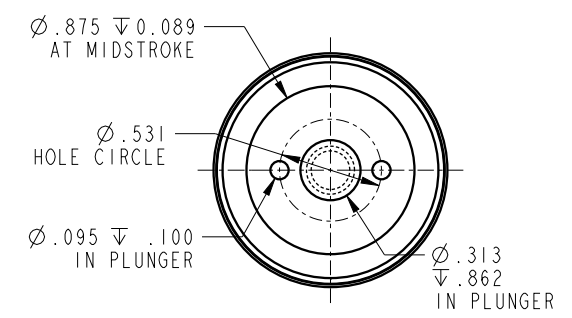
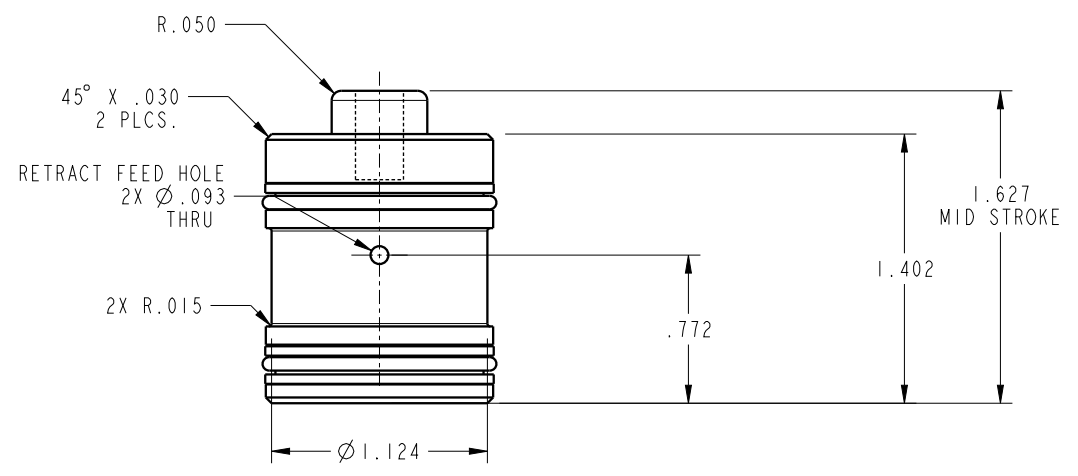


ILC21410911 REV A ECN 5580



NOTE: RETURN SPRING INCLUDED WITH CYLINDER.
 SPRING OMITTED FOR CLARITY

CAD CONTROL DRAWING		 VEKTEK, INC. 1334 E. SIXTH AVE. P.O. BOX 625 EMPORIA, KS. 66801 U.S.A.	
A	5580	RELEASE	BDC
REV	IN ACCORDANCE WITH ECN	EFFECTIVE DATE	REVISED BY
DATE	6/30/25		
TOLERANCES DO NOT APPLY DIMENSIONS ARE NOMINAL	UNITS mm [inch]	SIZE B	ILC21410911 REV A

21410911	A	CYL, CM, PULL, 2000LB
REFERENCE MODEL	REF REV	1/4-20 THREAD
DRAWING STATUS: Released PRODUCTION APPROVED FOR RELEASED STATUS ONLY		