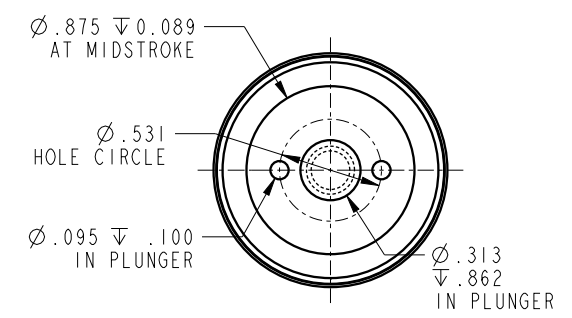
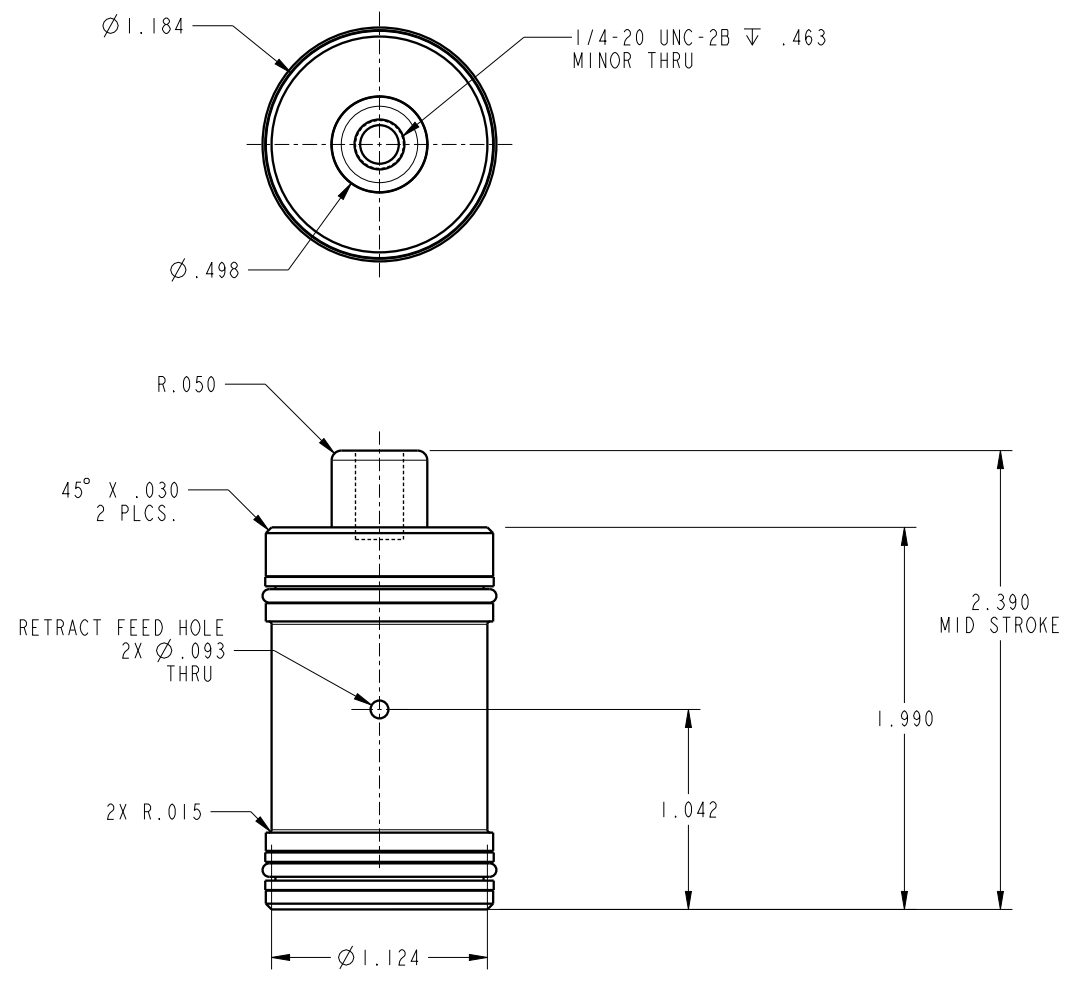



ILC21410921 REV A ECN 5580



NOTE: RETURN SPRING INCLUDED WITH CYLINDER.  
 SPRING OMITTED FOR CLARITY

**CAD CONTROL DRAWING**



VEKTEK, INC.  
 1334 E. SIXTH AVE. P.O. BOX 625  
 EMPORIA, KS. 66801 U.S.A.

A	5580	RELEASE	BDC	6/30/25	21410921	A	CYL, CM, PULL, 2000LB	
REV	IN ACCORDANCE WITH ECN	EFFECTIVE DATE	REVISED BY	DATE	REFERENCE MODEL	REF REV	1/4-20 THREAD	
DRW BY:	BDC	<b>DRAWING STATUS: Released</b>			TOLERANCES DO NOT APPLY	UNITS	SIZE	
DATE:	6/30/25	PRODUCTION APPROVED FOR RELEASED STATUS ONLY			DIMENSIONS ARE NOMINAL	mm [inch]	B	
							ILC21410921	REV A
								FORM FEG036, Rev. C