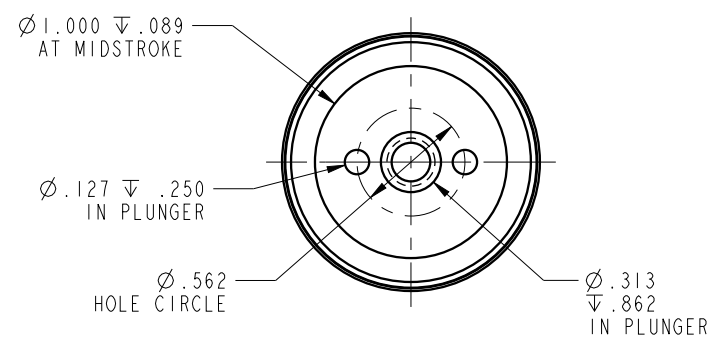
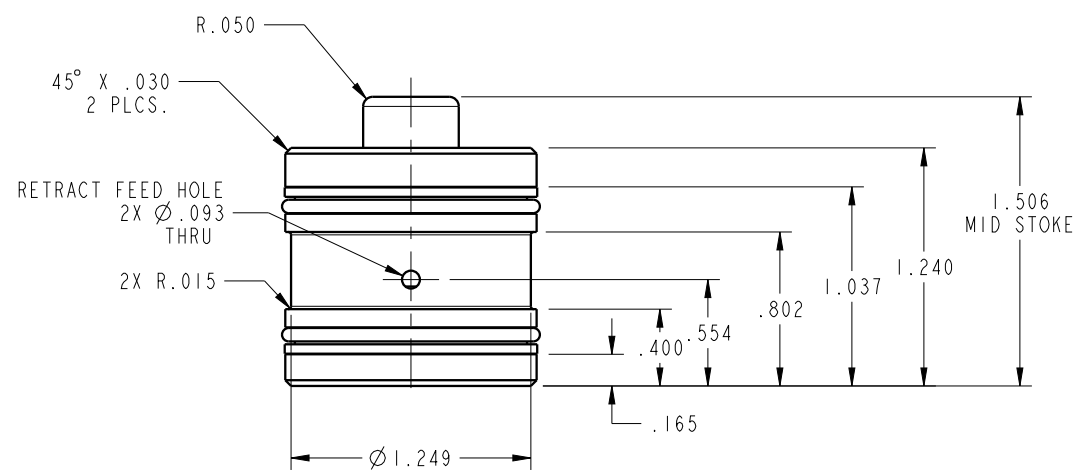


ILC21411100 REV B ECN 4055



NOTE: RETURN SPRING INCLUDED WITH CYLINDER.  
 SPRING OMITTED FOR CLARITY

<b>CAD CONTROL DRAWING</b>		 VEKTEK, INC. 1334 E. SIXTH AVE. P.O. BOX 625 EMPORIA, KS. 66801 U.S.A.

B	4055	RELEASE	MJUST	1/28/20
REV	IN ACCORDANCE WITH ECN	EFFECTIVE DATE	REVISED BY	DATE
DRW BY:	DKC	<b>DRAWING STATUS: Released</b>		
DATE:	8/21/14	PRODUCTION APPROVED FOR RELEASED STATUS ONLY		

21411100	B	CYL, CM, PULL, 2950LB
REFERENCE MODEL	REF REV	1/4-20 THREAD
TOLERANCES DO NOT APPLY DIMENSIONS ARE NOMINAL		SIZE B <b>ILC21411100</b> REV B

FORM FEG036, Rev. B

SHEET 1 OF 1