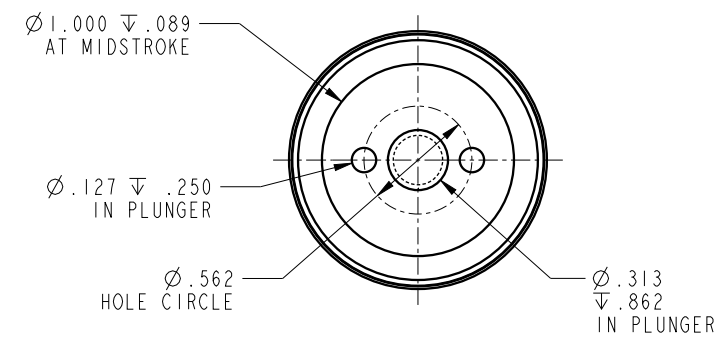
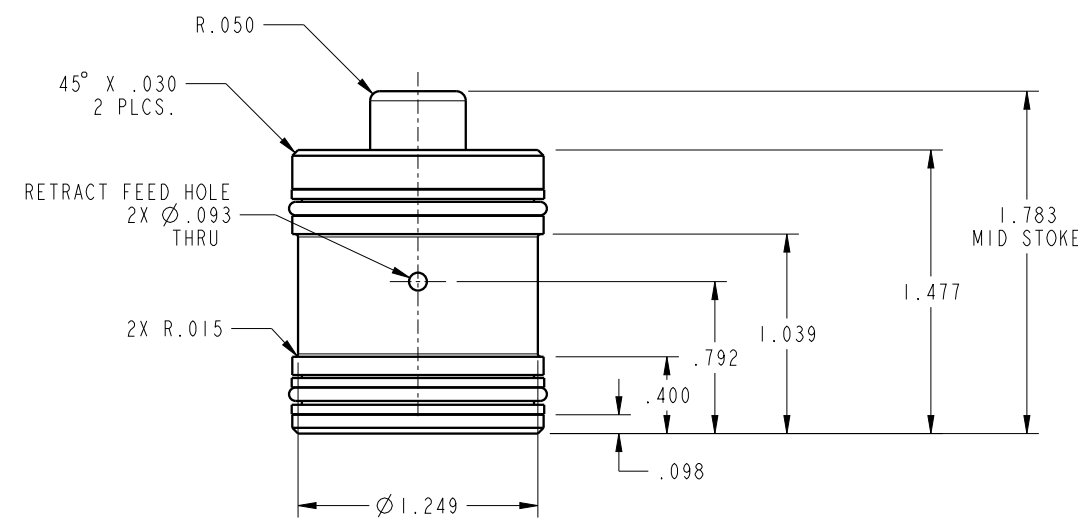


ILC21411111 REV A ECN 5580



NOTE: RETURN SPRING INCLUDED WITH CYLINDER.
 SPRING OMITTED FOR CLARITY

CAD CONTROL DRAWING		 VEKTEK, INC. 1334 E. SIXTH AVE. P.O. BOX 625 EMPORIA, KS. 66801 U.S.A.

A	5580	RELEASE	BDC	6/30/25
REV	IN ACCORDANCE WITH ECN	EFFECTIVE DATE	REVISED BY	DATE
DRW BY:	BDC	DRAWING STATUS: Released		
DATE:	6/30/25	PRODUCTION APPROVED FOR RELEASED STATUS ONLY		

21411111	A	CYL, CM, PULL, 2950LB
REFERENCE MODEL	REF REV	5/16-18 THREAD
TOLERANCES DO NOT APPLY DIMENSIONS ARE NOMINAL		SIZE B
ILC21411111		REV A

FORM FEG036, Rev. B