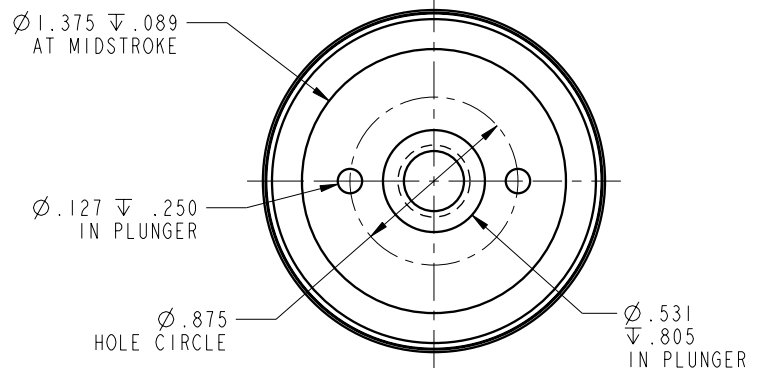
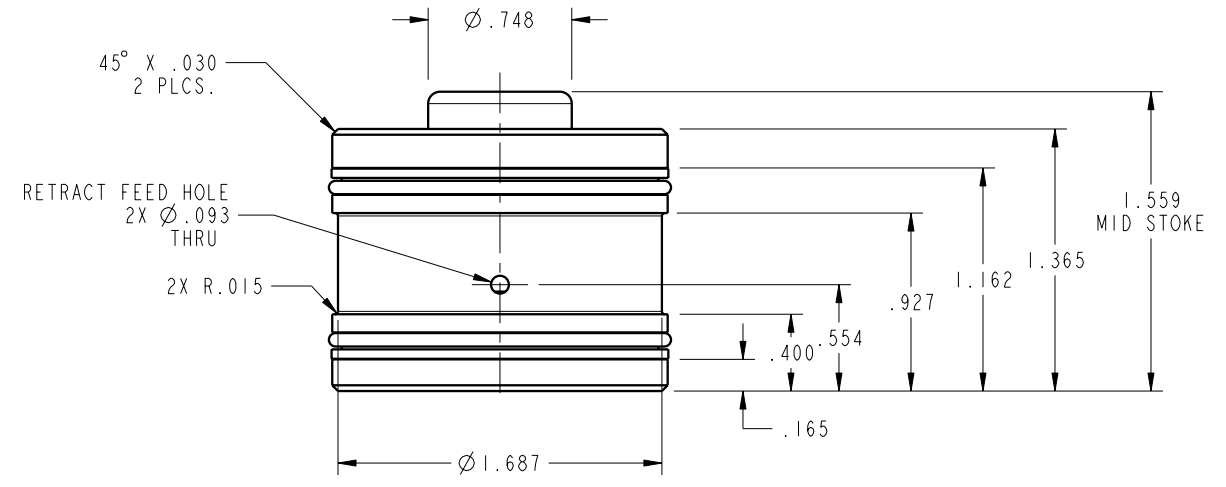


ILC21411300 REV A ECN 2717



NOTE: RETURN SPRING INCLUDED WITH CYLINDER.
SPRING OMITTED FOR CLARITY

CAD CONTROL DRAWING			
		VEKTEK, INC. 1334 E. SIXTH AVE. P.O. BOX 625 EMPORIA, KS. 66801 U.S.A.	
	21411300	A	CYL, CM, PL DN, 5200LB
REV	IN ACCORDANCE WITH ECN	EFFECTIVE DATE	REVISED BY
DATE: 8/21/14			
DRW BY: DKC	DRAWING STATUS: Released		TOLERANCES DO NOT APPLY DIMENSIONS ARE NOMINAL
	PRODUCTION APPROVED FOR RELEASED STATUS ONLY		SIZE B ILC21411300 REV A
			FORM FEG036, Rev. B