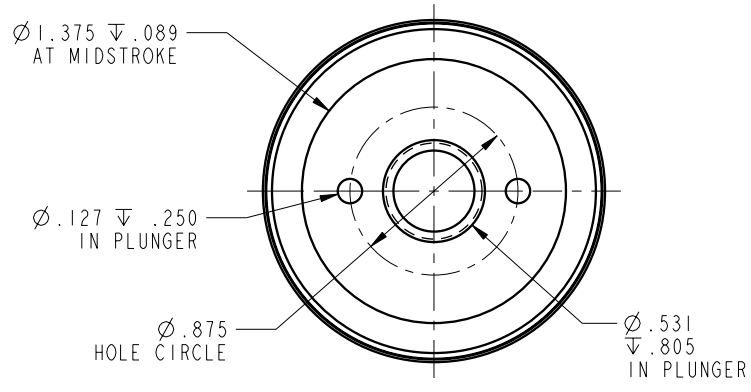
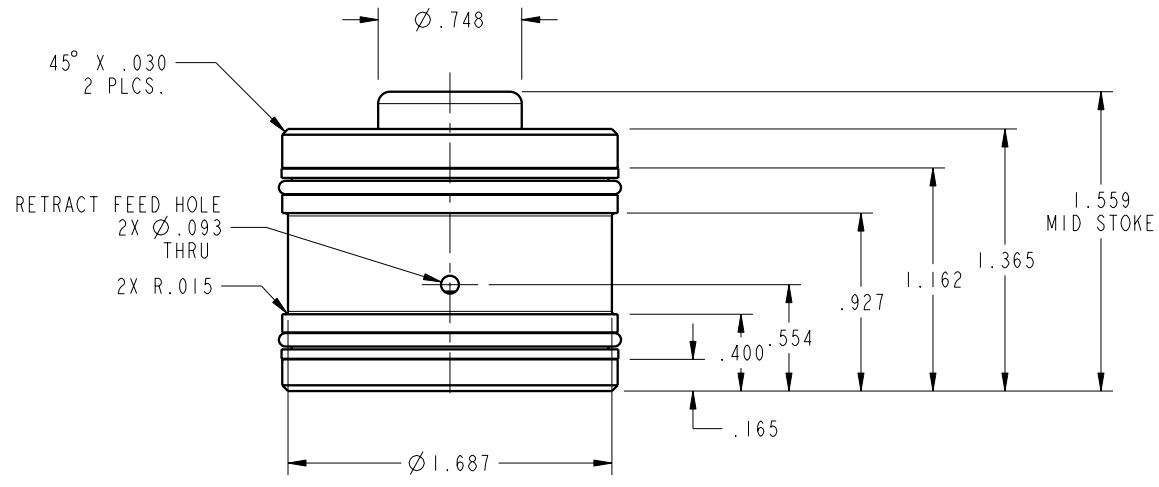


ILC21411301 REV A ECN 2717



NOTE: RETURN SPRING INCLUDED WITH CYLINDER.  
 SPRING OMITTED FOR CLARITY

<b>CAD CONTROL DRAWING</b>				 VEKTEK, INC. 1334 E. SIXTH AVE. P.O. BOX 625 EMPORIA, KS. 66801 U.S.A.	
A	2717	RELEASE	DKC	8/26/14	21411301
REV	IN ACCORDANCE WITH ECN	EFFECTIVE DATE	REVISED BY	DATE	REFERENCE MODEL
REV	DATE: 8/21/14	DRAWING STATUS: <b>Released</b>			REF REV
TOLERANCES DO NOT APPLY DIMENSIONS ARE NOMINAL					SIZE B ILC21411301 REV A

REV	DATE: 8/21/14	PRODUCTION APPROVED FOR RELEASED STATUS ONLY
-----	---------------	--

FORM FEG036, Rev. B