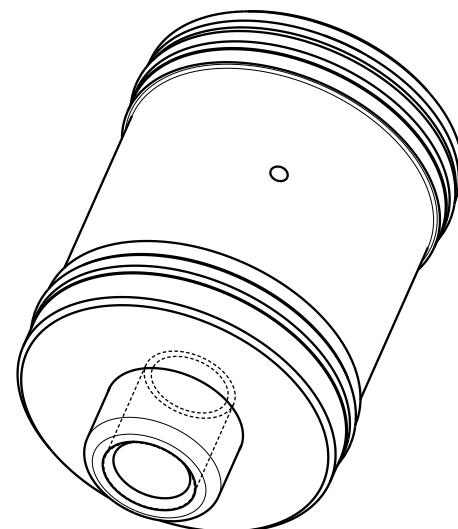
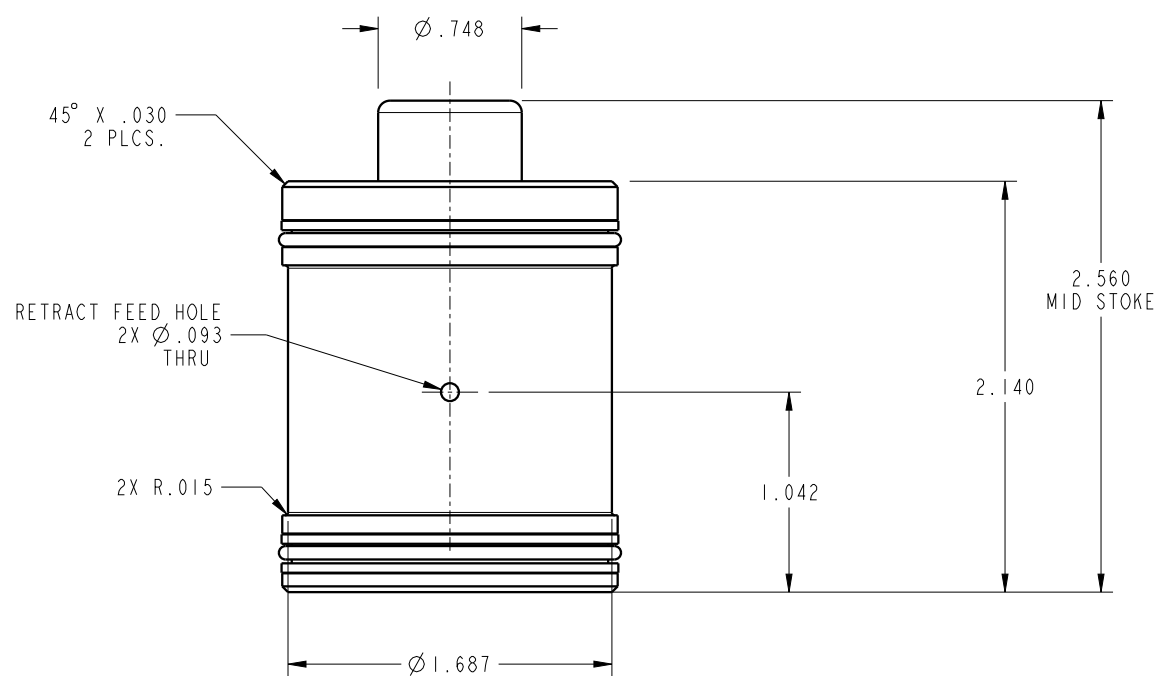


Ø 1.747  
 1/2-13 UNC-2B  $\nabla$  .665  
 MINOR THRU



ILC21411321 REV A ECN 5580



Ø 1.375  $\nabla$  .089  
 AT MIDSTROKE  
 Ø .127  $\nabla$  .250  
 IN PLUNGER  
 Ø .875  
 HOLE CIRCLE  
 Ø .531  $\nabla$  .805  
 IN PLUNGER

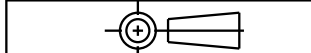
NOTE: RETURN SPRING INCLUDED WITH CYLINDER.  
 SPRING OMITTED FOR CLARITY

CAD CONTROL  
 DRAWING



VEKTEK, INC.  
 1334 E. SIXTH AVE. P.O. BOX 625  
 EMPORIA, KS. 66801 U.S.A.

A	5580	RELEASE	BDC	6/30/25
REV	IN ACCORDANCE WITH ECN	EFFECTIVE DATE	REVISED BY	DATE
DRW BY:	BDC	DRAWING STATUS: Released		
DATE:	6/30/25	PRODUCTION APPROVED FOR RELEASED STATUS ONLY		



21411321 A

CYL, CM, PULL, 5200LB  
 1/2-13 THREAD

TOLERANCES DO NOT APPLY  
 DIMENSIONS ARE NOMINAL

SIZE B ILC21411321 REV A

FORM FEG036, Rev. B