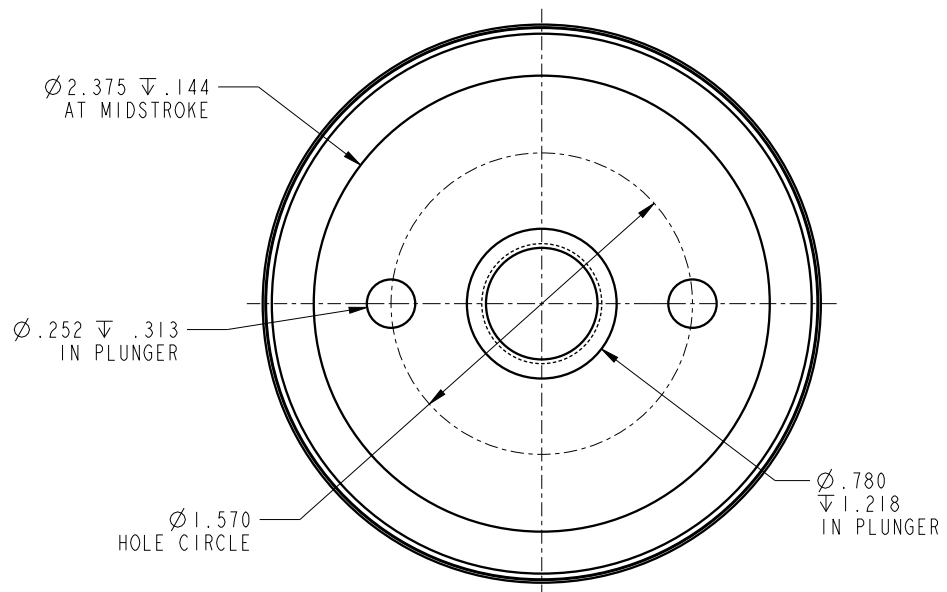
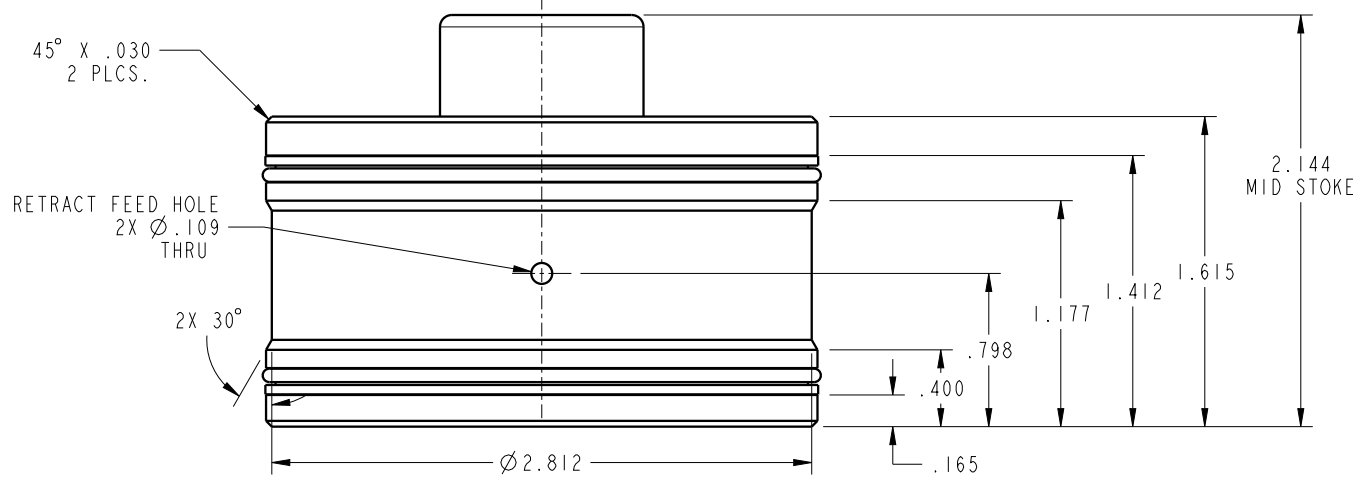


ILC21412100 REV A ECN 2802



NOTE: RETURN SPRING INCLUDED WITH CYLINDER.  
SPRING OMITTED FOR CLARITY

<b>CAD CONTROL DRAWING</b>			
		VEKTEK, INC. 1334 E. SIXTH AVE. P.O. BOX 625 EMPORIA, KS. 66801 U.S.A.	
21412100	A	CYL, CM, PULL, 17100LB	
REFERENCE MODEL	REF REV	5/8-11 THREAD	
TOLERANCES DO NOT APPLY DIMENSIONS ARE NOMINAL		SIZE B	ILC21412100 REV A

A	2802	RELEASE	DKC	3/3/15
REV	IN ACCORDANCE WITH ECN	EFFECTIVE DATE	REVISED BY	DATE
DRW BY:	DKC	<b>DRAWING STATUS: Released</b>		
DATE:	8/21/14	PRODUCTION APPROVED FOR RELEASED STATUS ONLY		