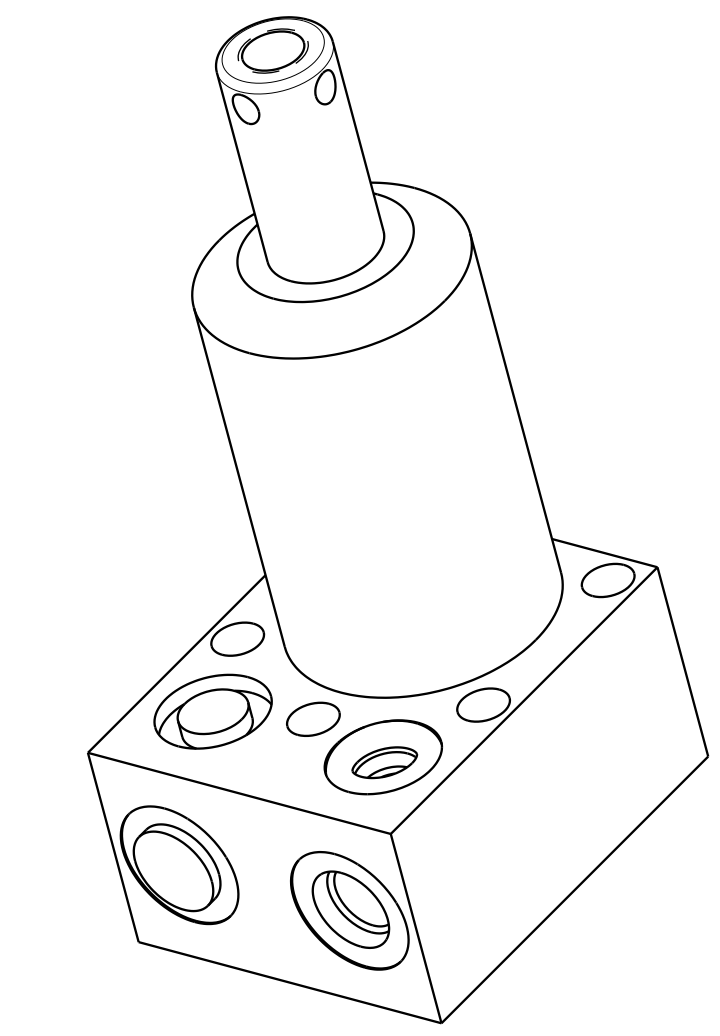
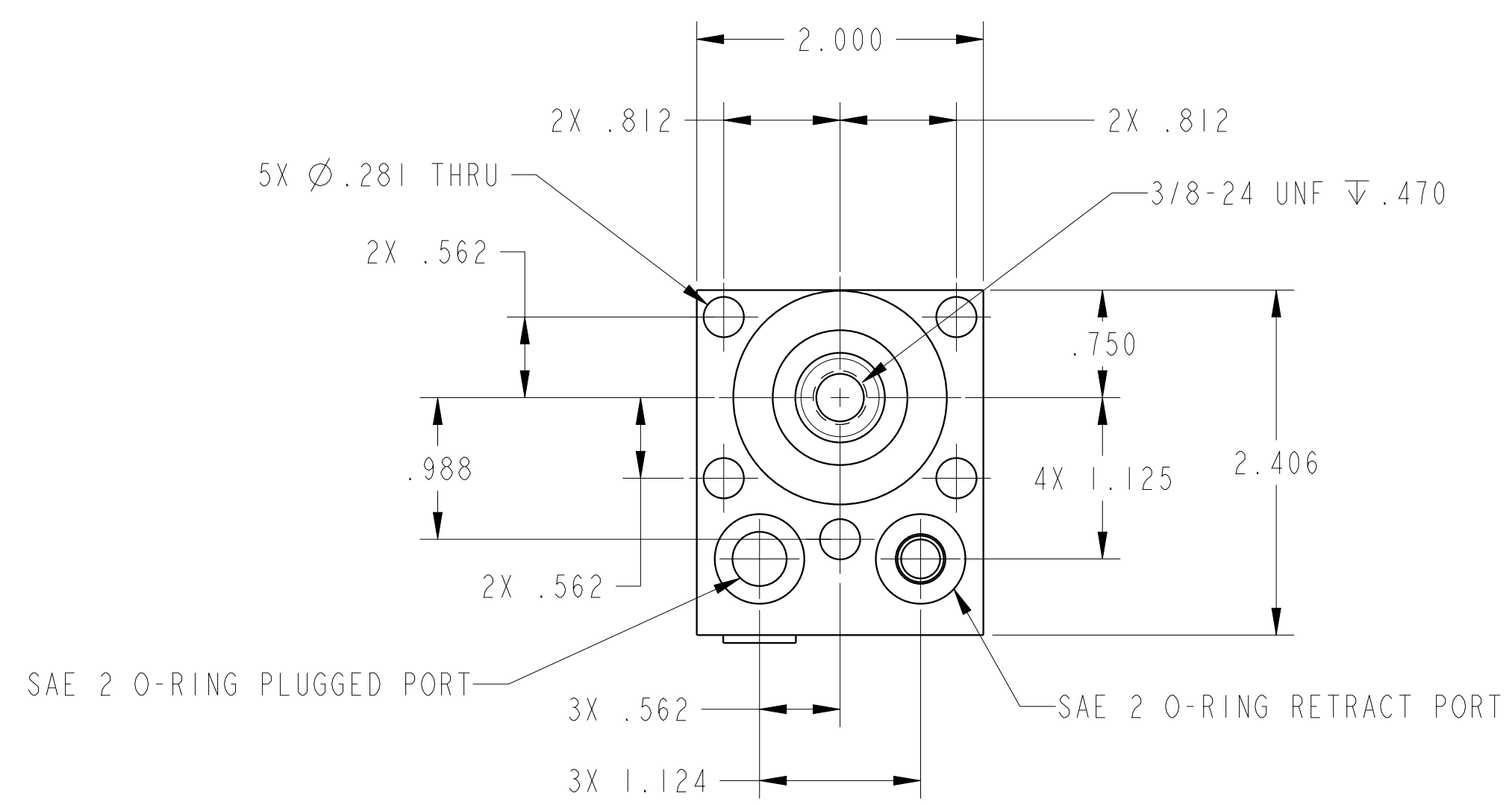


1

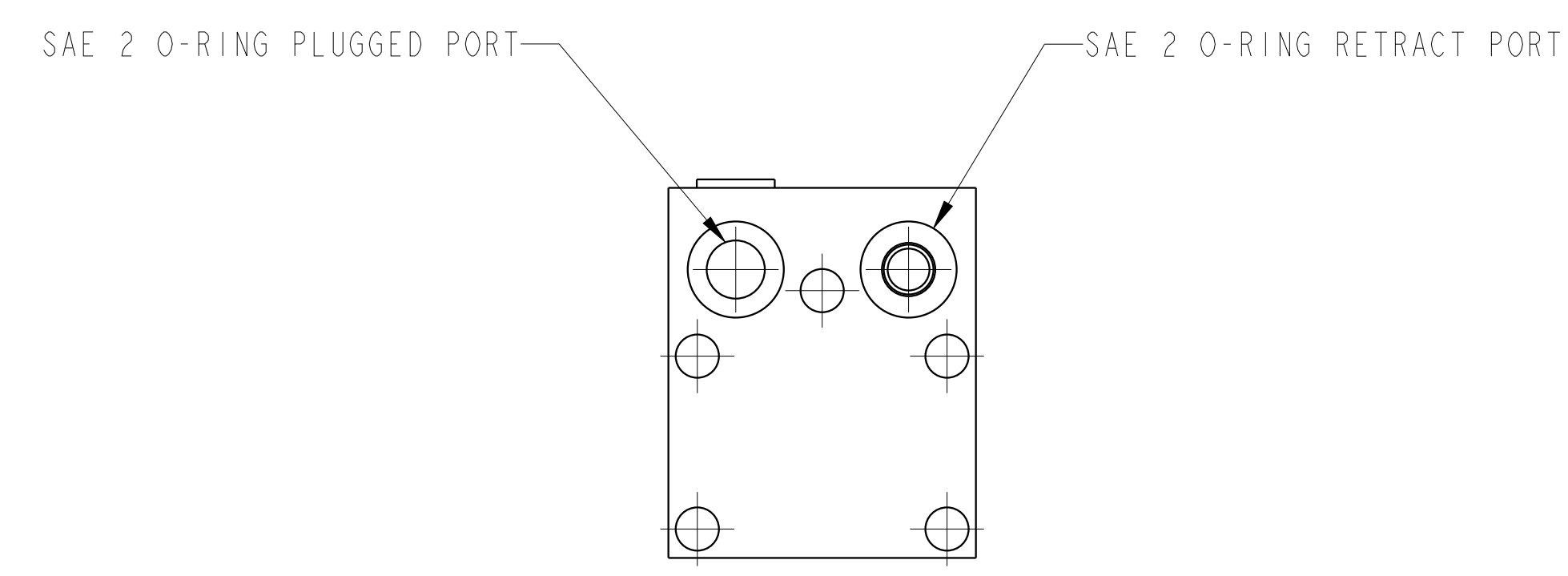
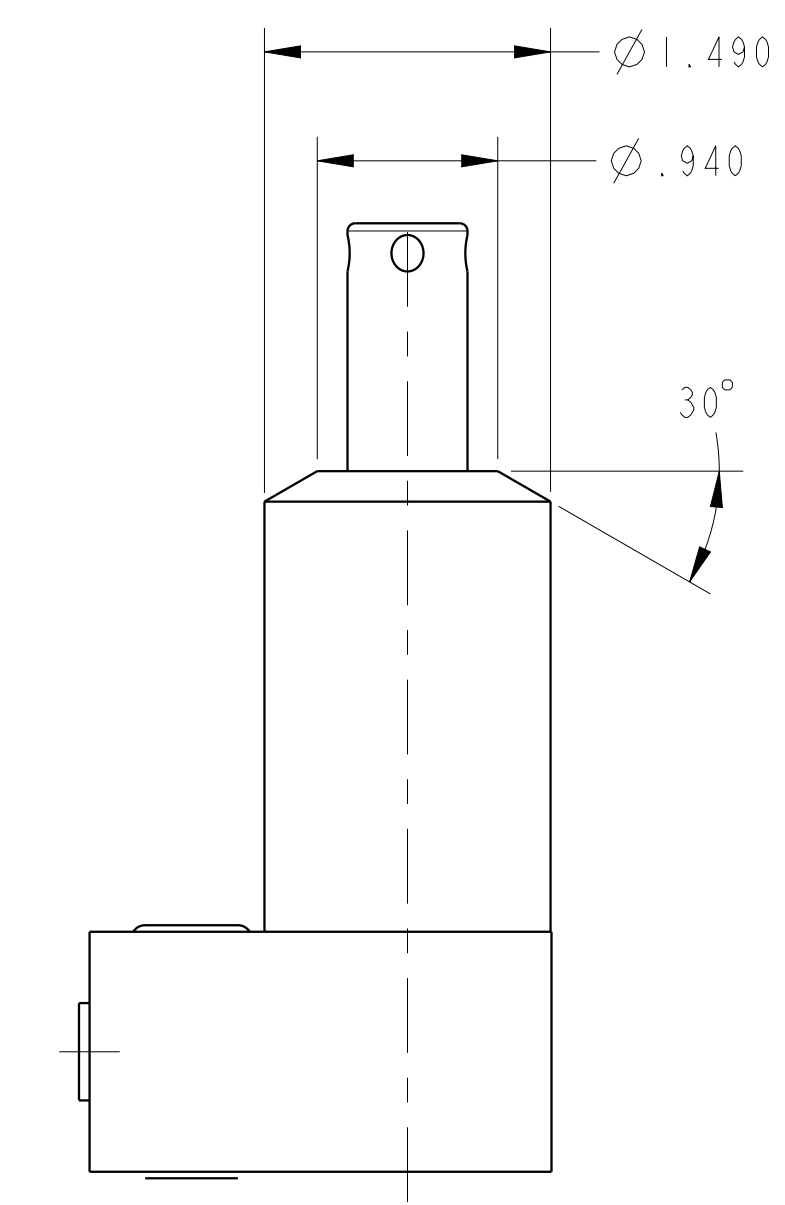
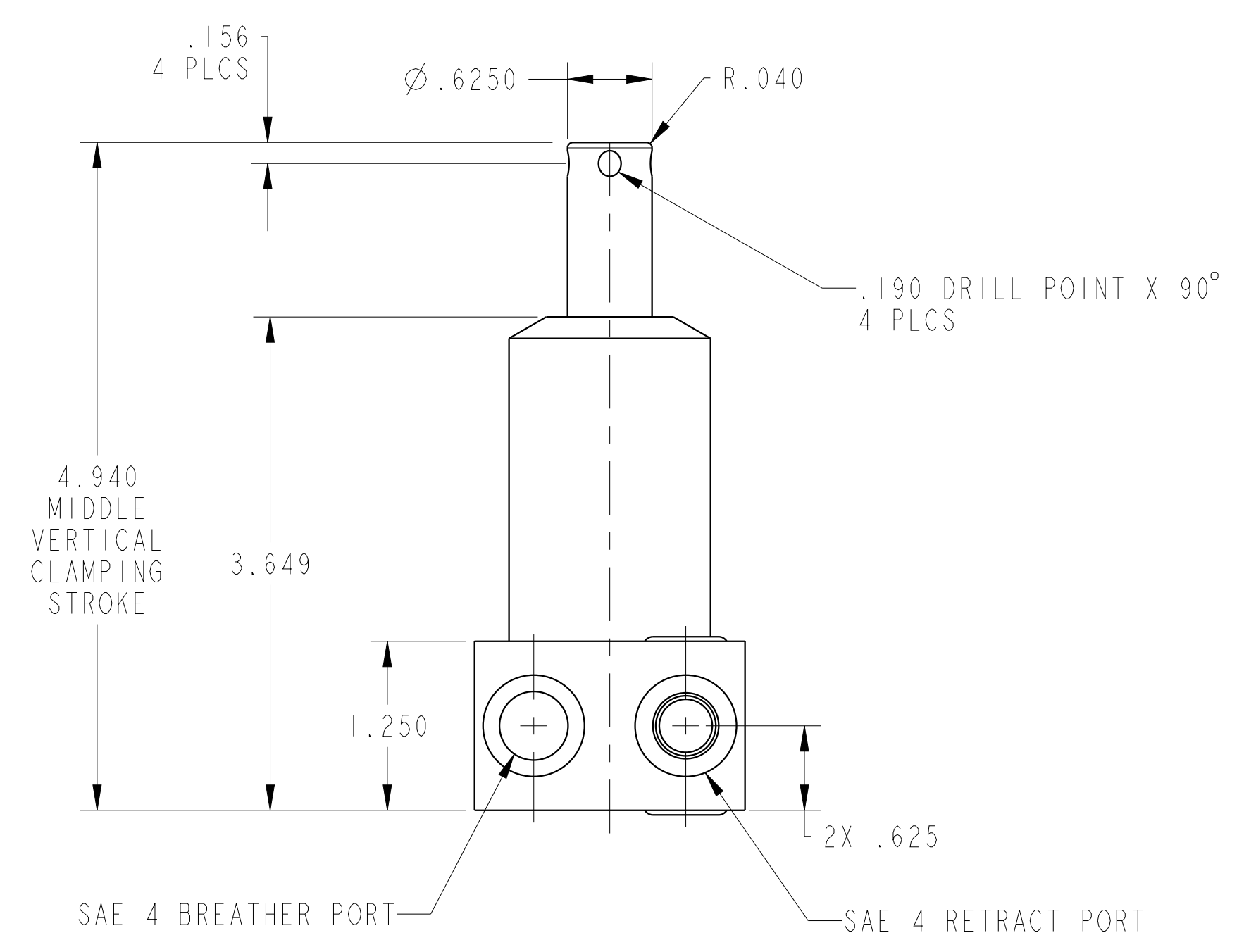
2

3


4



ILC25210902 REV A ECN4448



CAD CONTROL DRAWING



VEKTEK, INC.
1334 E. SIXTH AVE. P.O. BOX 625
EMPORIA, KS. 66801 U.S.A.

A	4448	RELEASE	ALS	5/18/21	25210902	A	CYL, PULL, BF, 1400
REV	IN ACCORDANCE WITH ECN	EFFECTIVE DATE	REVISED BY	DATE	REFERENCE MODEL	REF REV	---
DRW BY:	ALS	DRAWING STATUS: Released			TOLERANCES DO NOT APPLY DIMENSIONS ARE NOMINAL		SIZE D
DATE:	5/19/21	PRODUCTION APPROVED FOR RELEASED STATUS ONLY			ILC25210902		REV A

2

3

4

SHEET 1 OF 1