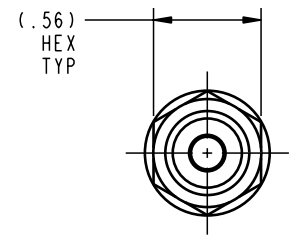
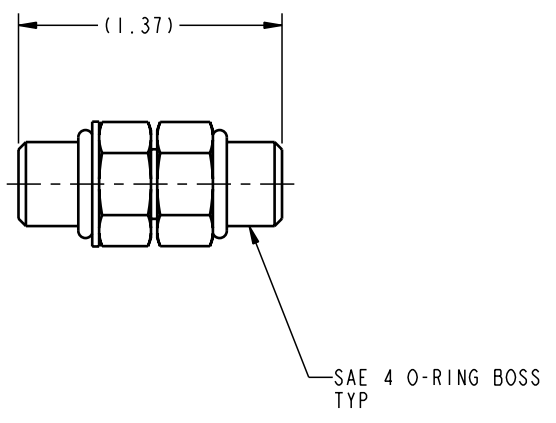



ILC30001144 REV A ECN 1371



<b>CAD CONTROL DRAWING</b>				 VEKTEK, INC. 1334 E. SIXTH AVE. P.O. BOX 625 EMPORIA, KS. 66801 U.S.A.			
A	1371	RELEASE	K. ROEMER	08-11-05	30001144	C	FITTING, UNION, SAE 4, MALE
REV	IN ACCORDANCE WITH ECN	EFFECTIVE DATE	REVISED BY	DATE	REFERENCE MODEL	REF REV	*****
DRW BY:	K. ROEMER	DRAWING STATUS: <b>Released</b>			TOLERANCES DO NOT APPLY		SIZE
DATE:	08-11-05	PRODUCTION APPROVED FOR RELEASED STATUS ONLY			DIMENSIONS ARE NOMINAL		B
						ILC30001144	REV A
						FORM FEG036, Rev. A	