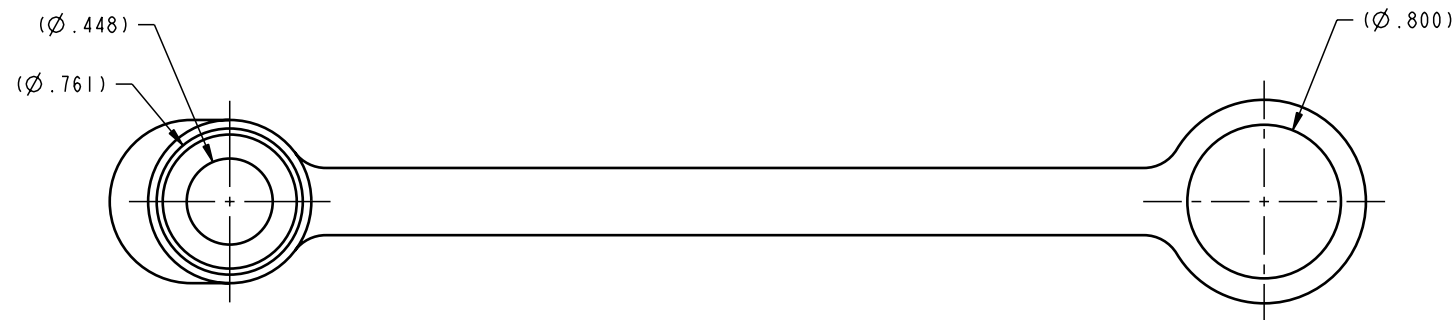
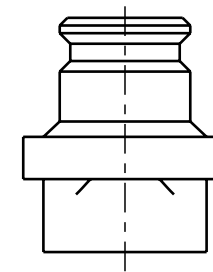
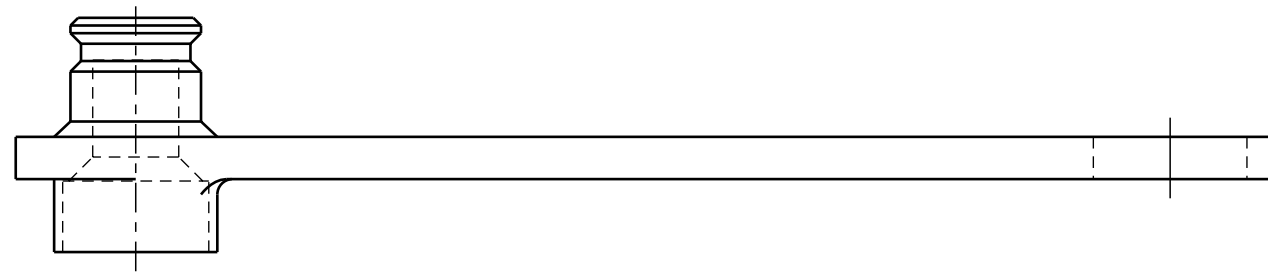




ILC30719706 REV A ECN 1373



CAD CONTROL DRAWING		 VEKTEK, INC. 1334 E. SIXTH AVE. P.O. BOX 625 EMPORIA, KS. 66801 U.S.A.	
			

A	1373	RELEASE	K. ROEMER	08-16-05	30719706	D	COVER, DUST, SAE 6, OD
REV	IN ACCORDANCE WITH ECN	EFFECTIVE DATE	REVISED BY	DATE	REFERENCE MODEL	REF REV	*****
DRW BY:	K. ROEMER	DRAWING STATUS: Released			TOLERANCES DO NOT APPLY DIMENSIONS ARE NOMINAL		SIZE B
DATE:	08-16-05	PRODUCTION APPROVED FOR RELEASED STATUS ONLY			ILC30719706		REV A

FORM FEG036, Rev. A

SHEET 1 OF 1