

1

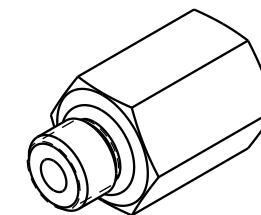
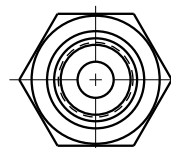
2

3

4

D

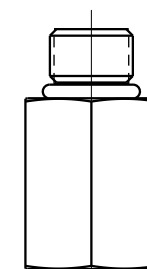
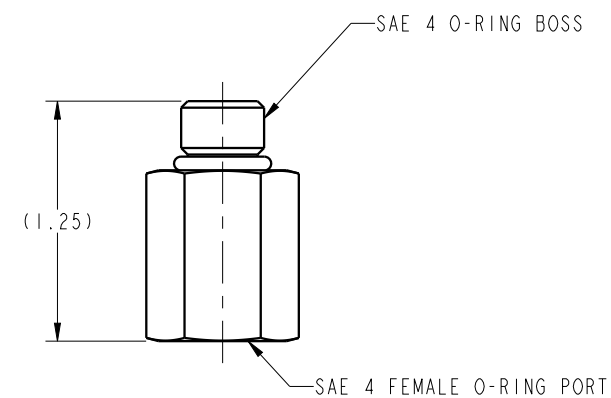
D



ILC30791244 REV A ECN 2791

C

C

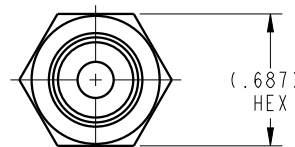


B

B

A

A



CAD CONTROL DRAWING	
	VEKTEK, INC. 1334 E. SIXTH AVE. P.O. BOX 625 EMPORIA, KS. 66801 U.S.A.

A	2791	RELEASE	MAJ	02-03-15	30791244	A	EXTENDER, SAE 4
REV	IN ACCORDANCE WITH ECN	EFFECTIVE DATE	REVISED BY	DATE	REFERENCE MODEL	REF REV	
DRW BY:	MAJ	DRAWING STATUS: Released			TOLERANCES DO NOT APPLY	SIZE	ILC30791244 REV A
DATE:	2/4/15	PRODUCTION APPROVED FOR RELEASED STATUS ONLY			DIMENSIONS ARE NOMINAL	B	

1

2

3

4

FORM FEG036, Rev. B

SHEET 1 OF 1