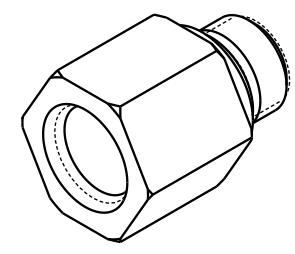


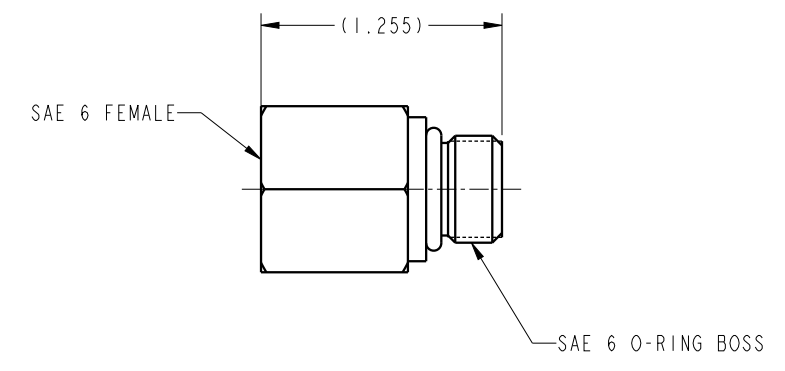
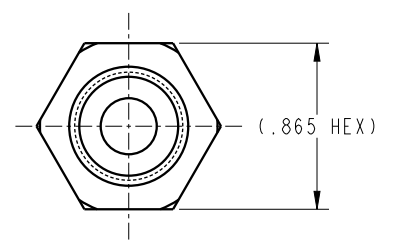
1 2 3 4

D  
C  
B  
A

D  
C  
B  
A



ILC30791266 REV A ECN 3190



<b>CAD CONTROL DRAWING</b>		
	VEKTEK, INC. 1334 E. SIXTH AVE. P.O. BOX 625 EMPORIA, KS. 66801 U.S.A.	

A	5147	RELEASE	RLK	8/6/23	30791266	A	FITTING, SAE 6, MALE- FEMALE
REV	IN ACCORDANCE WITH ECN	EFFECTIVE DATE	REVISED BY	DATE	REFERENCE MODEL	REF REV	
DRW BY:	MAJ	<b>DRAWING STATUS: Released</b>			TOLERANCES DO NOT APPLY	SIZE	ILC30791266 REV A
DATE:	2-10-17	PRODUCTION APPROVED FOR RELEASED STATUS ONLY			DIMENSIONS ARE NOMINAL	B	

FORM FEG036, Rev. B

SHEET 1 OF 1