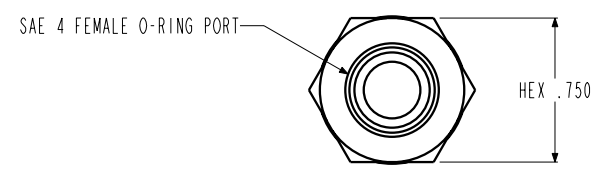
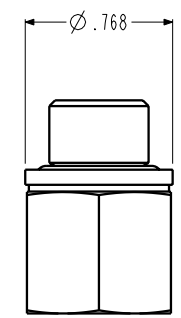
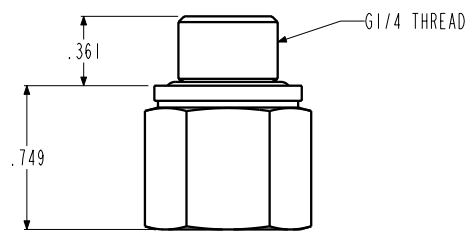

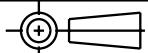


ILC30878264 REV A ECN 2730



<b>CAD CONTROL DRAWING</b>		 VEKTEK, INC. 1334 E. SIXTH AVE. P.O. BOX 625 EMPORIA, KS. 66801 U.S.A.	
			

A	2730	RELEASE	JDW	09/22/14	30878264	B	FITTING, ADAPTER, G1/4M - SAE 4 FEM
REV	IN ACCORDANCE WITH ECN	EFFECTIVE DATE	REVISED BY	DATE	REFERENCE MODEL	REF REV	
DRW BY:	JDW	<b>DRAWING STATUS: Released</b>			TOLERANCES DO NOT APPLY DIMENSIONS ARE NOMINAL		SIZE B
DATE:	09/22/14	PRODUCTION APPROVED FOR RELEASED STATUS ONLY			ILC30878264		REV A

FORM FEG036, Rev. B