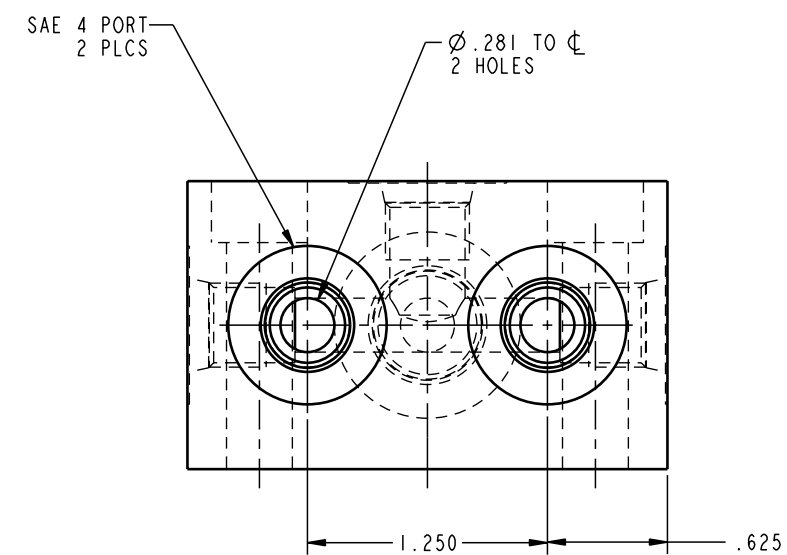
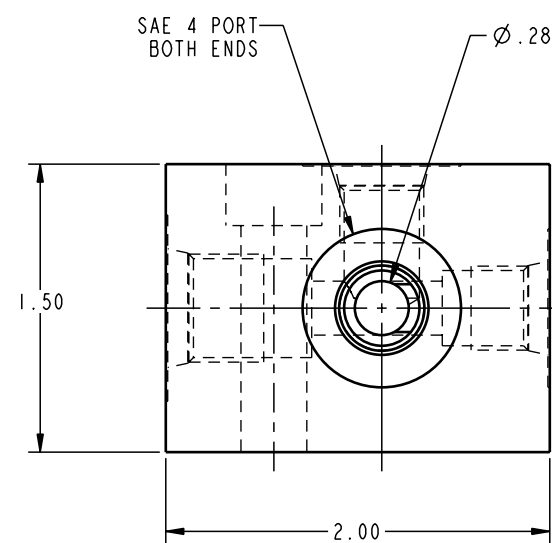
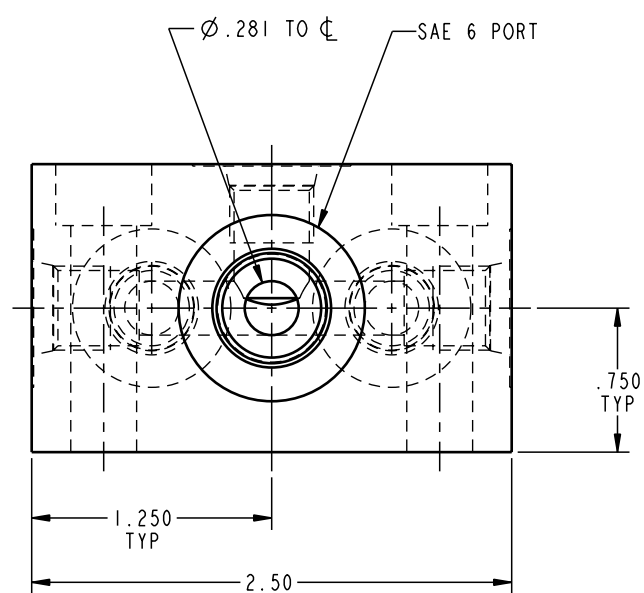


ILC31126424 REV A ECN 773



CAD CONTROL
DRAWING



VEKTEK, INC.
1334 E. SIXTH AVE. P.O. BOX 625
EMPORIA, KS. 66801 U.S.A.

A	773	RELEASE	K. ROEMER	04-28-05	31126424	E	MANIFOLD, JCT, SAE 6-4
REV	IN ACCORDANCE WITH ECN	EFFECTIVE DATE	REVISED BY	DATE	REFERENCE MODEL	REF REV	
DRW BY:	K. ROEMER	DRAWING STATUS: Released			TOLERANCES DO NOT APPLY DIMENSIONS ARE NOMINAL		SIZE B
DATE:	11-20-02	PRODUCTION APPROVED FOR RELEASED STATUS ONLY			ILC31126424		REV A

FORM FEG036, Rev. A

SHEET 1 OF 1