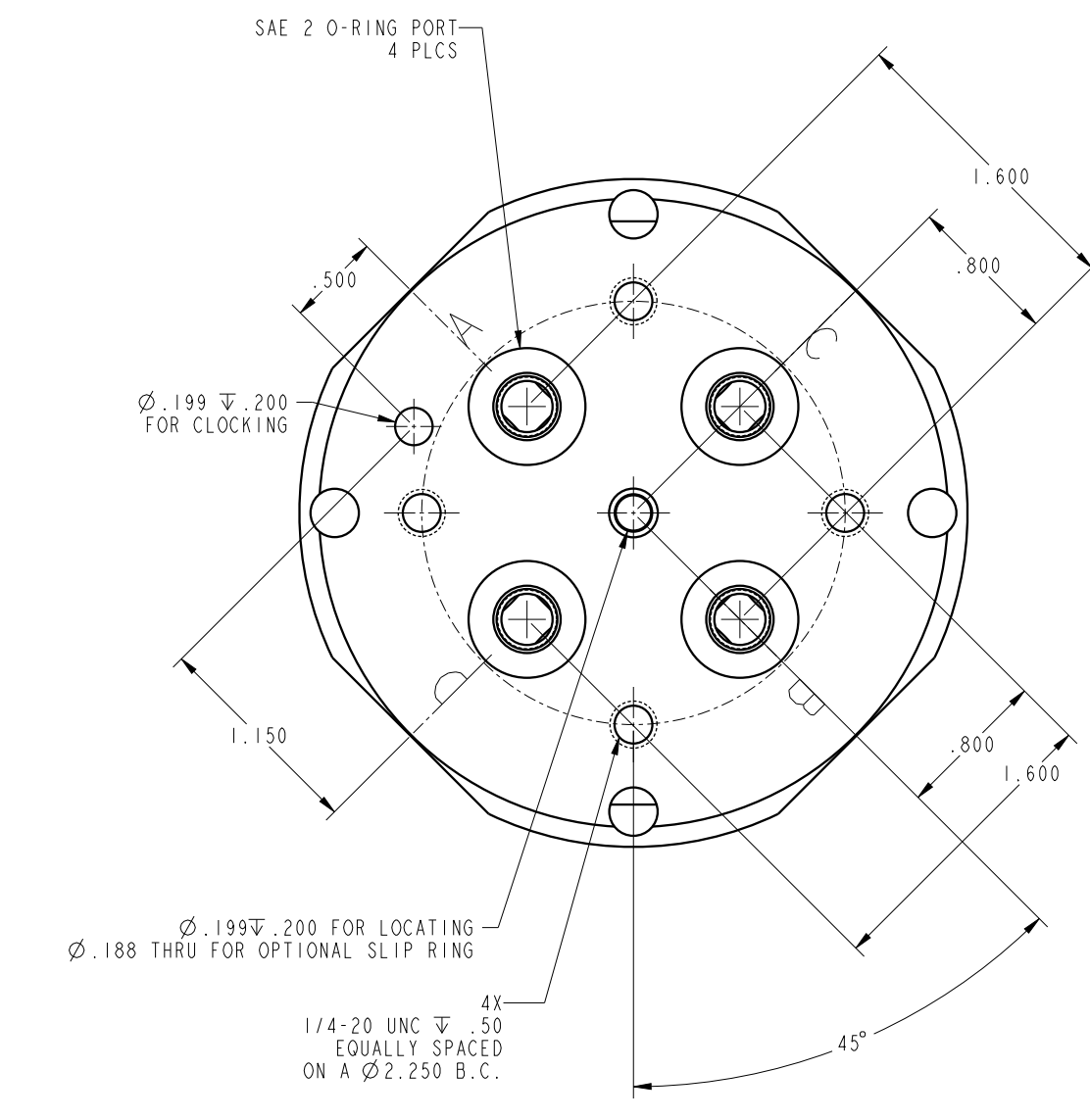
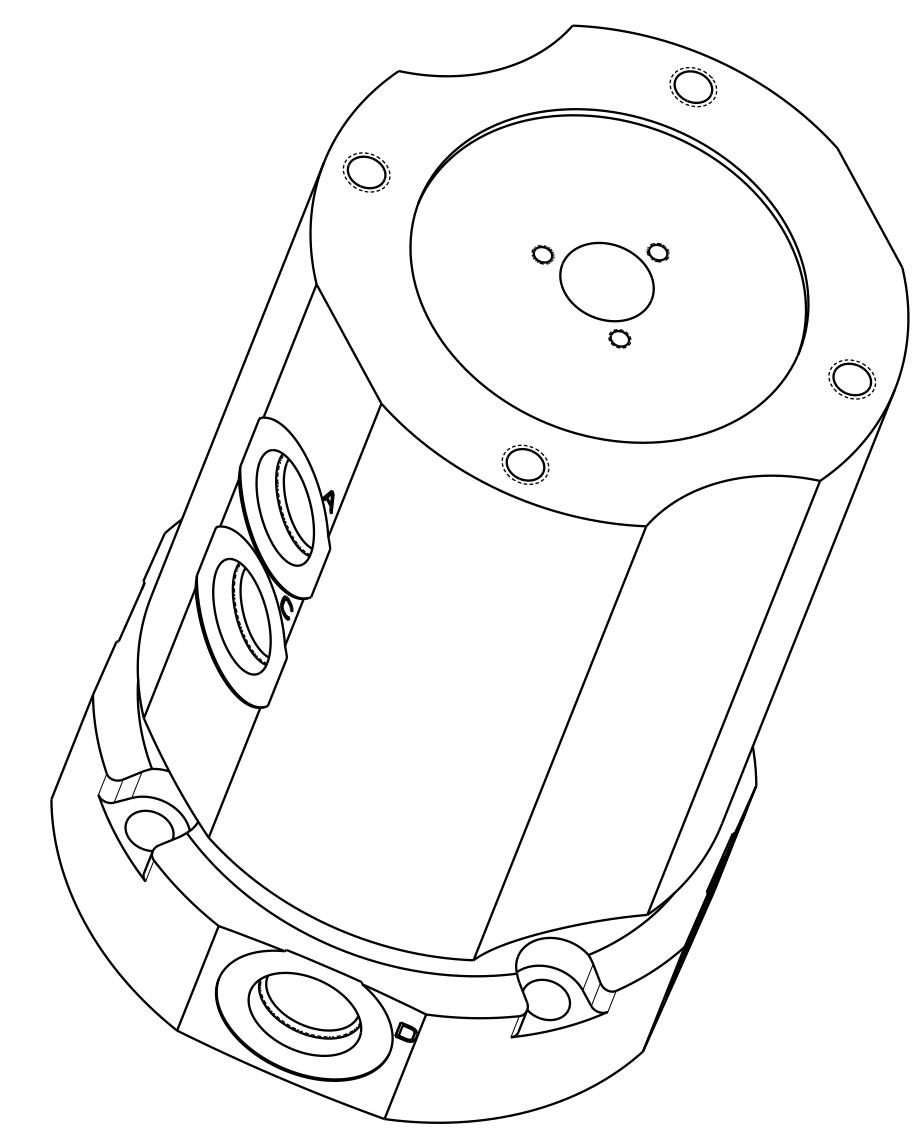
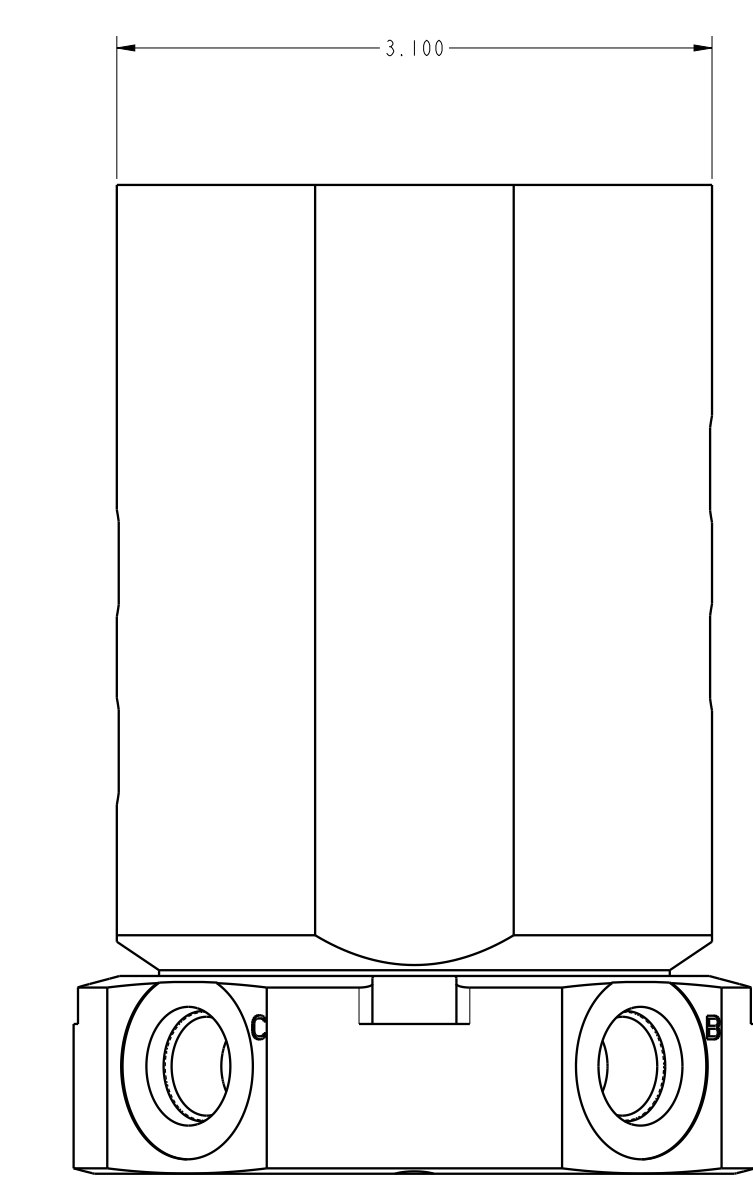
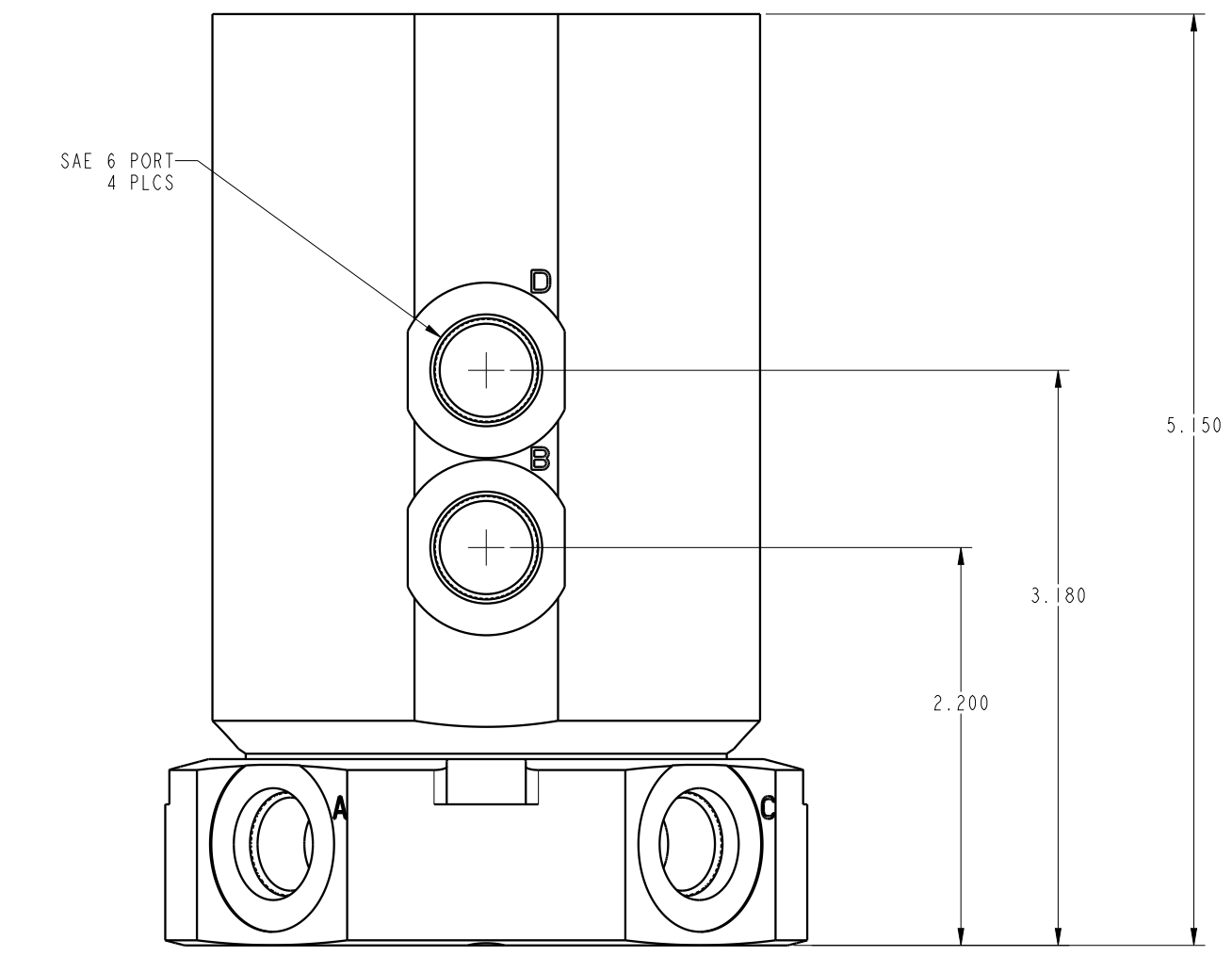
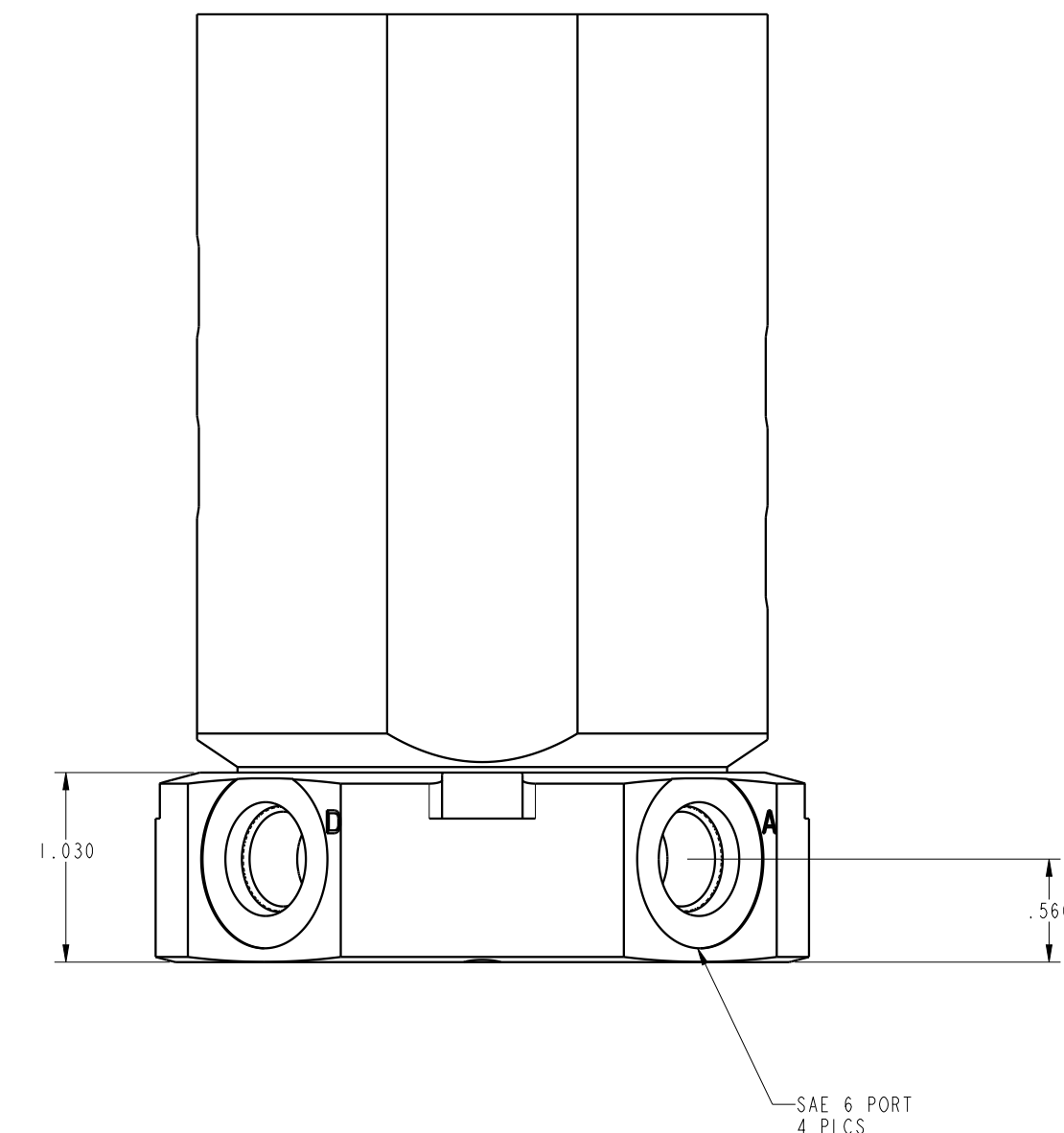
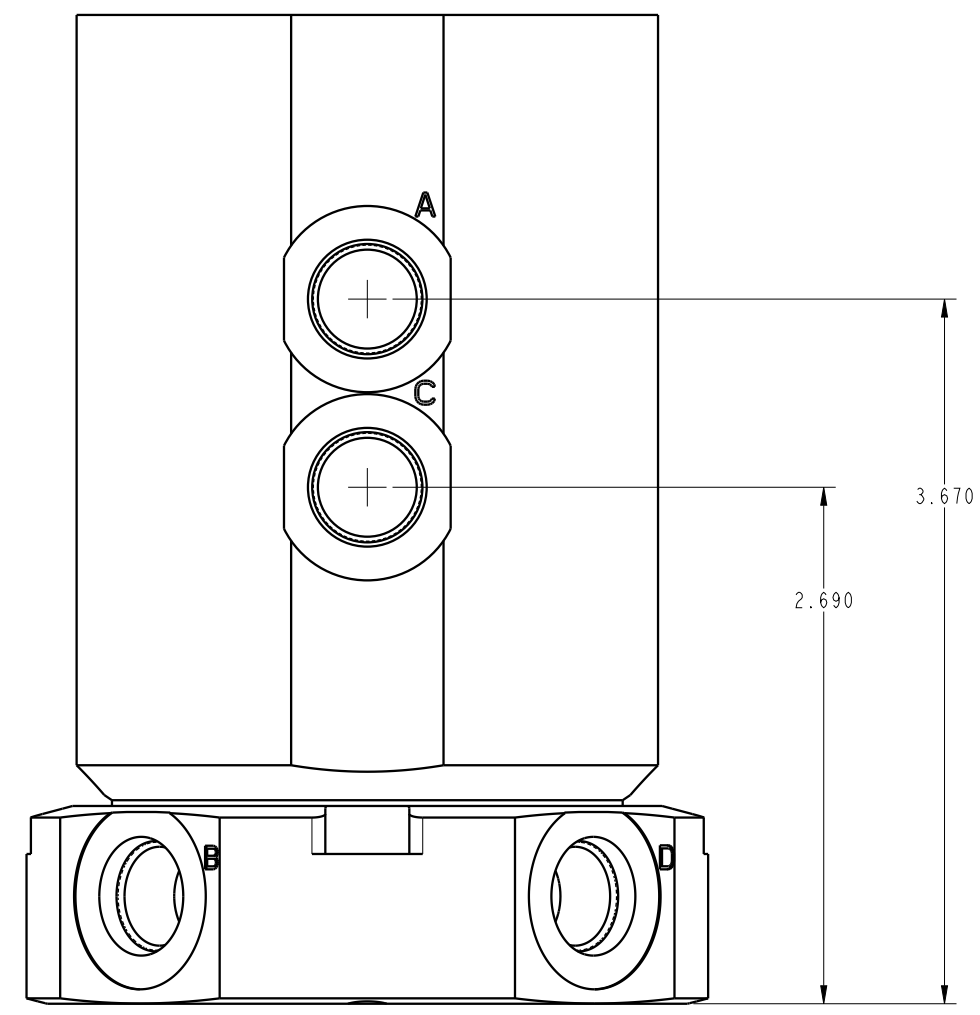
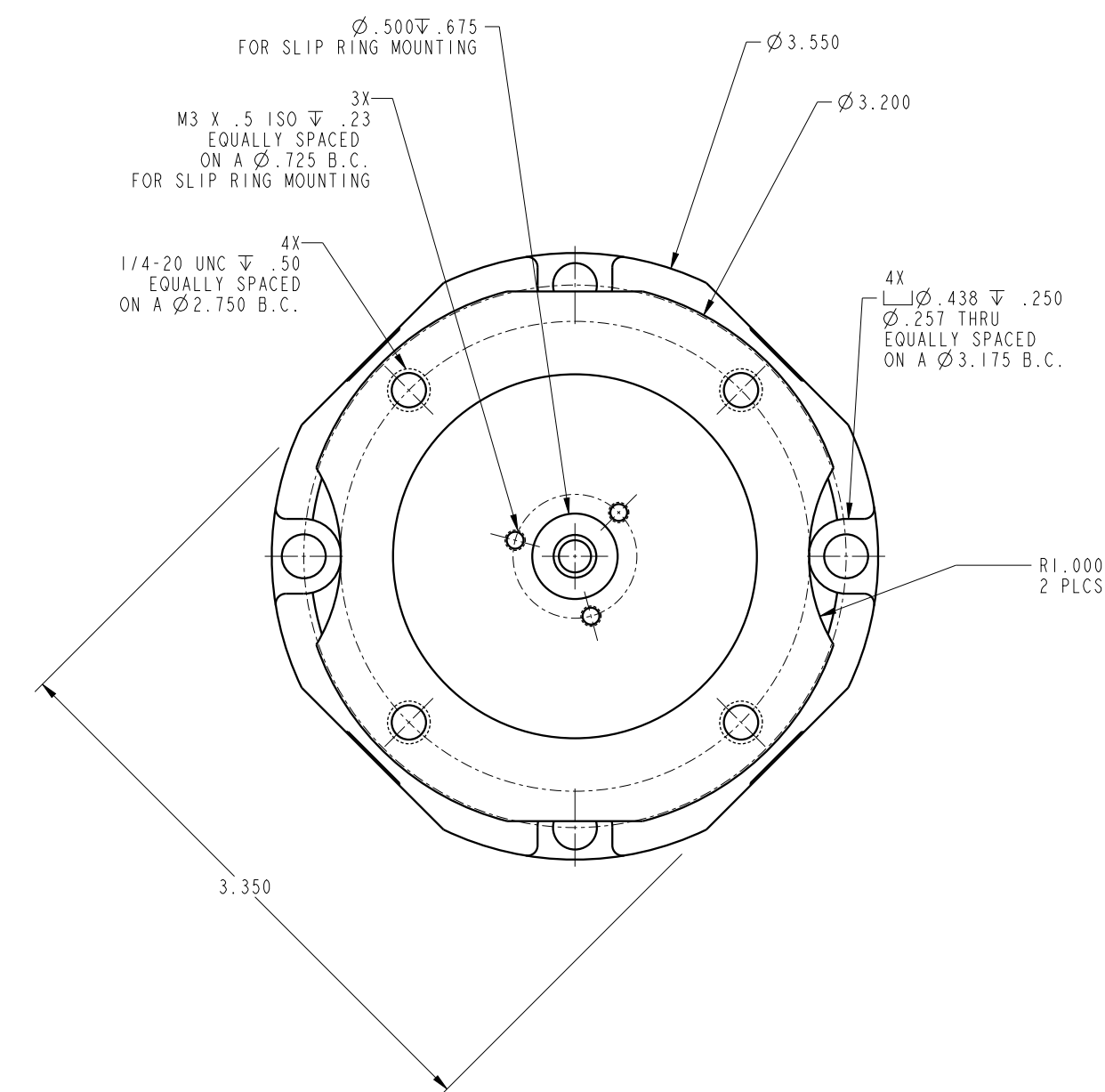


1

2

3

4



ILC32426402 REV A ECN 5297

CAD CONTROL DRAWING



A	5297	RELEASE	NPETERS	4/20/24
REV	IN ACCORDANCE WITH ECN	EFFECTIVE DATE	REVISED BY	DATE
DRW BY:	NPETERS	DRAWING STATUS: Released		
DATE:	4/20/24	PRODUCTION APPROVED FOR RELEASED STATUS ONLY		

	32-4264-02	A	ILC, SUPER UNION, QP, SAE 6
	REFERENCE MODEL	REF REV	*****
	TOLERANCES DO NOT APPLY DIMENSIONS ARE NOMINAL		SIZE D

ILC32426402	REV A
FORM FEG036, Rev. B	