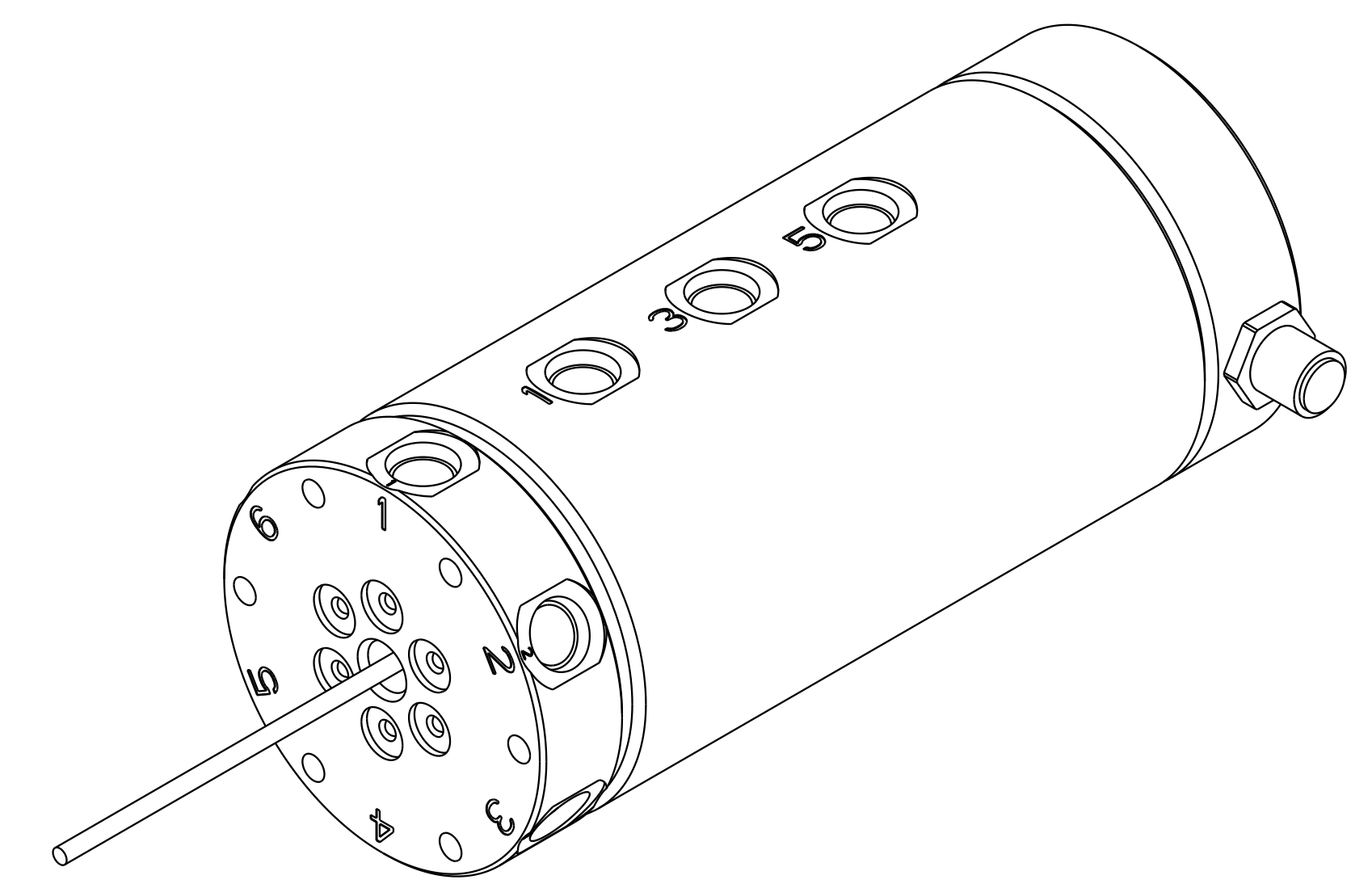
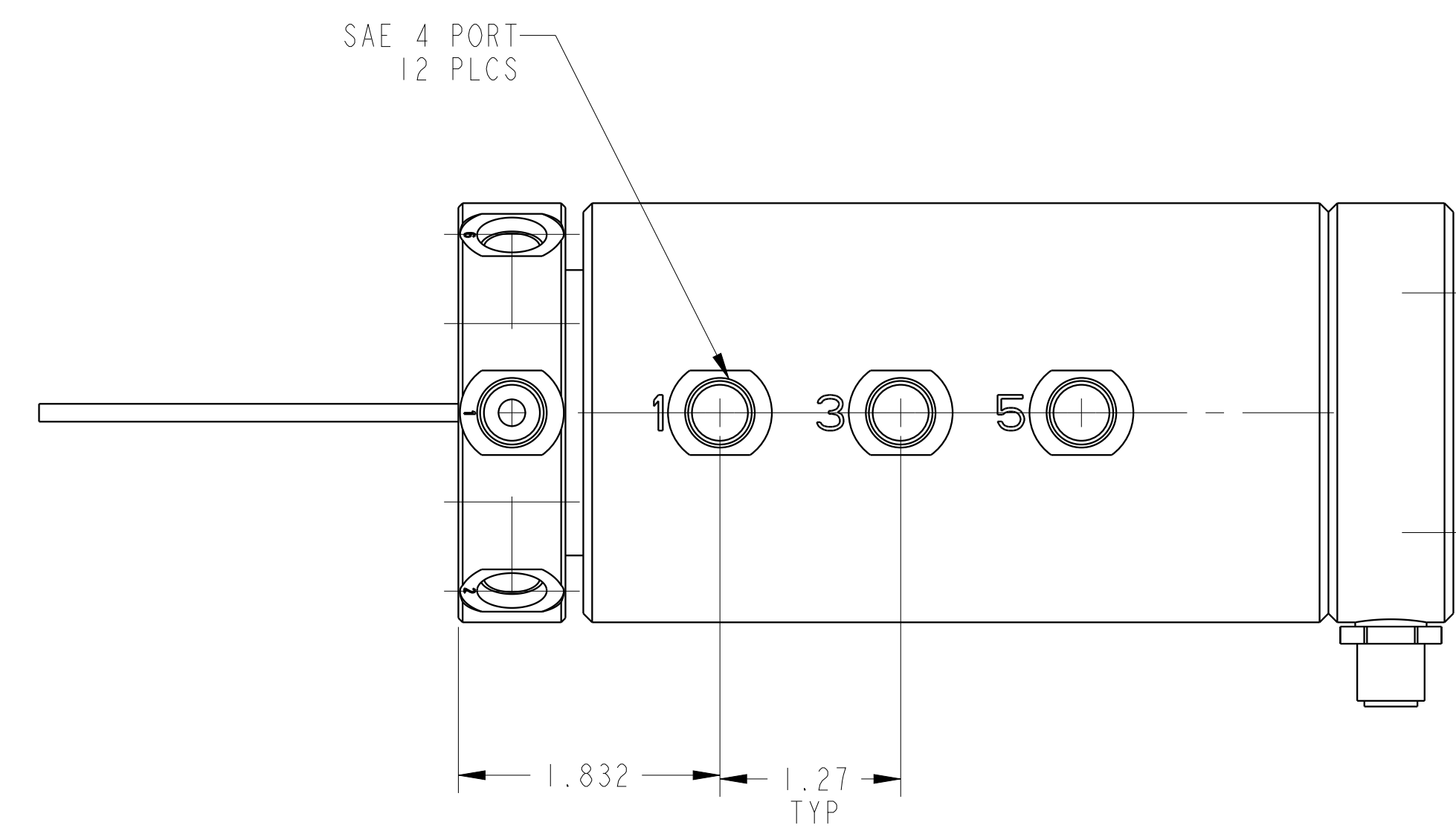


1

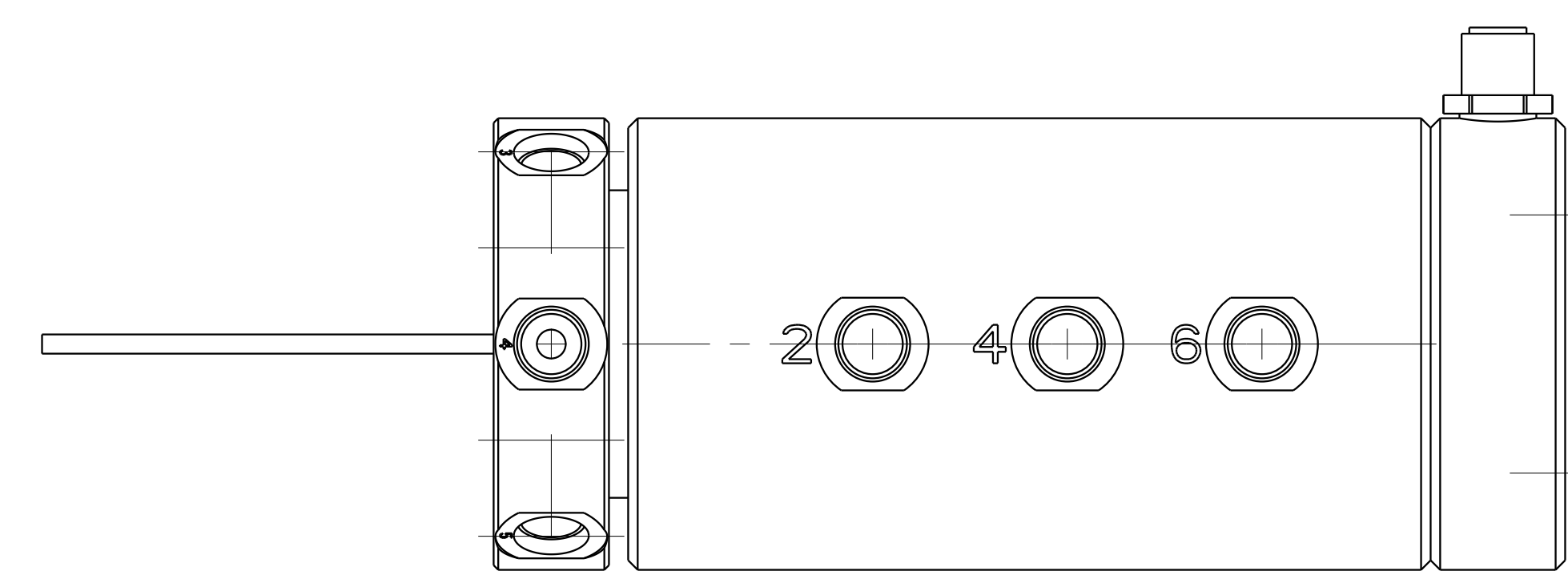
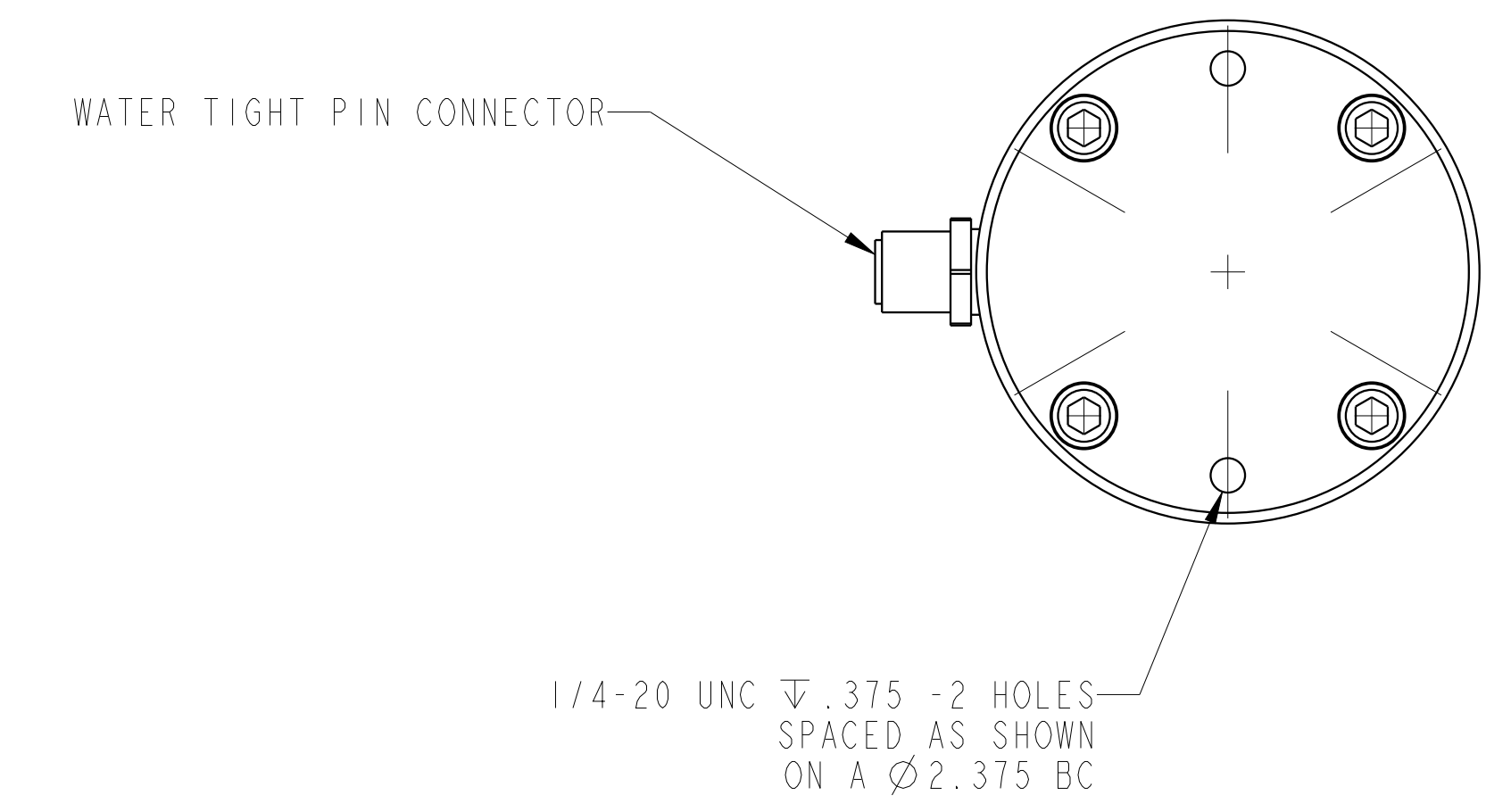
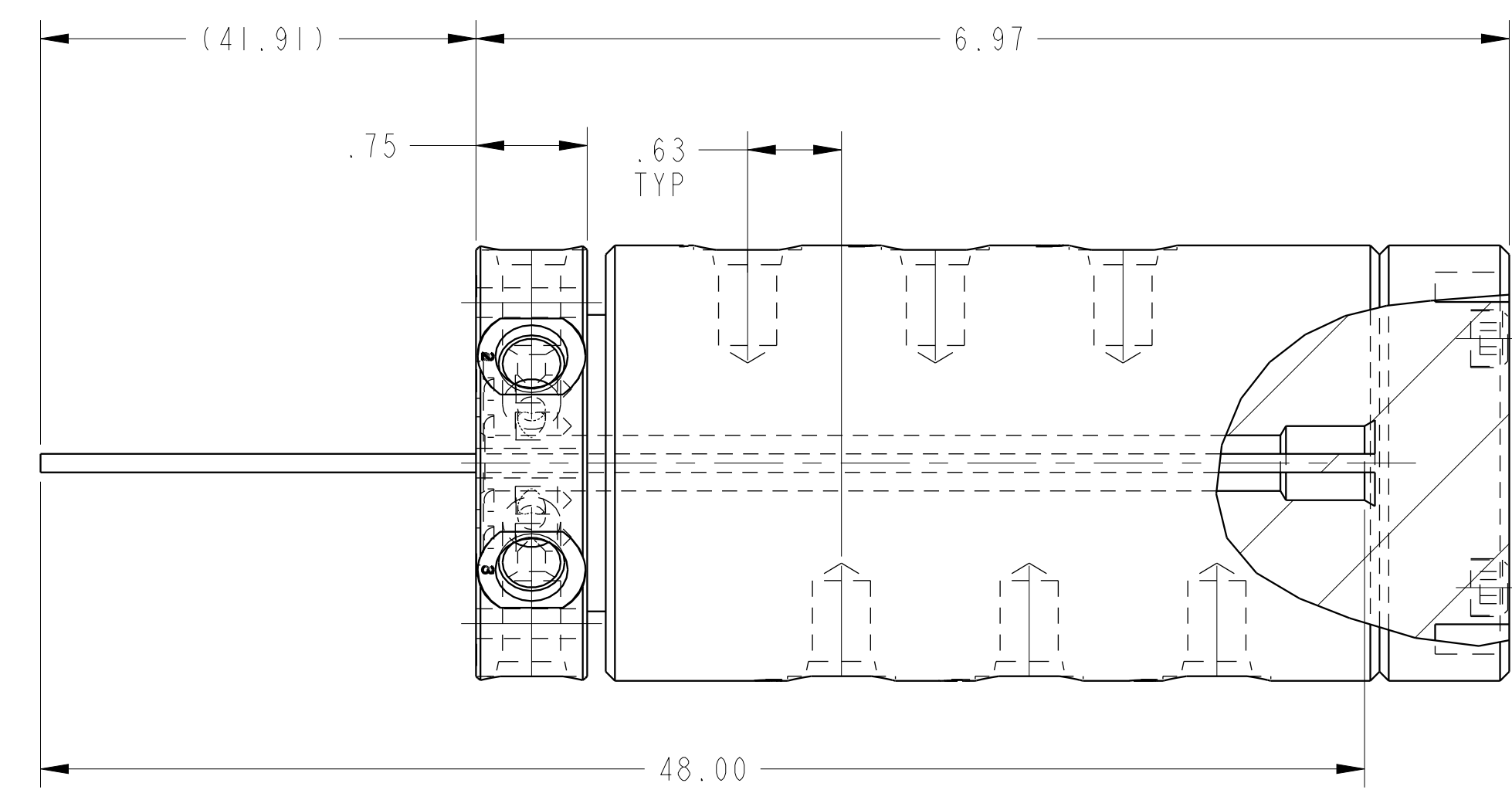
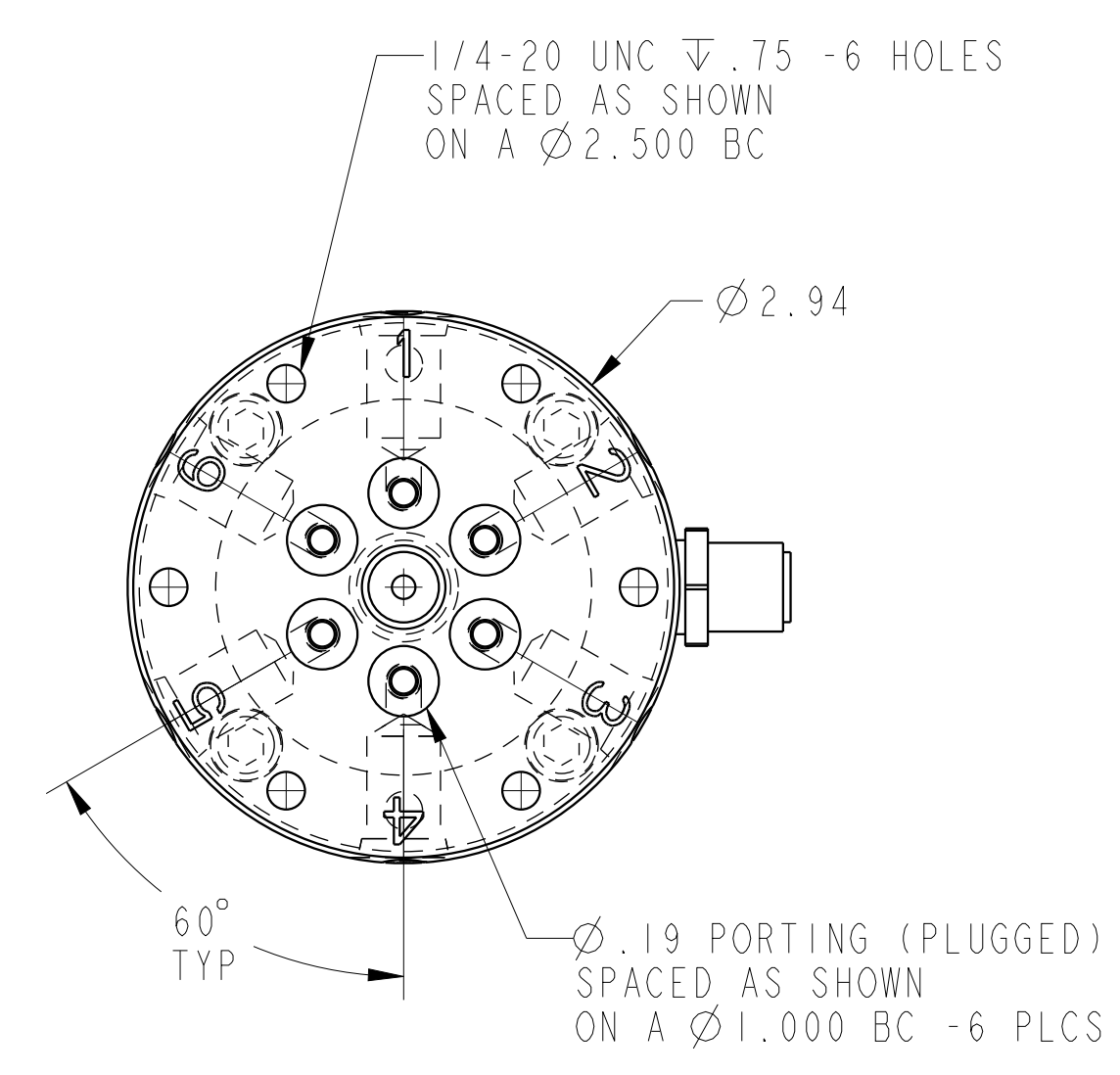
2

3

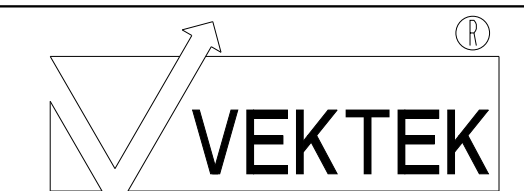
4



ILC32624600ES12A REV C ECN 5033



CAD CONTROL DRAWING



VEKTEK, INC.
1334 E. SIXTH AVE. P.O. BOX 625
EMPORIA, KS. 66801 U.S.A.

C	5033	RELEASE	JDW	02/14/23	32624600ES12A	C	RU, 6 PASSAGE, SAE4, 12 CIRCUIT
REV	IN ACCORDANCE WITH ECN	EFFECTIVE DATE	REVISED BY	DATE	REFERENCE MODEL	REF REV	
DRW BY:	K. ROEMER	DRAWING STATUS: Released			TOLERANCES DO NOT APPLY		SIZE
DATE:	06-29-05	PRODUCTION APPROVED FOR RELEASED STATUS ONLY			DIMENSIONS ARE NOMINAL		D
					ILC32624600ES12A		REV C
							FORM FEG036, Rev. B

2

3

4

SHEET 1 OF 1