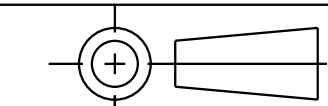
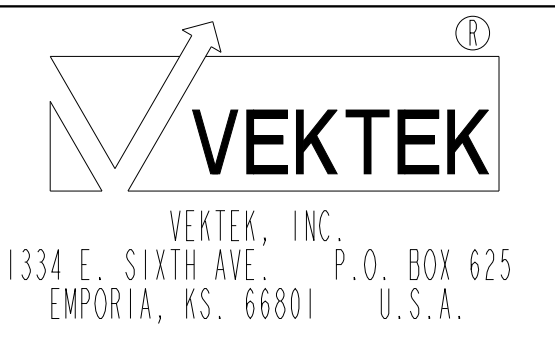


ILC33011104 REV A ECN 3532
SCALE 1.000

PICO CONNECTOR, M8, FEMALE, 3 POLE

CAD CONTROL
DRAWING



A	3532	RELEASE	JDW	07/16/18
REV	IN ACCORDANCE WITH ECN	EFFECTIVE DATE	REVISED BY	DATE
DRW BY:	JDW	DRAWING STATUS: Released		
DATE:	07/13/18	PRODUCTION APPROVED FOR RELEASED STATUS ONLY		

33011104	A
REFERENCE MODEL	REF REV
TOLERANCES DO NOT APPLY DIMENSIONS ARE NOMINAL	

ASSY, FCC, FIXTURE, XMTR, FTU, DUAL
SIZE D
ILC33011104
REV A