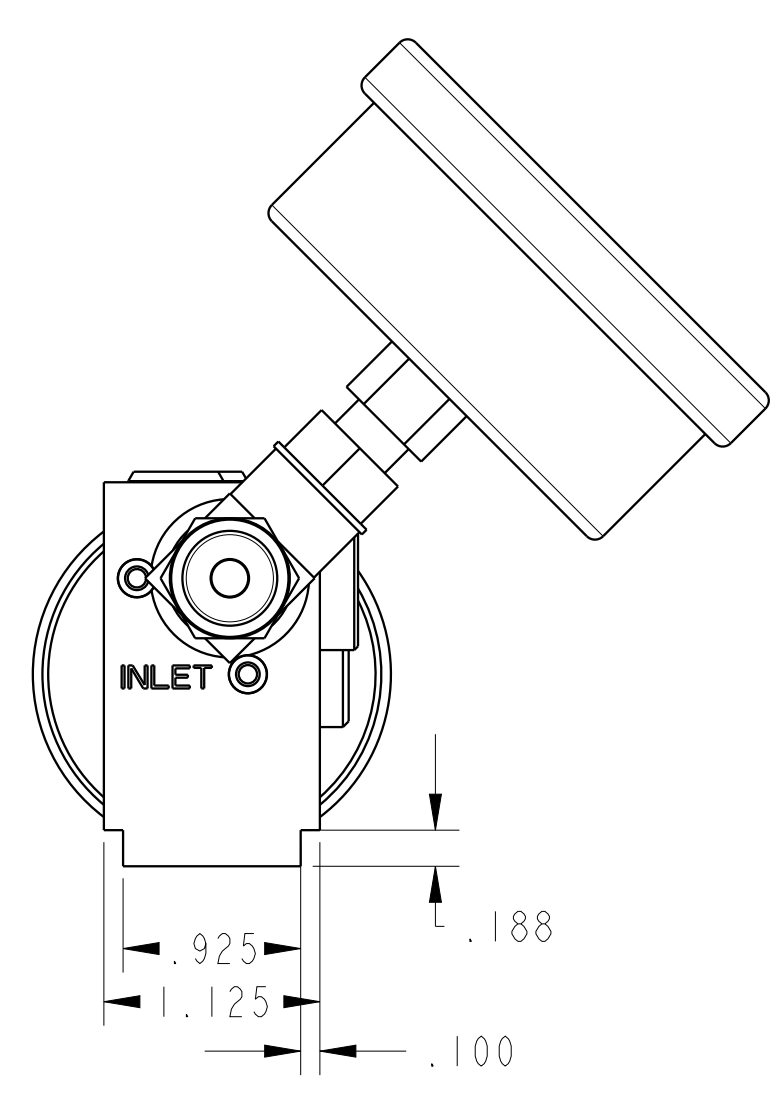
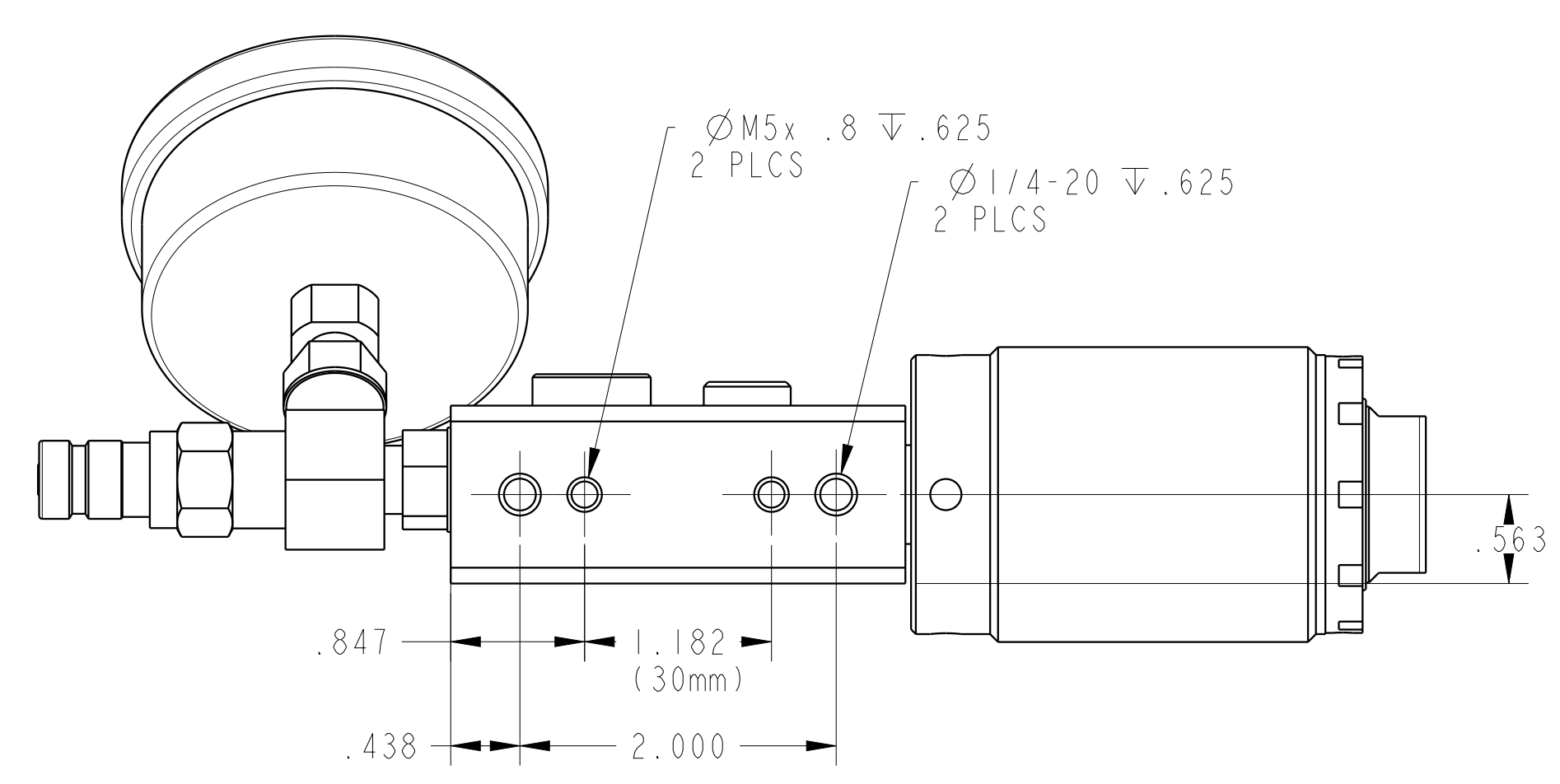
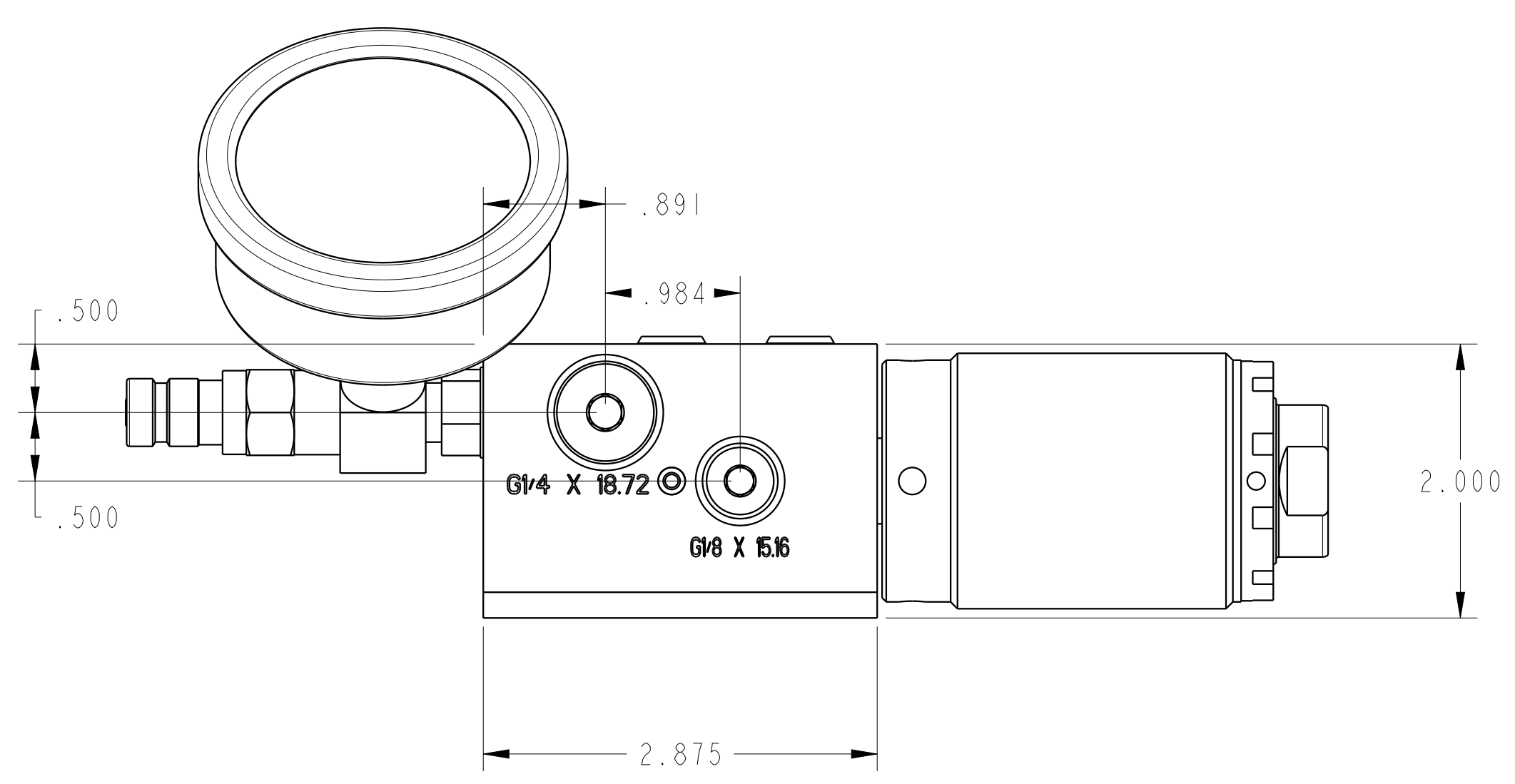


ILC33011700 REVA ECN3582



| | | | |
|---|--|--|------------------------------|
| CAD CONTROL DRAWING | | VEKTEK, INC. 1334 E. SIXTH AVE. P.O. BOX 625 EMPORIA, KS. 66801 U.S.A. | |
| | | | |
| A 3582 | RELEASE | ALS | 9/24/18 |
| REV IN ACCORDANCE WITH ECN | EFFECTIVE DATE | REVISED BY | DATE |
| DRW BY: ALS | DRAWING STATUS: Released | | 33011700 A |
| DATE: 9/21/18 | PRODUCTION APPROVED FOR RELEASED STATUS ONLY | | ASSY, PRESSURE SET, IP VALVE |
| TOLERANCES DO NOT APPLY DIMENSIONS ARE NOMINAL | | SIZE D | ILC33011700 REV A |
| | | FORM FEG036, Rev. B | |