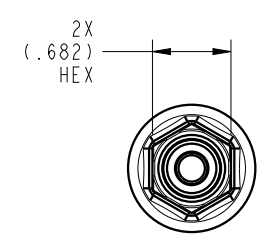


JIC 37° FEMALE SWIVEL
CRIMPED END
(9/16-18 UNF)



ILC35111602 REV A ECN5972

**CAD CONTROL
DRAWING**



VEKTEK, INC.
1334 E. SIXTH AVE. P.O. BOX 625
EMPORIA, KS. 66801 U.S.A.

A	5972	RELEASE	AJT	5/27/26
REV	IN ACCORDANCE WITH ECN	EFFECTIVE DATE	REVISED BY	DATE
DRW BY:	AJT	DRAWING STATUS: Released		
DATE:	5/27/26	PRODUCTION APPROVED FOR RELEASED STATUS ONLY		

35111602	A
REFERENCE MODEL	REF REV
TOLERANCES DO NOT APPLY DIMENSIONS ARE NOMINAL	

HOSE, HYD, 3/8 X 120, JIC	
SIZE B	ILC35111602 REV A

FORM FEG036, Rev. B

SHEET 1 OF 1