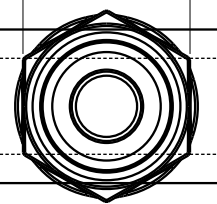
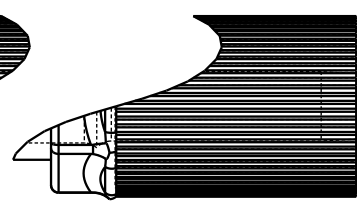
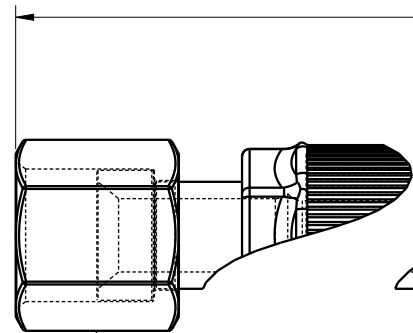
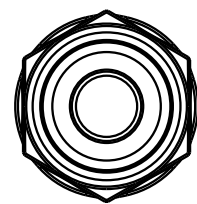


ILC35111805 REV A ECN 5782



.870
HEX
TYP

IC 37°-8 FEMALE SWIVEL
3/4"-16

CAD CONTROL
DRAWING



VEKTEK, INC.
1334 E. SIXTH AVE. P.O. BOX 625
EMPORIA, KS. 66801 U.S.A.

A	5782	RELEASE	BDC	9/5/25	35111805	A	ILC, HOSE, HYD, 1/2 X 60
REV	IN ACCORDANCE WITH ECN	EFFECTIVE DATE	REVISED BY	DATE	REFERENCE MODEL	REF REV	
DRW BY:	BDC	DRAWING STATUS: Released			TOLERANCES DO NOT APPLY DIMENSIONS ARE NOMINAL		SIZE B
DATE:	9/5/25	PRODUCTION APPROVED FOR RELEASED STATUS ONLY					ILC35111805 REV A

FORM FEG036, Rev. B

SHEET 1 OF 1