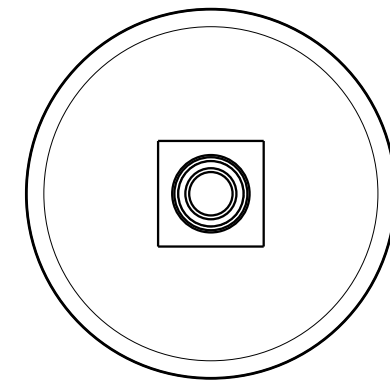
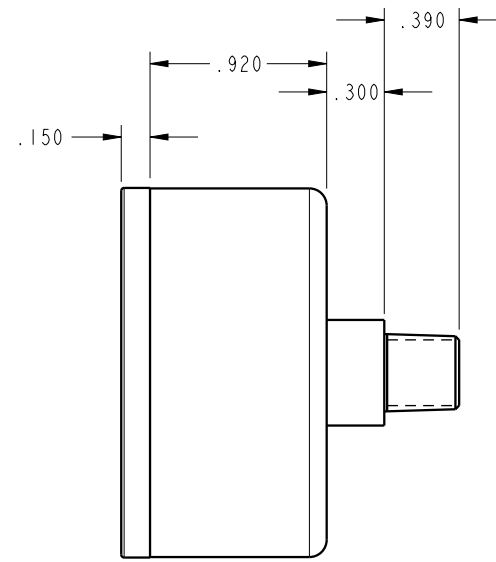
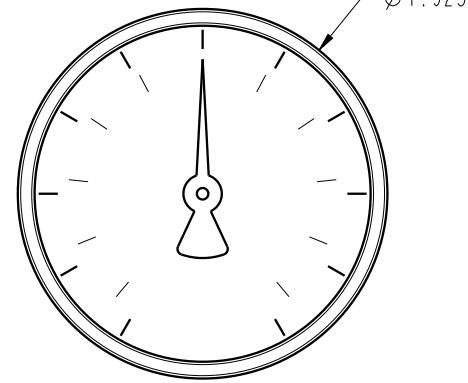


ILC50201000 REV A ECN 2856



**CAD CONTROL  
DRAWING**



VEKTEK, INC.  
1334 E. SIXTH AVE. P.O. BOX 625  
EMPORIA, KS. 66801 U.S.A.

A	2856	RELEASE	MAJ	5-13-15	50201000	A	Gauge, Press, Air, 160 PSI, 1100 KPa
REV	IN ACCORDANCE WITH ECN	EFFECTIVE DATE	REVISED BY	DATE	REFERENCE MODEL	REF REV	
DRW BY:	MAJ	<b>DRAWING STATUS: Released</b>			TOLERANCES DO NOT APPLY DIMENSIONS ARE NOMINAL	SIZE B	ILC50201000 REV A
DATE:	5-13-15	PRODUCTION APPROVED FOR RELEASED STATUS ONLY					FORM FEG036, Rev. B

SHEET 1 OF 1