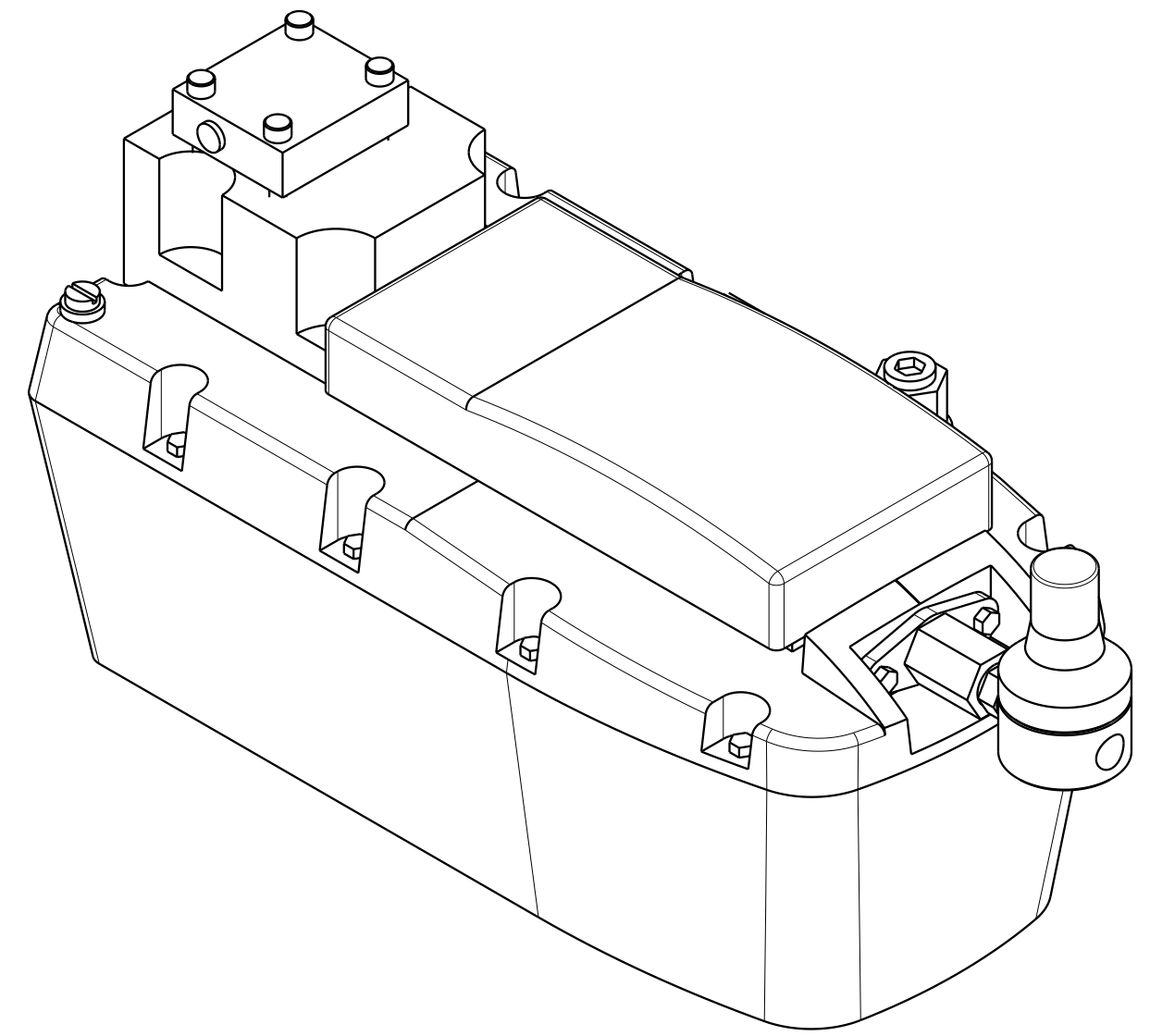
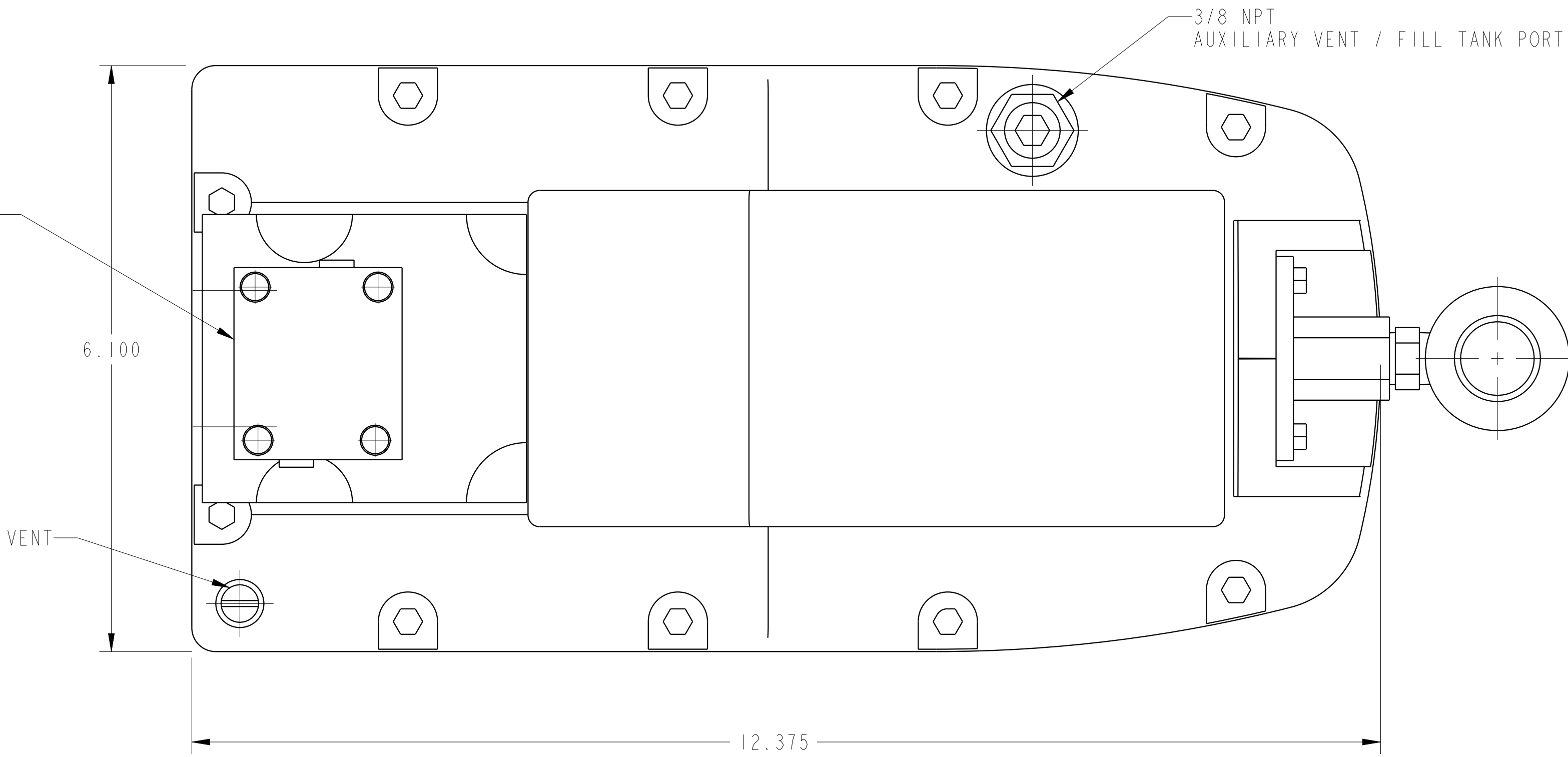
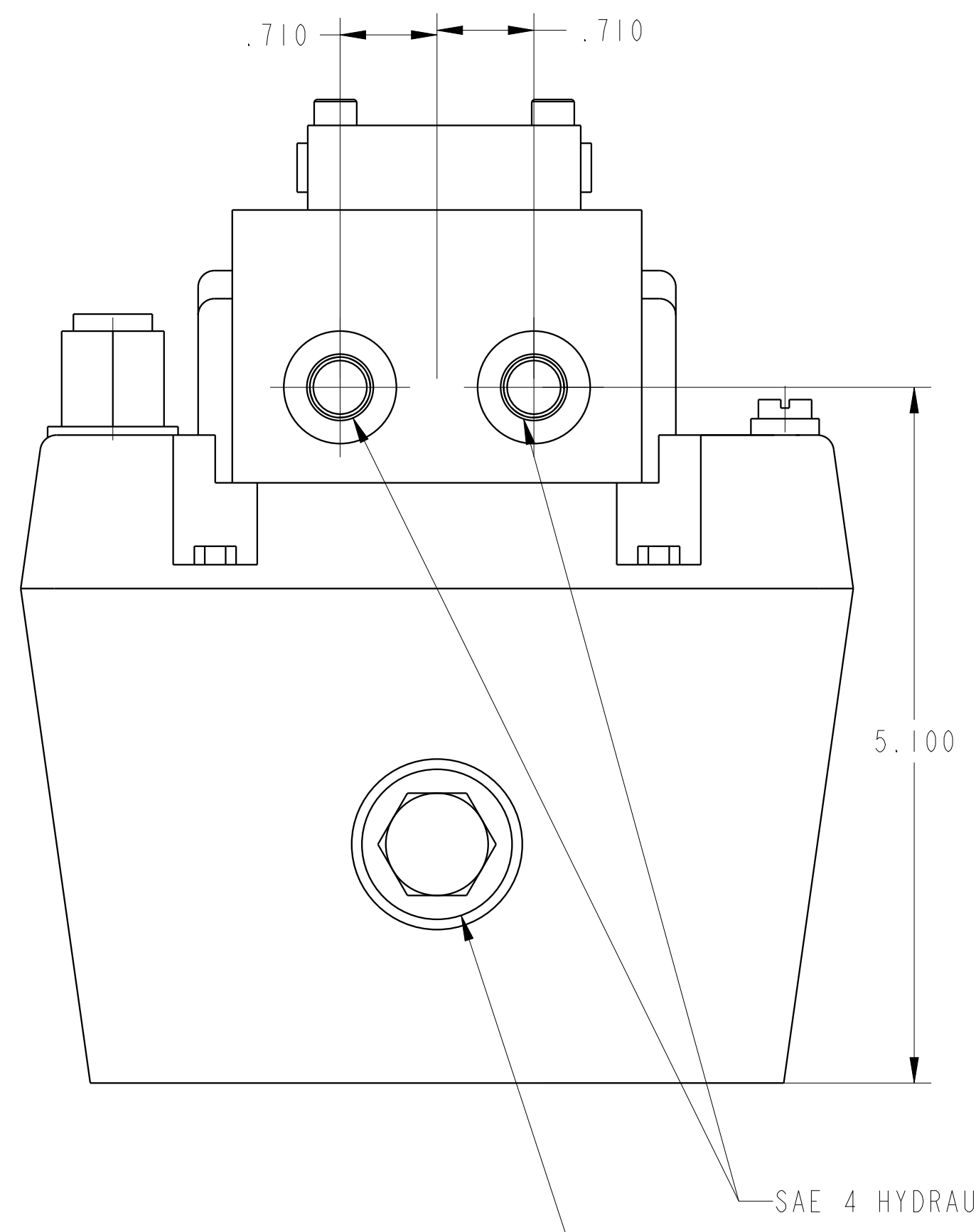


NFPA D03 DIR CTRL VLV MOUNTING  
WITH 93198900 CROSSOVER PLATE

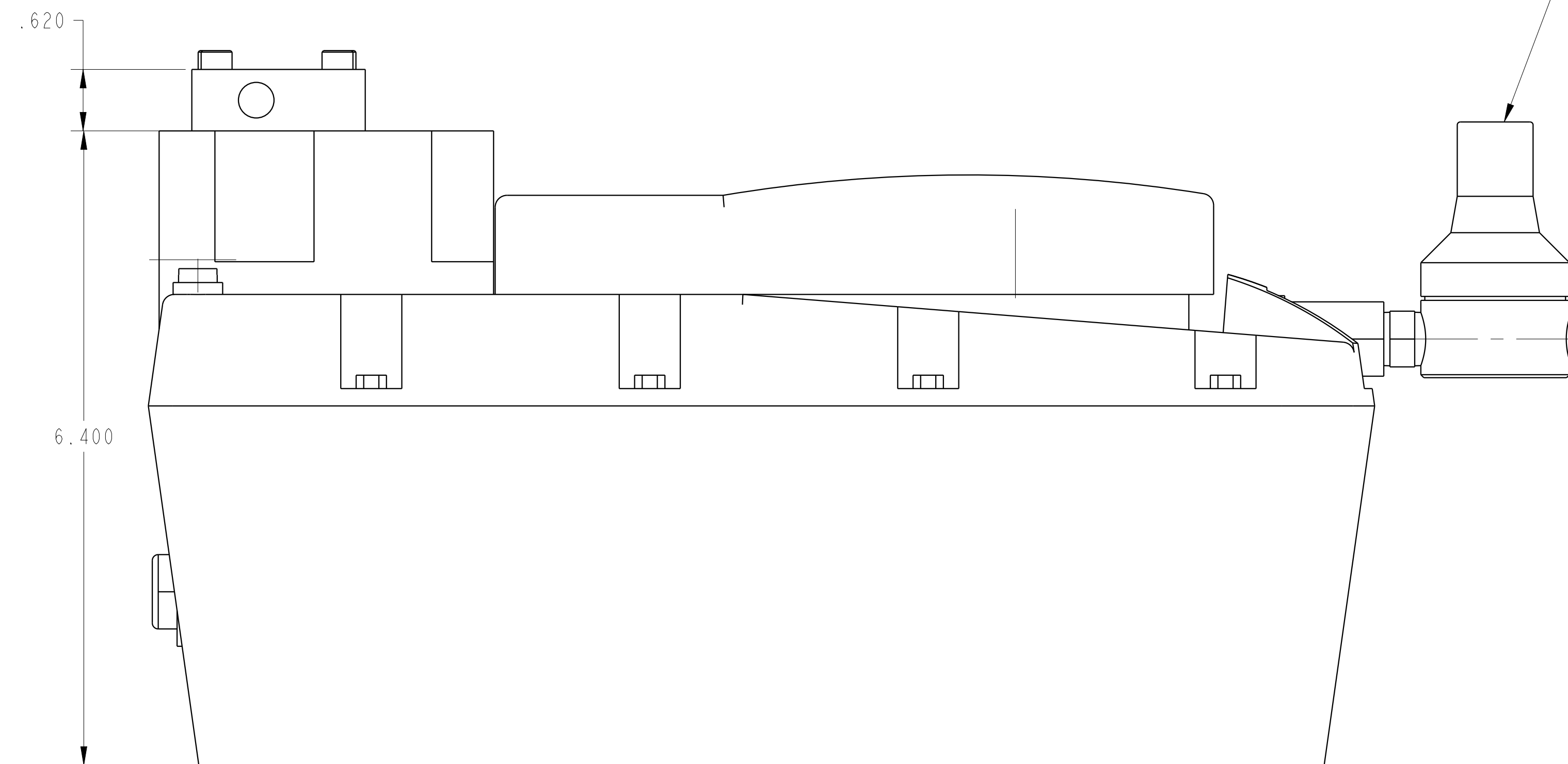


ILC55821300 REV B ECN3637

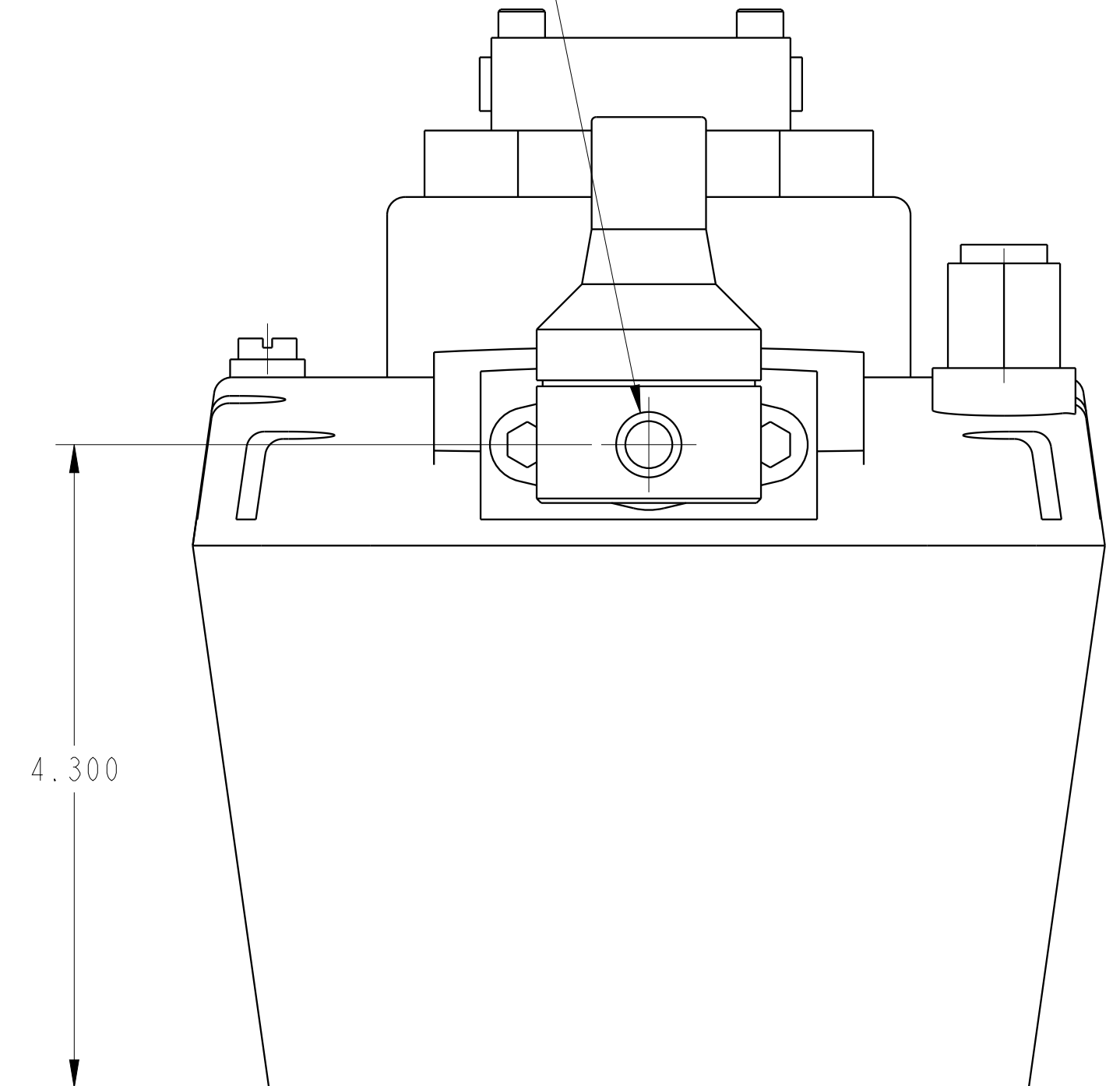
.710 .710



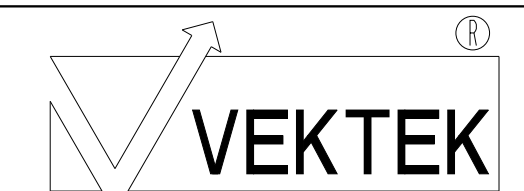
.620



1/4 NPT PNEUMATIC INPUT PORT



CAD CONTROL  
DRAWING



VEKTEK, INC.  
1334 E. SIXTH AVE. P.O. BOX 625  
EMPORIA, KS. 66801 U.S.A.

B	3637	RELEASE	JDW	10/31/18	55821300	T	PUMP, A/H, VLV OPERATED, D03
REV	IN ACCORDANCE WITH ECN	EFFECTIVE DATE	REVISED BY	DATE	REFERENCE MODEL	REF REV	
DRW BY:	K. ROEMER	DRAWING STATUS: <b>Released</b>			TOLERANCES DO NOT APPLY DIMENSIONS ARE NOMINAL		SIZE D
DATE:	05-16-05	PRODUCTION APPROVED FOR RELEASED STATUS ONLY			ILC55821300		REV B