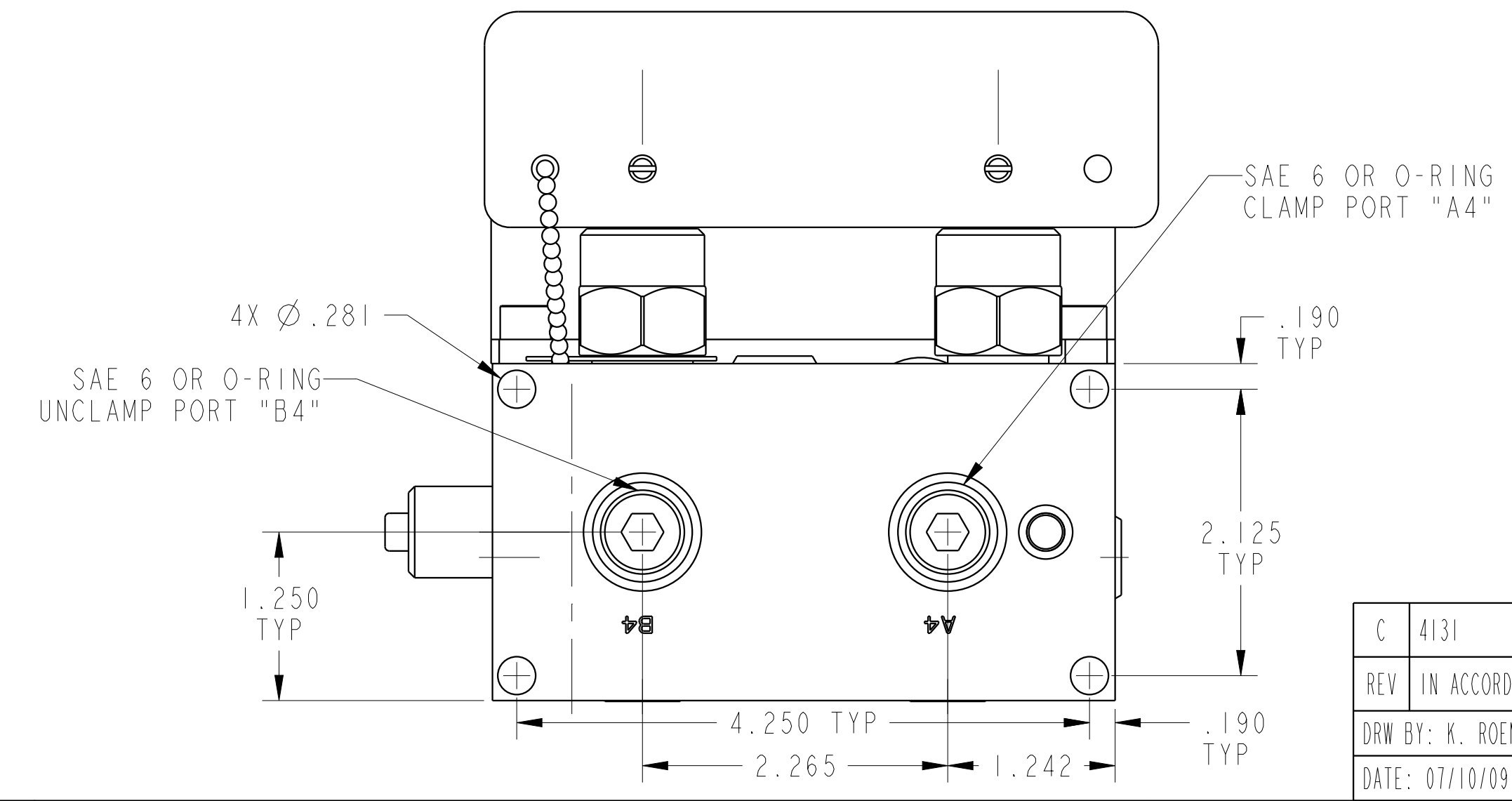
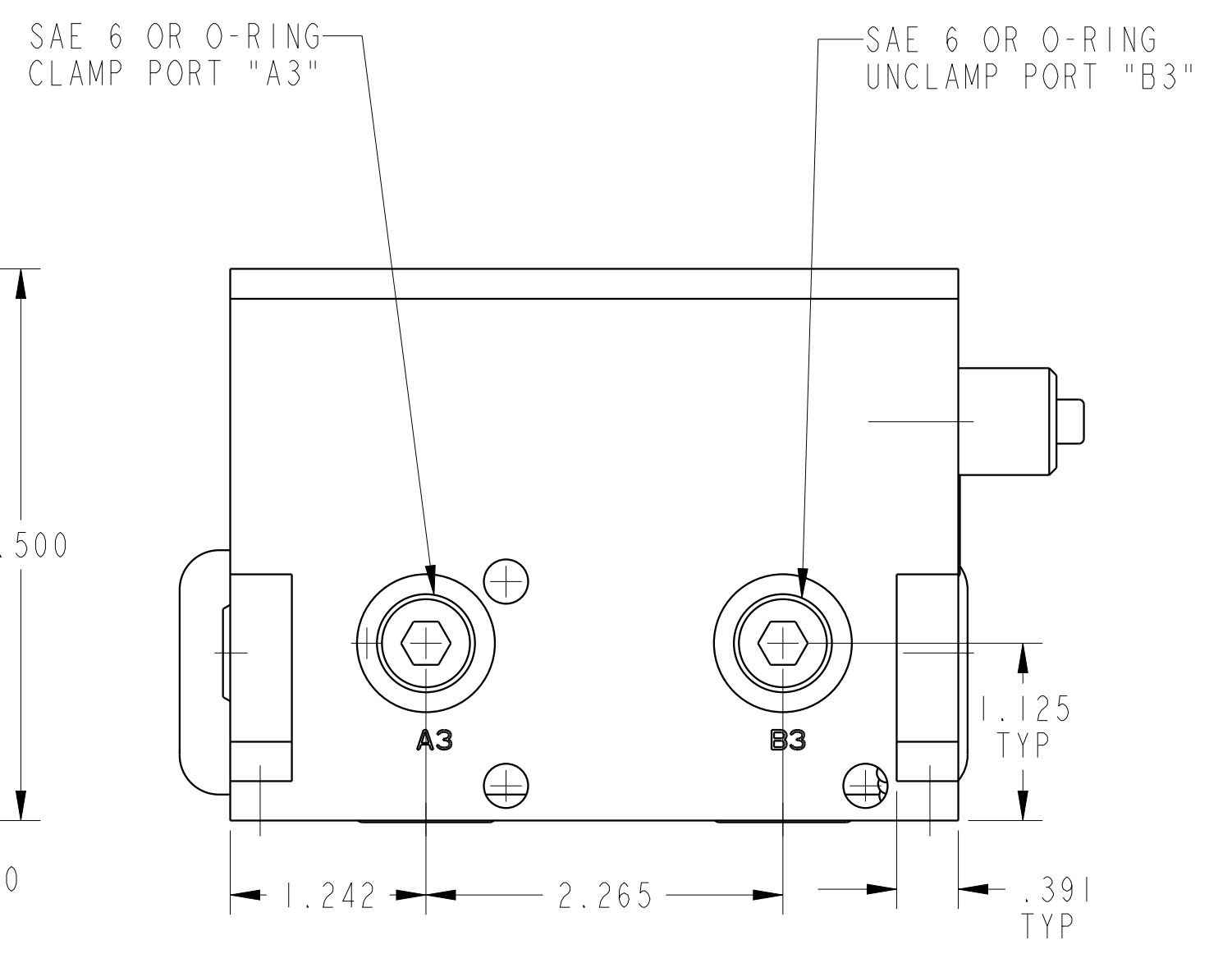
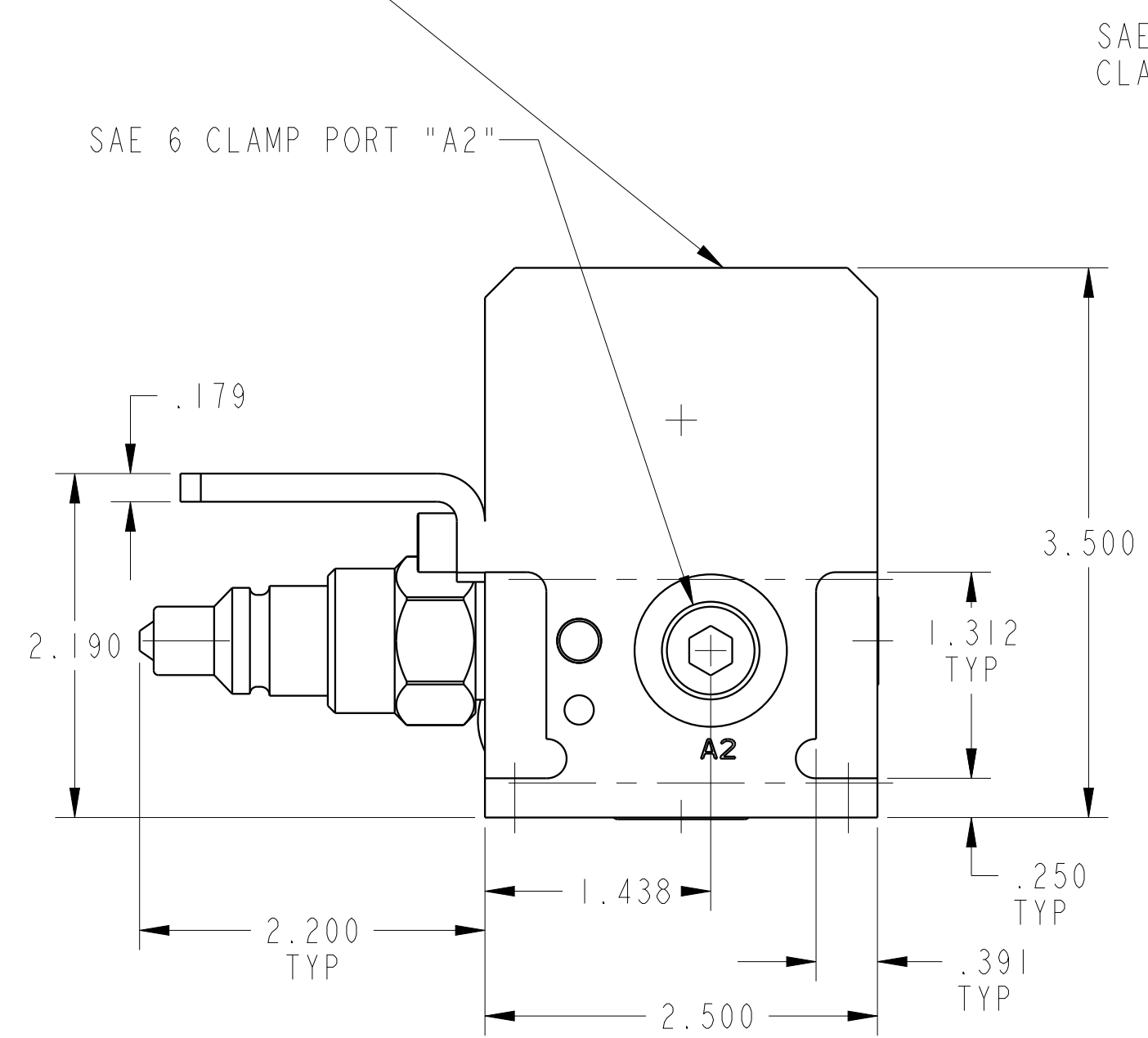
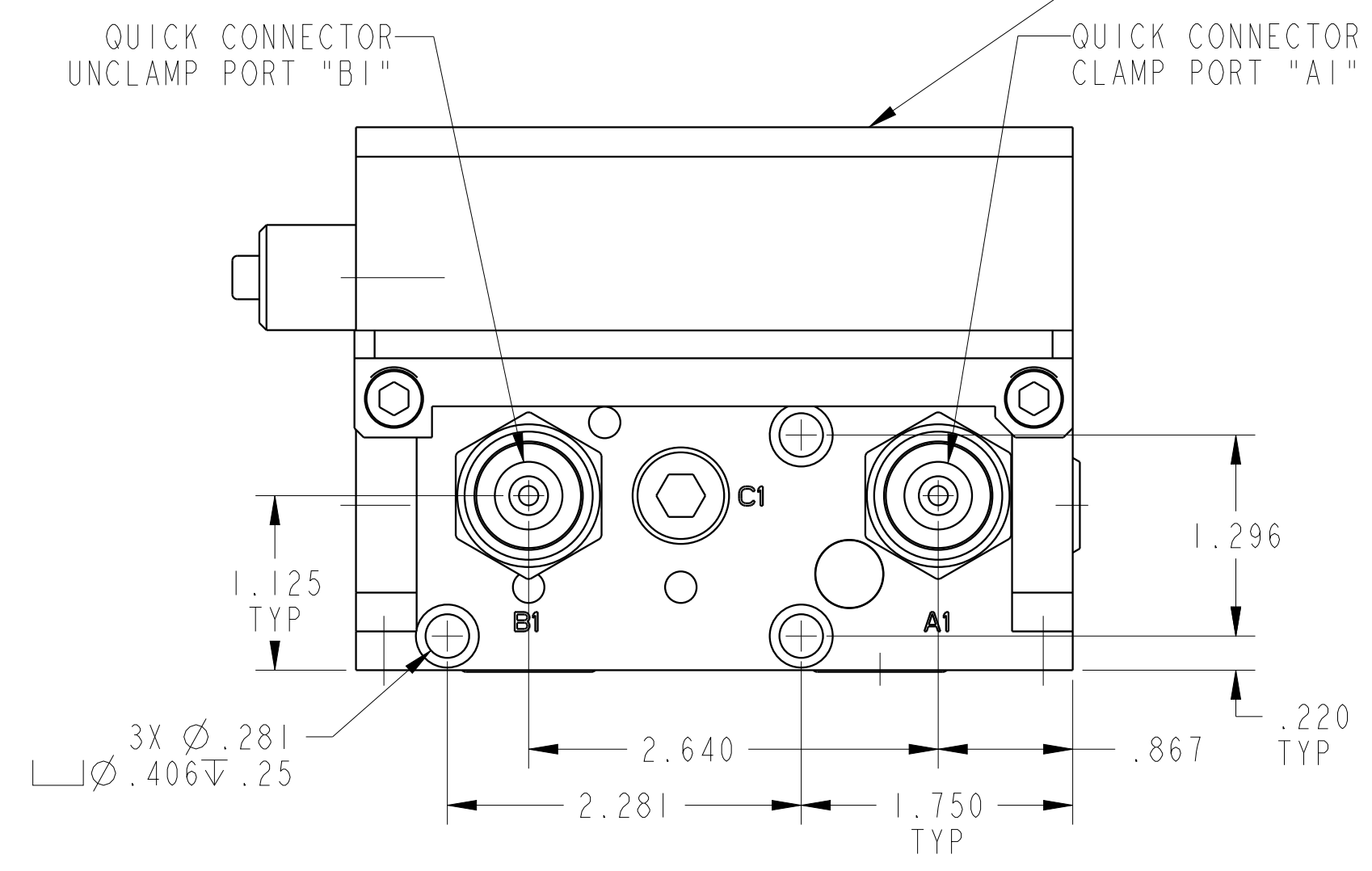
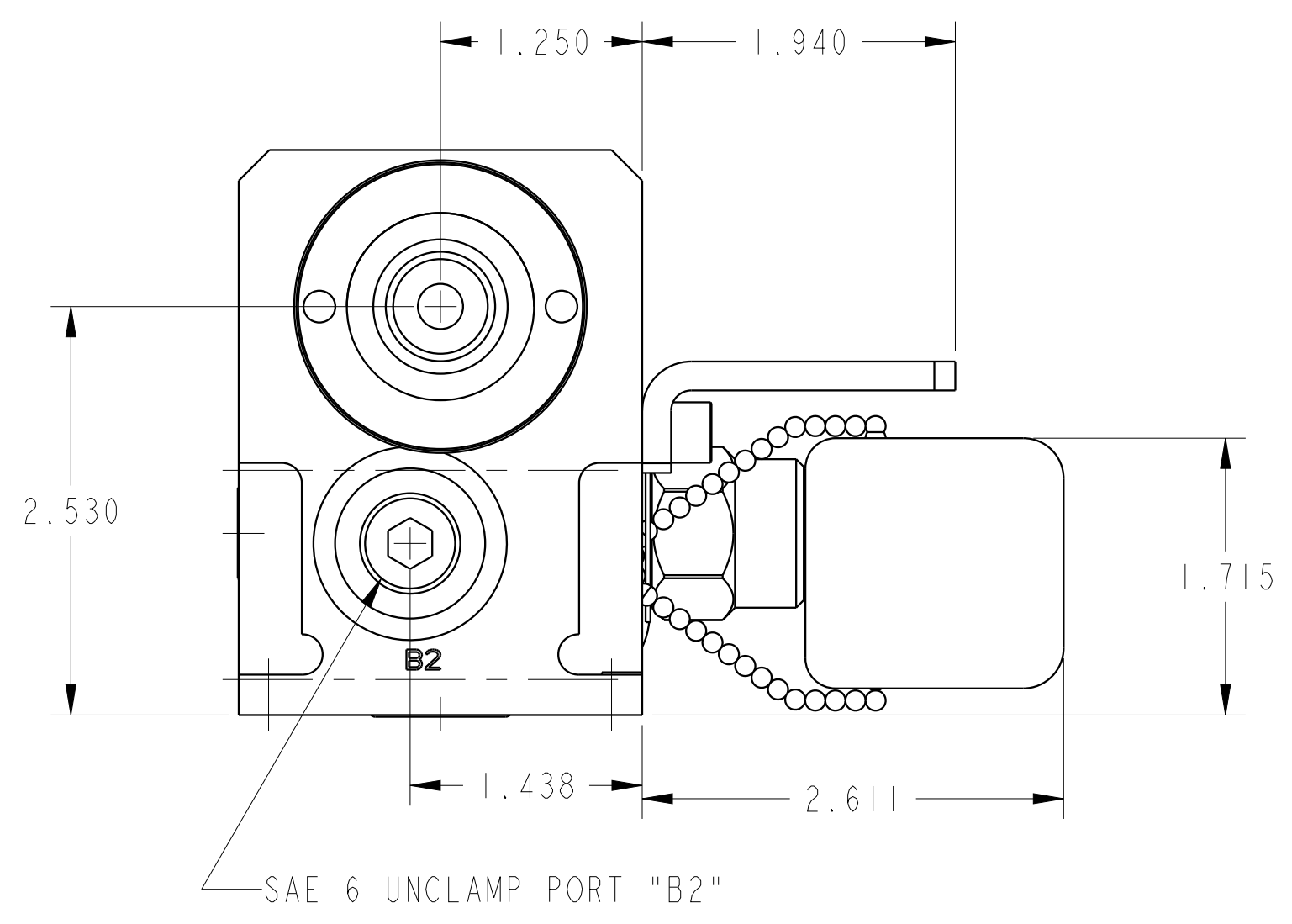


ILC56000517 REV C ECN4131



<b>CAD CONTROL DRAWING</b>		<b>VEKTEK</b> VEKTEK, INC. 1334 E. SIXTH AVE. P.O. BOX 625 EMPORIA, KS. 66801 U.S.A.	

C	4131	RELEASE	NPETERS	3/17/20
REV	IN ACCORDANCE WITH ECN	EFFECTIVE DATE	REVISED BY	DATE
DRW BY:	DRAWING STATUS: <b>Released</b>			
DATE:	PRODUCTION APPROVED FOR RELEASED STATUS ONLY			

56000517	E	PD, 2H, DUAL, 3500, INT ACC
REFERENCE MODEL	REF REV	*****
TOLERANCES DO NOT APPLY DIMENSIONS ARE NOMINAL		SIZE D
ILC56000517		REV C