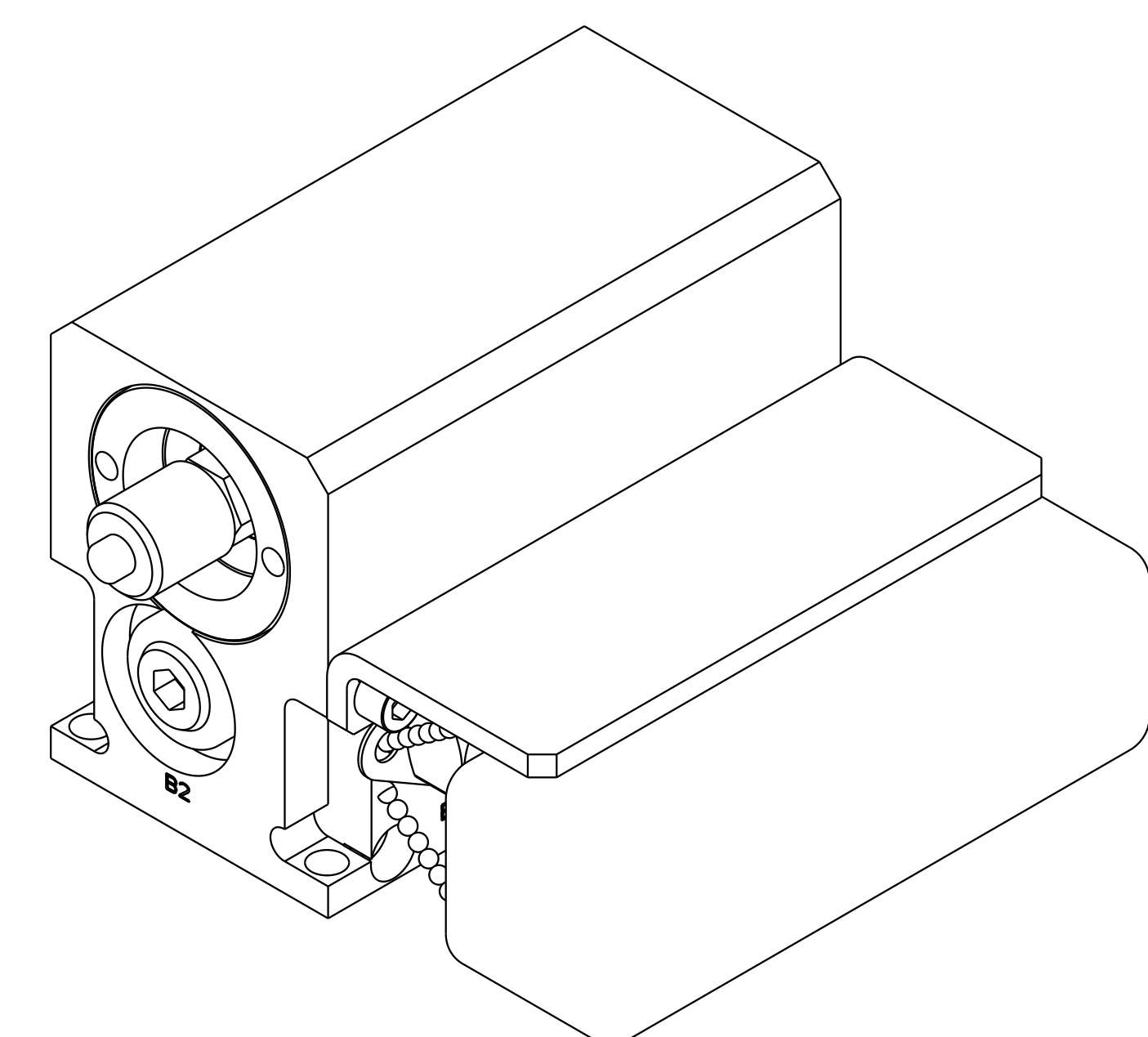
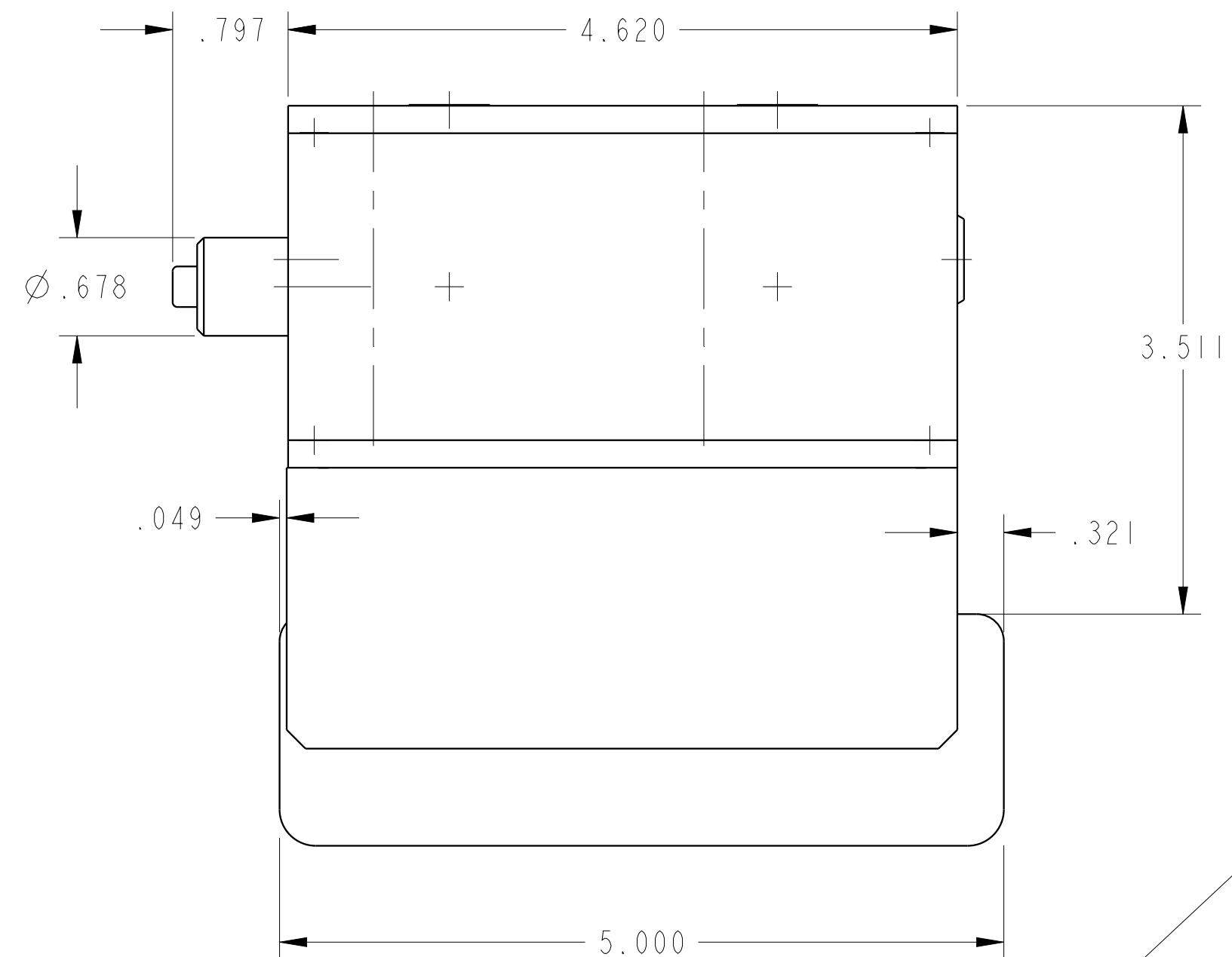


1

2

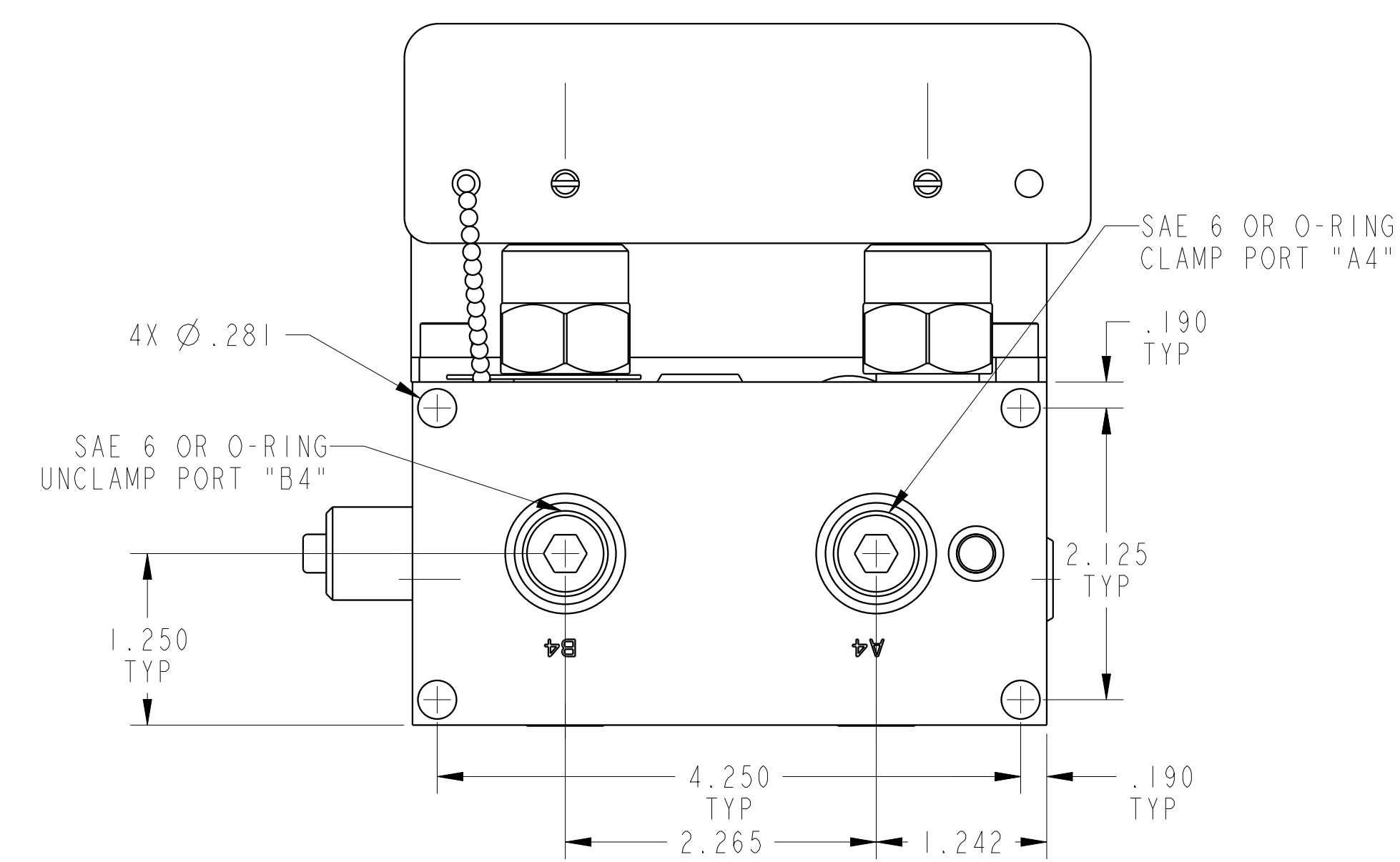
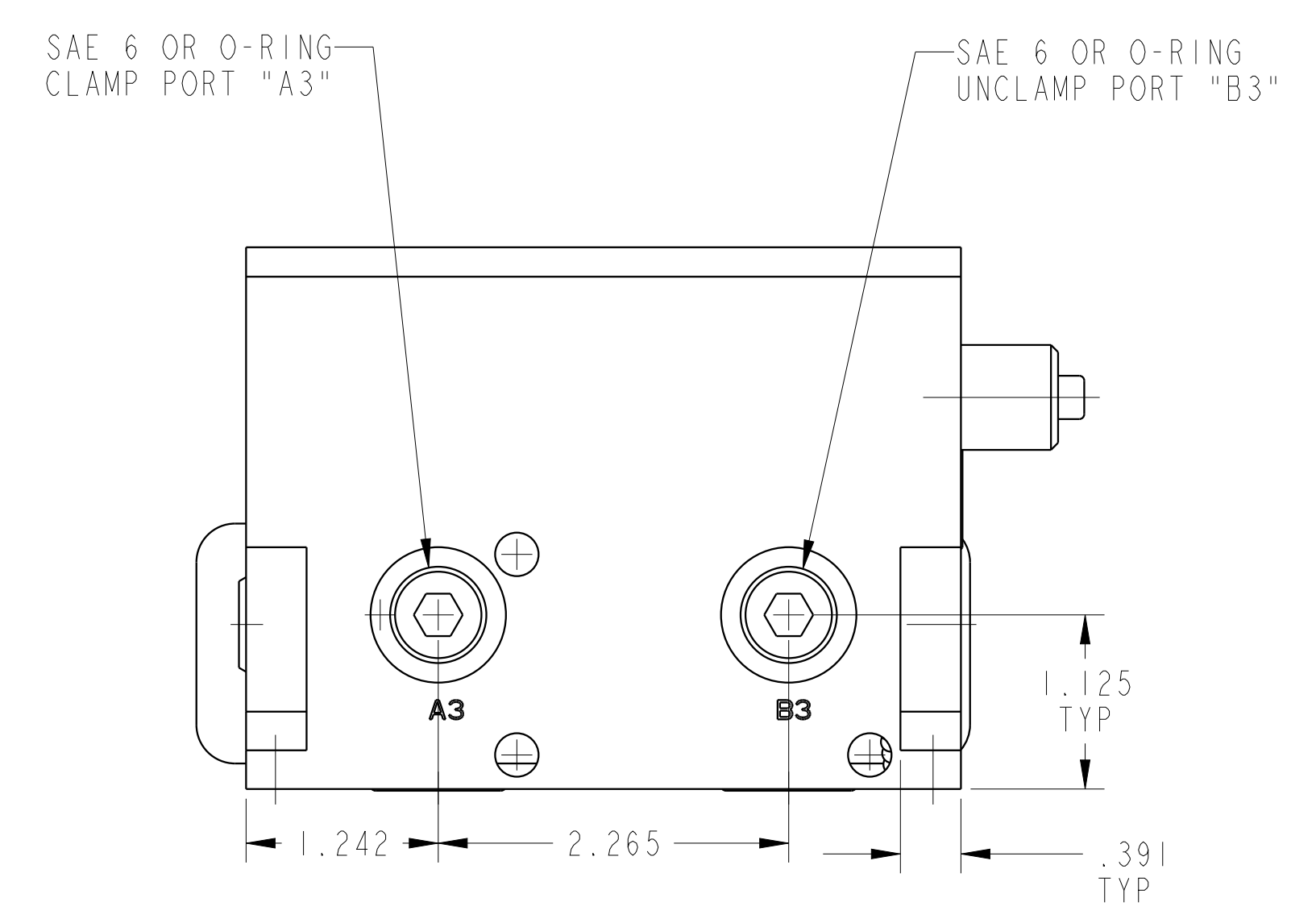
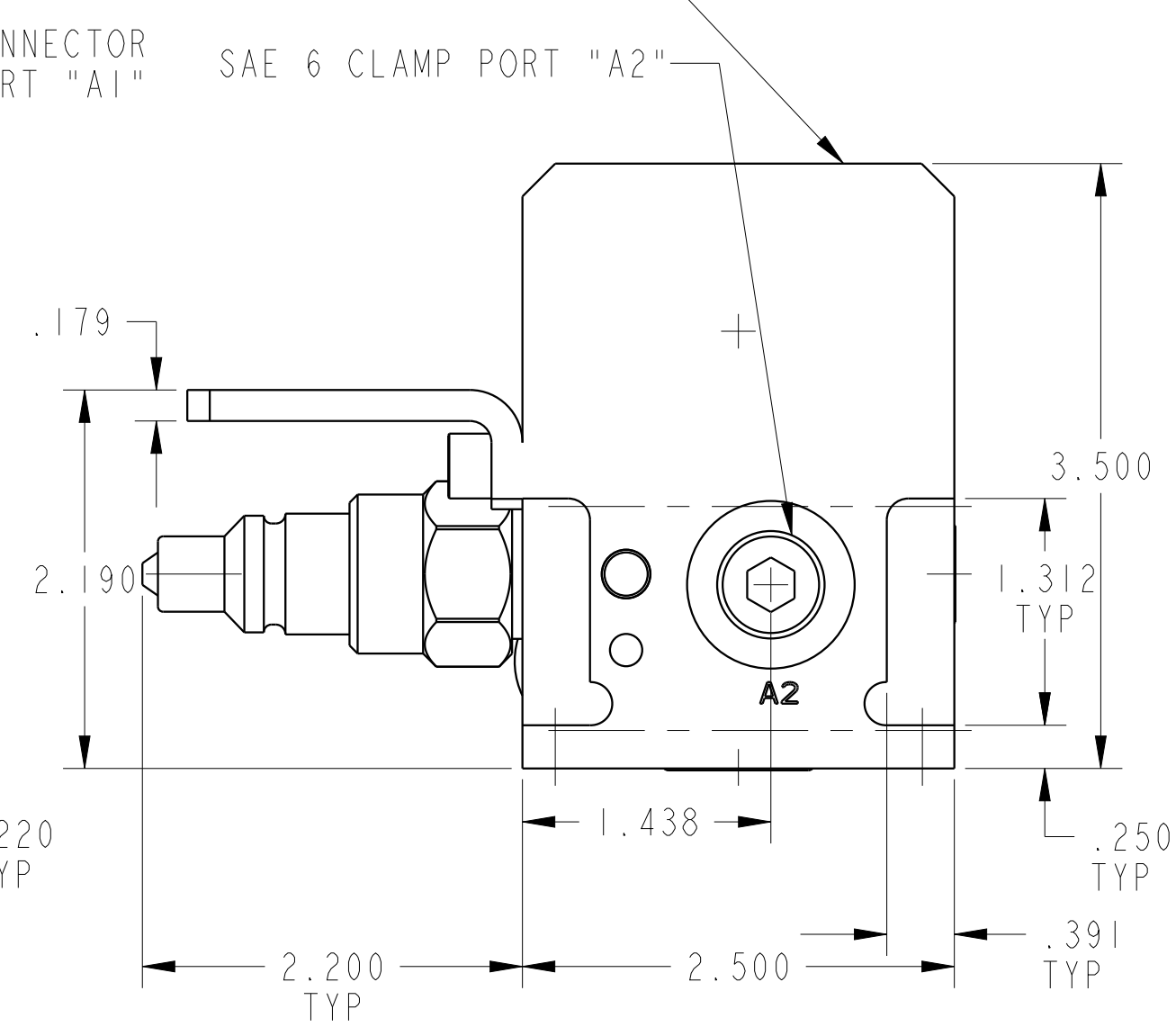
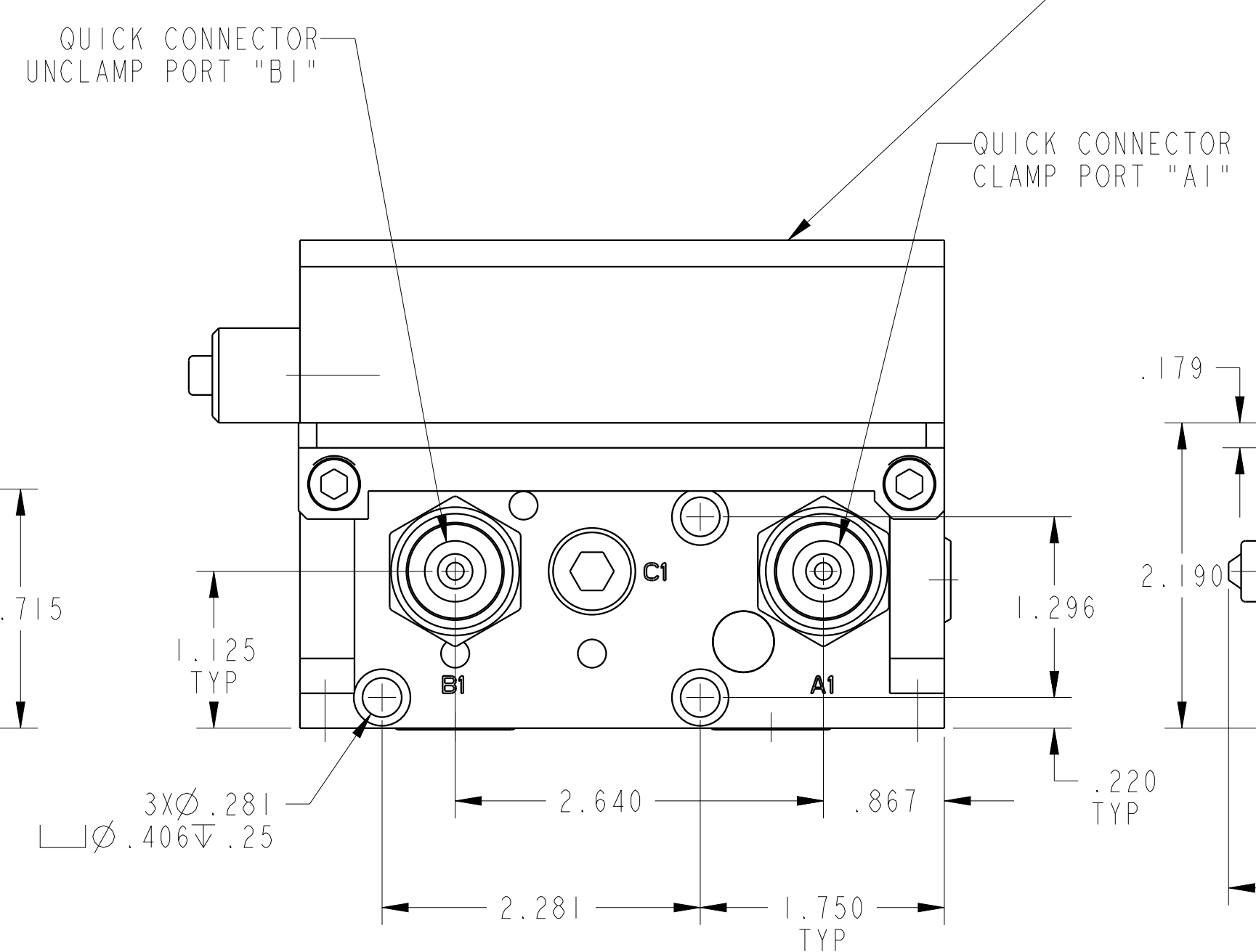
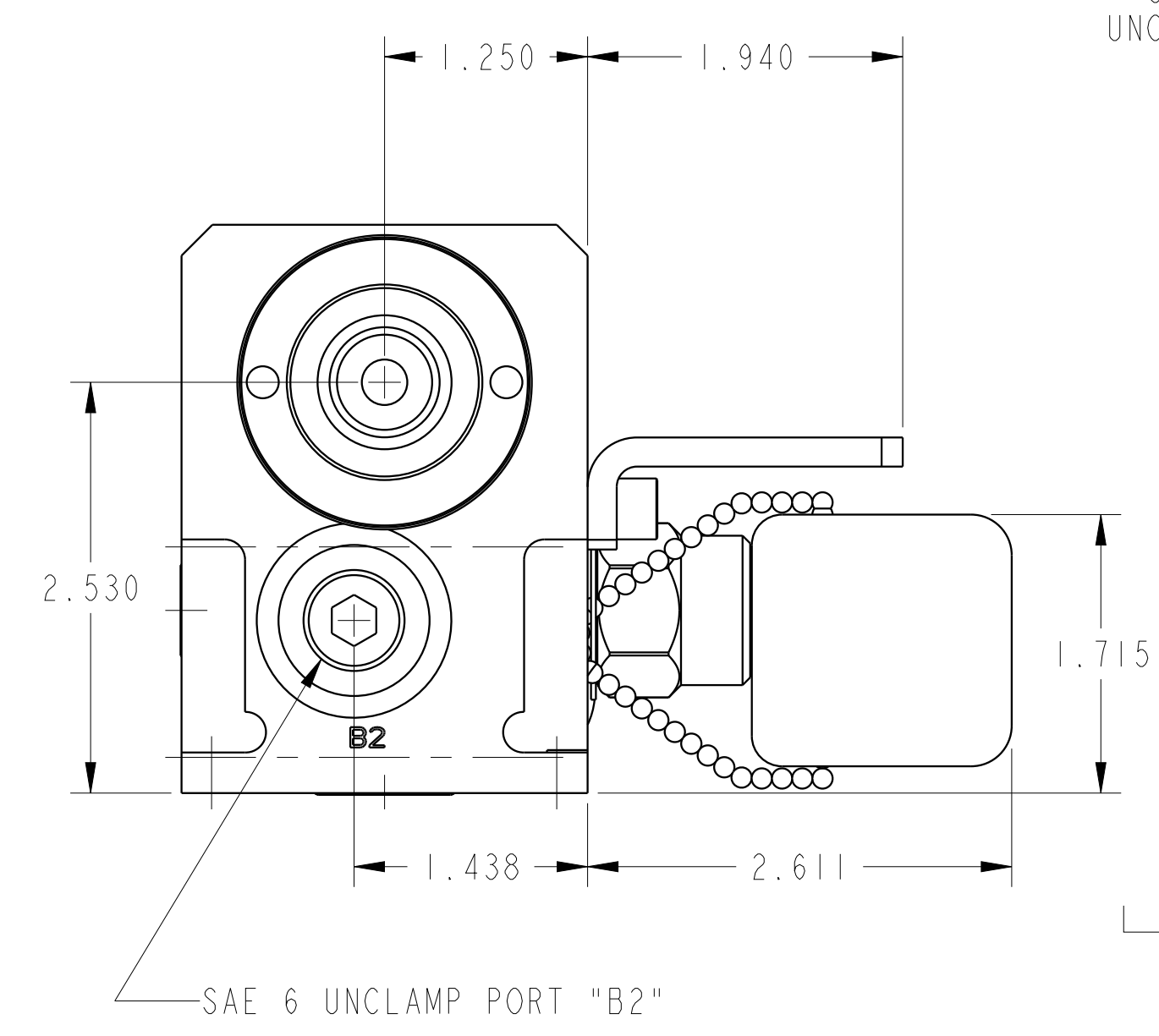
3

4

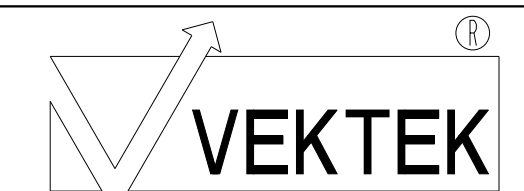


ILC56000518 REV C ECN4131

PD COVER REMOVED TO SHOW QUICK DISCONNECTS



CAD CONTROL DRAWING



VEKTEK, INC.
1334 E. SIXTH AVE. P.O. BOX 625
EMPORIA, KS. 66801 U.S.A.

C	4131	RELEASE	NPETERS	3/17/20
REV	IN ACCORDANCE WITH ECN	EFFECTIVE DATE	REVISED BY	DATE
DRW BY:	DRAWING STATUS: Released			
DATE:	PRODUCTION APPROVED FOR RELEASED STATUS ONLY			

56000518	D	PD, 2H, DUAL, 5000, INT ACC
REFERENCE MODEL	REF REV	*****
TOLERANCES DO NOT APPLY DIMENSIONS ARE NOMINAL		

SIZE	ILC56000518	REV	C
D			