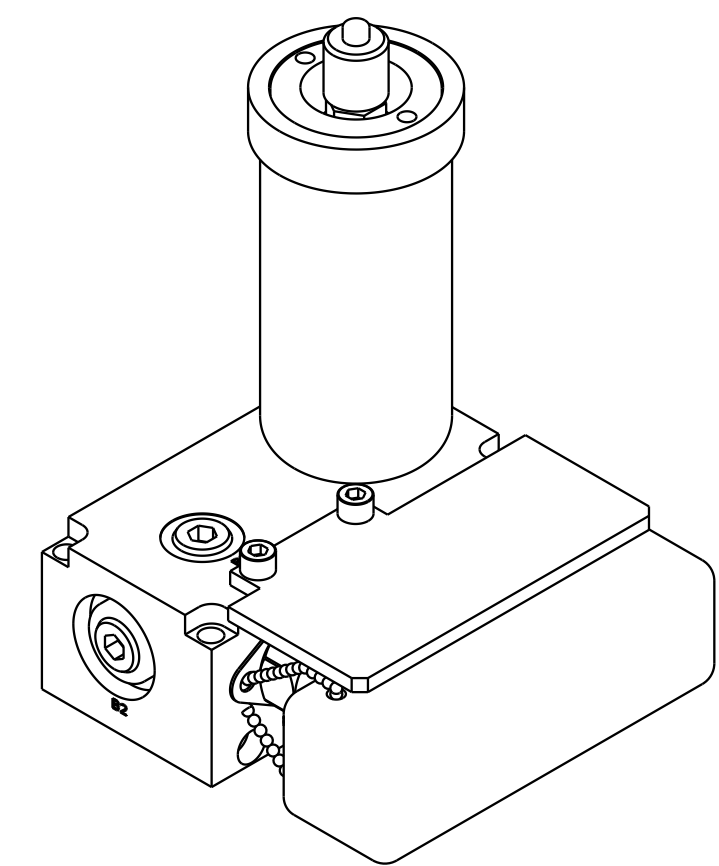
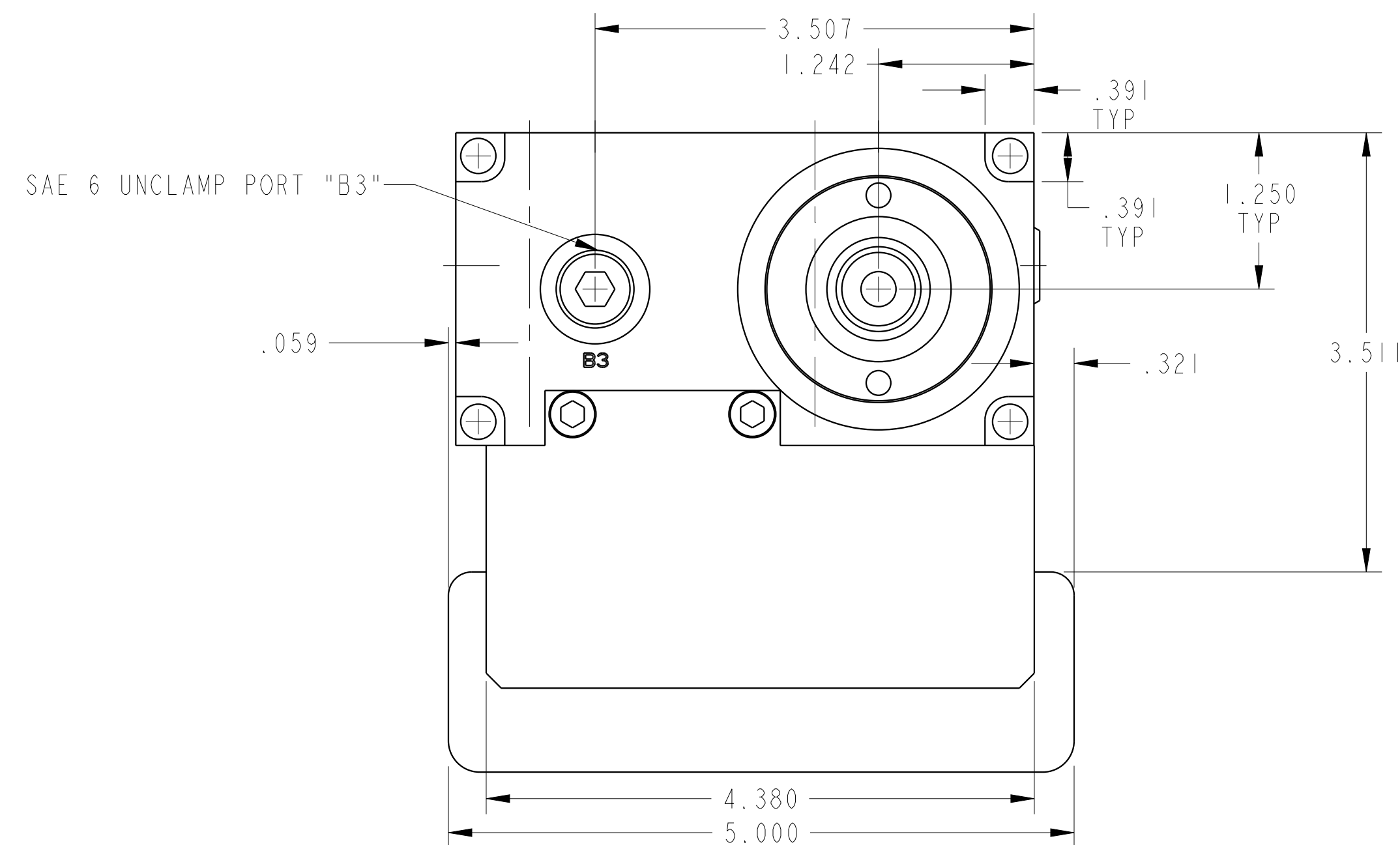


1

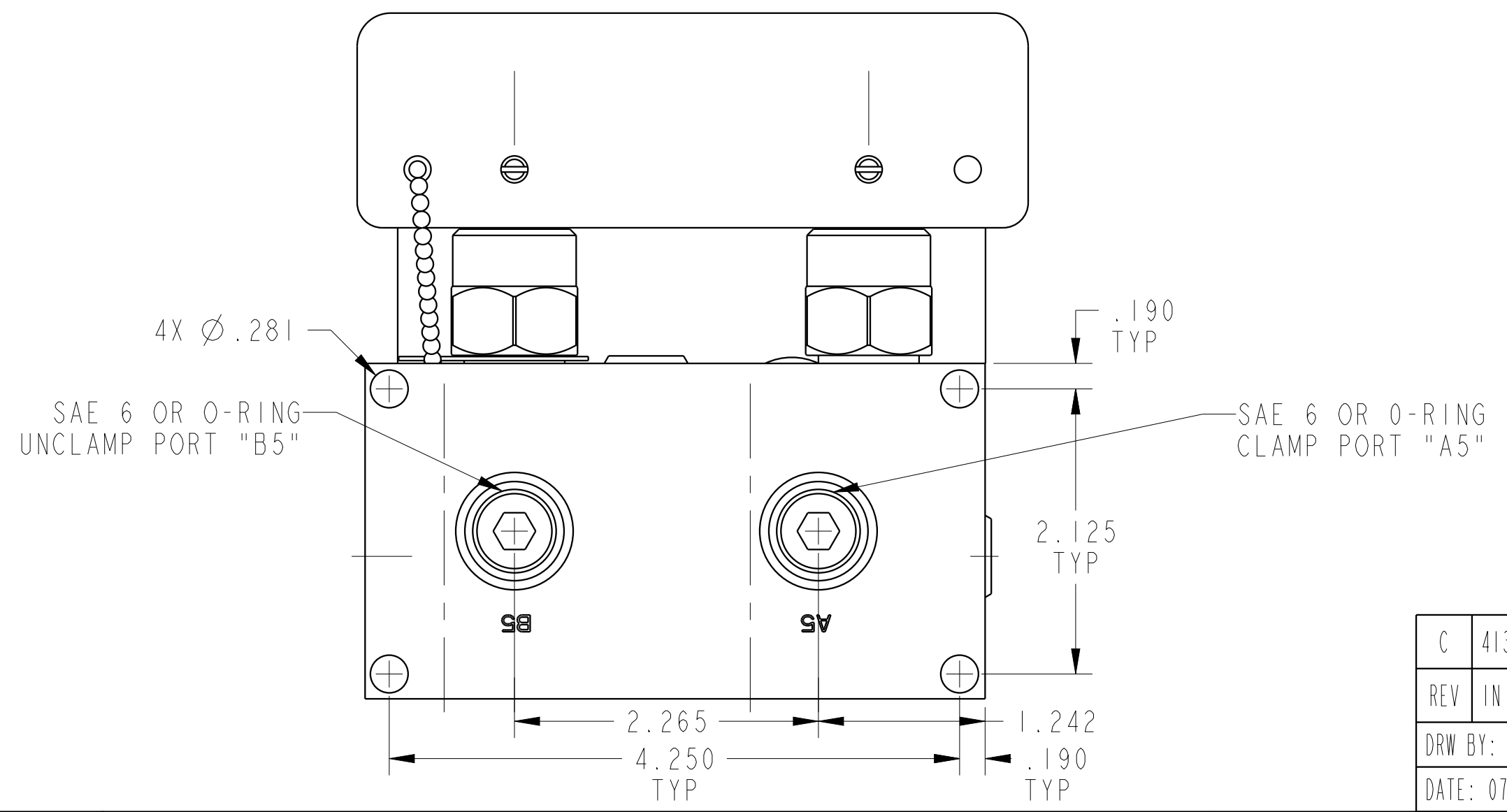
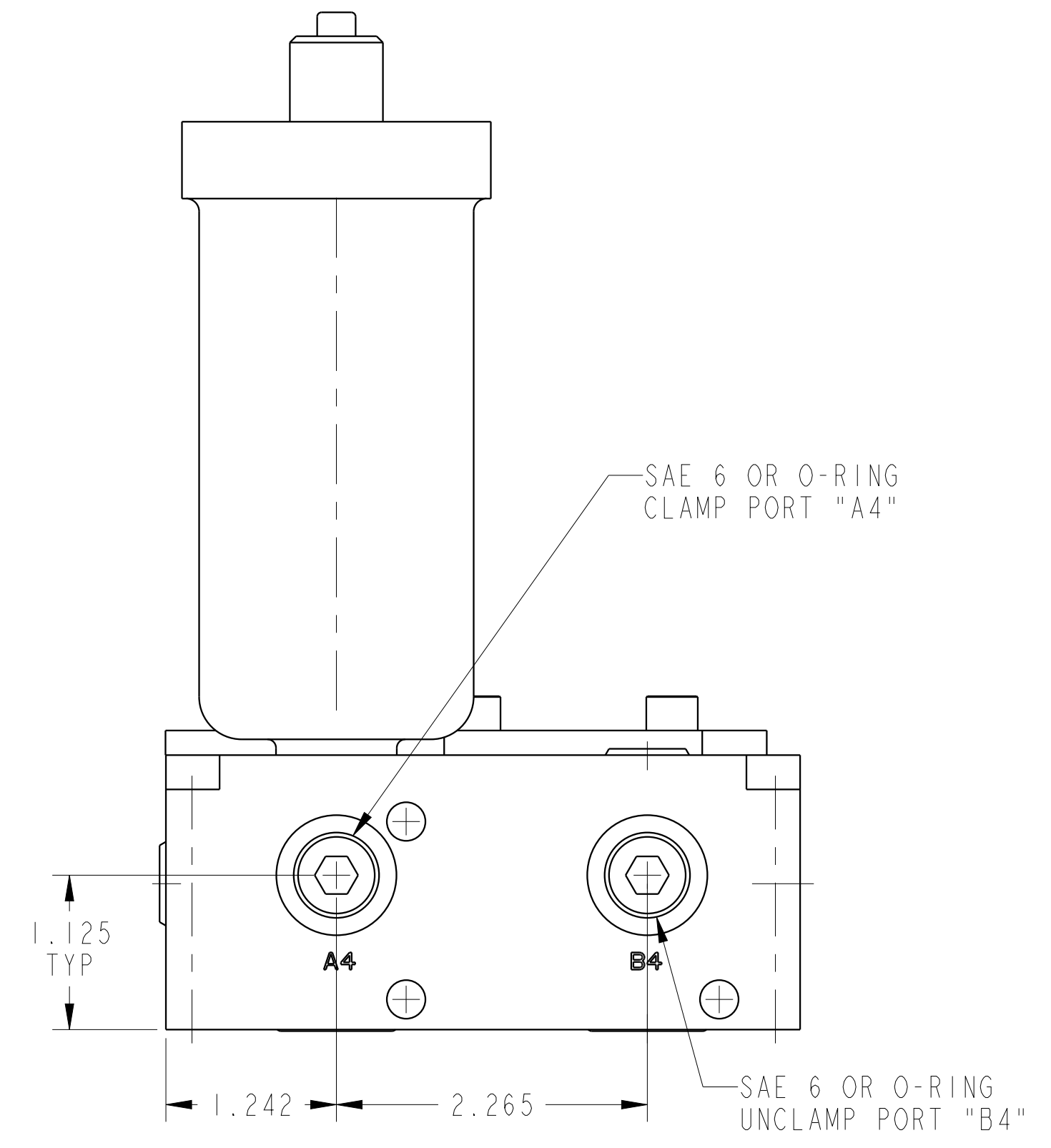
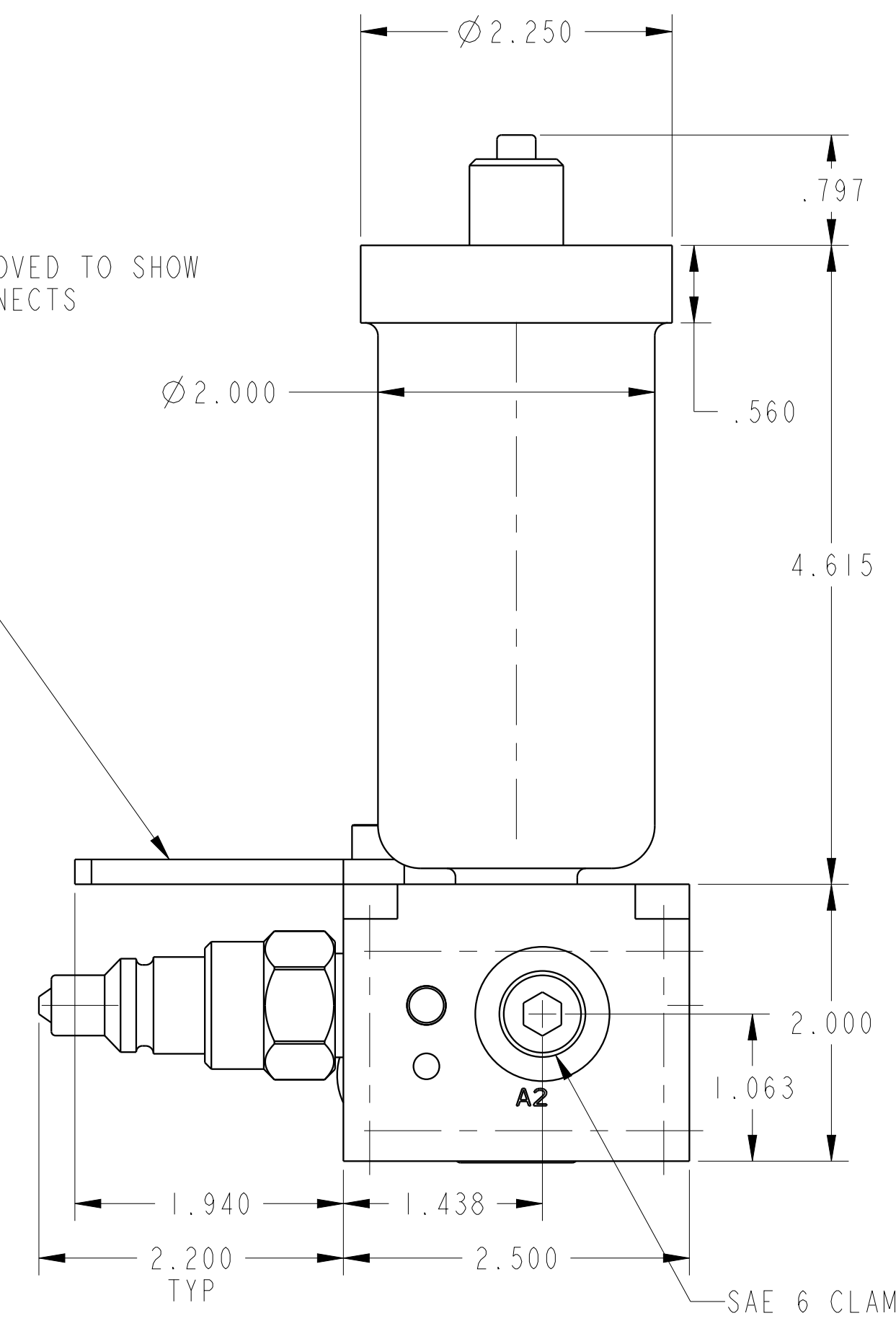
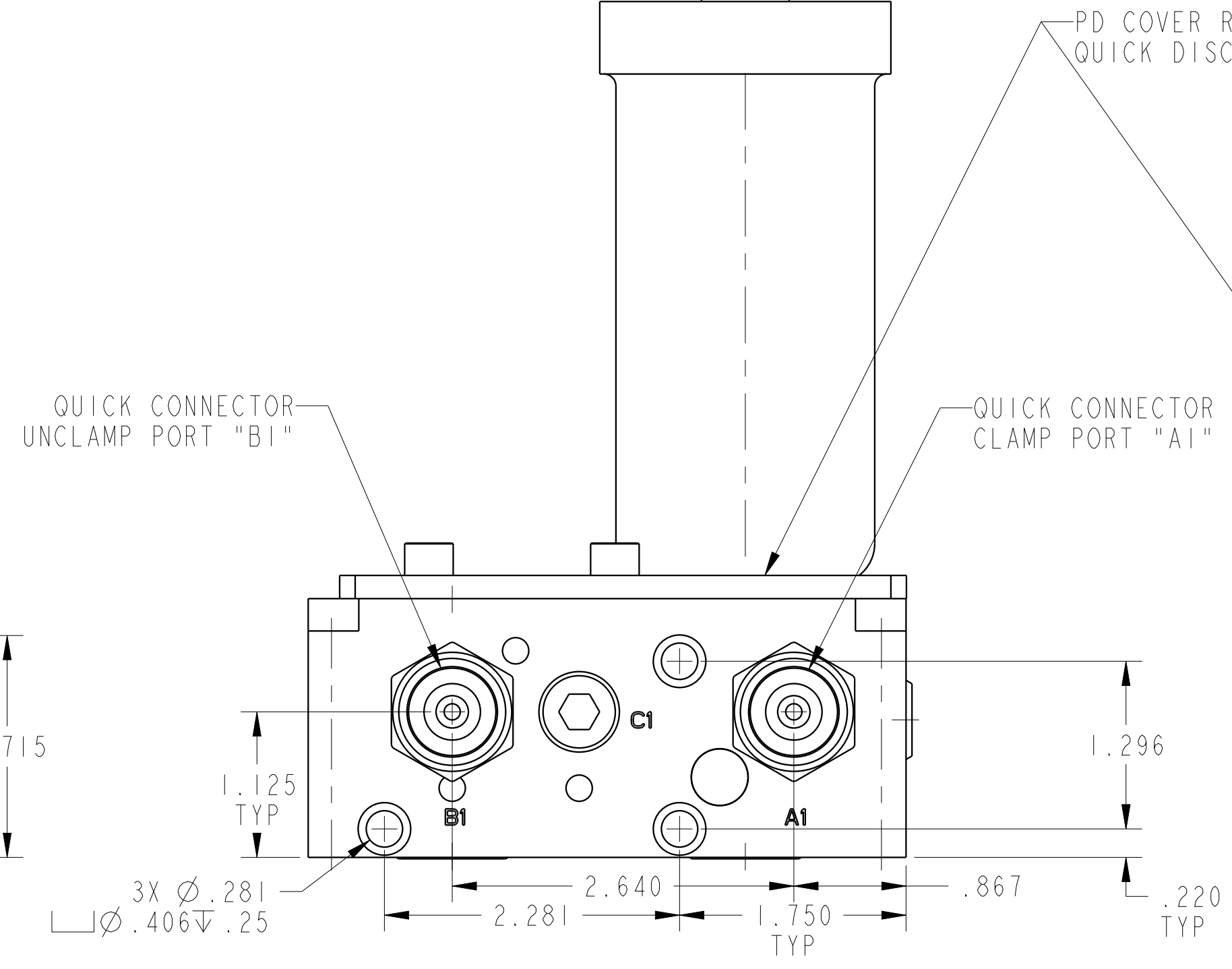
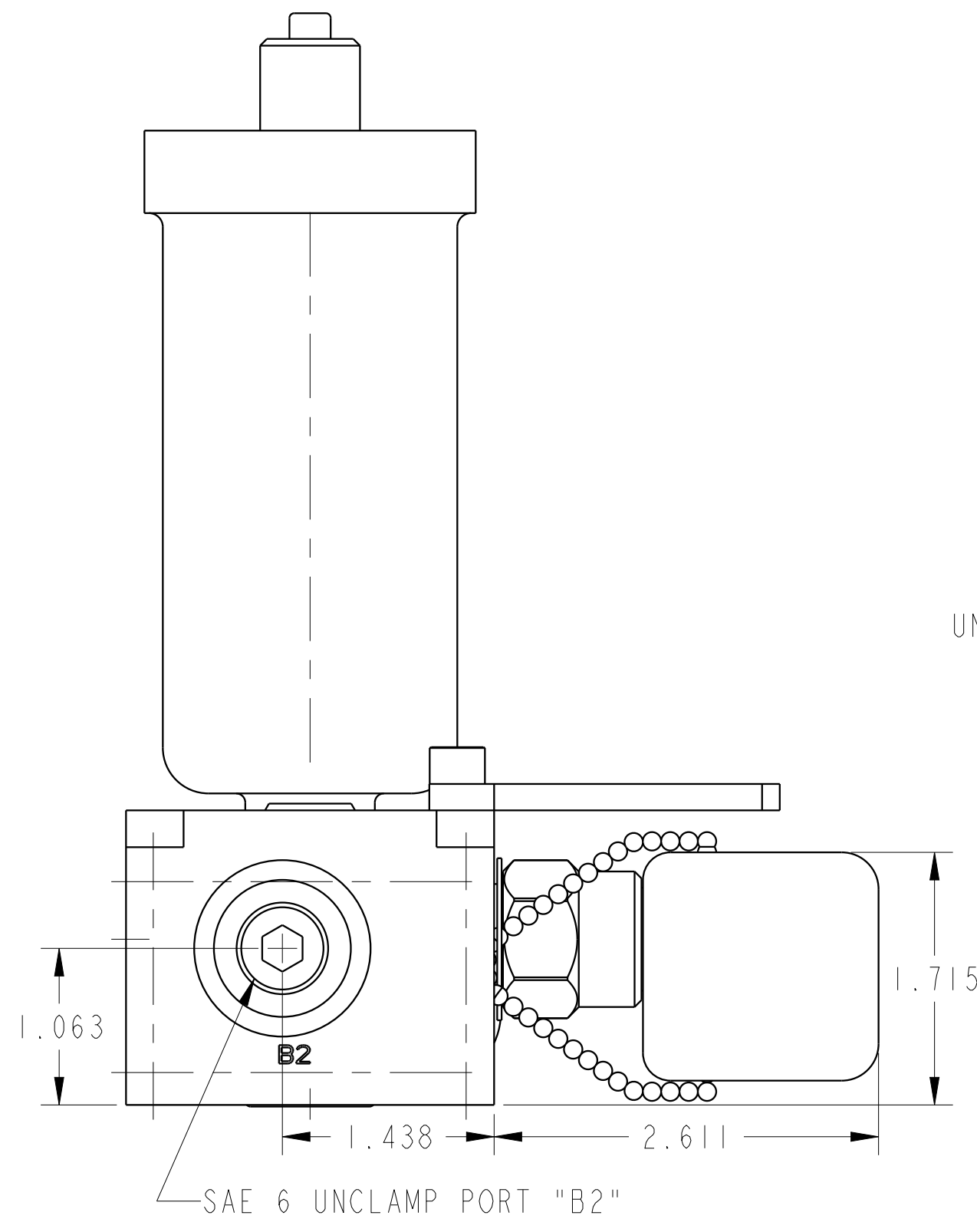
2

3

4



SCALE 0.500  
 ILC56000520 REV C ECN4131



<b>CAD CONTROL DRAWING</b>			
		VEKTEK, INC. 1334 E. SIXTH AVE. P.O. BOX 625 EMPORIA, KS. 66801 U.S.A.	

C	4131	RELEASE	NPETERS	3/17/20	56000520	E	PD, 2H, DUAL, 5000, EXT ACC
REV	IN ACCORDANCE WITH ECN	EFFECTIVE DATE	REVISED BY	DATE	REFERENCE MODEL	REF REV	*****
DRW BY:	DRAWING STATUS: <b>Released</b>				TOLERANCES DO NOT APPLY		SIZE
DATE:	PRODUCTION APPROVED FOR RELEASED STATUS ONLY				DIMENSIONS ARE NOMINAL		D
							ILC56000520
							REV C

2

3

4